

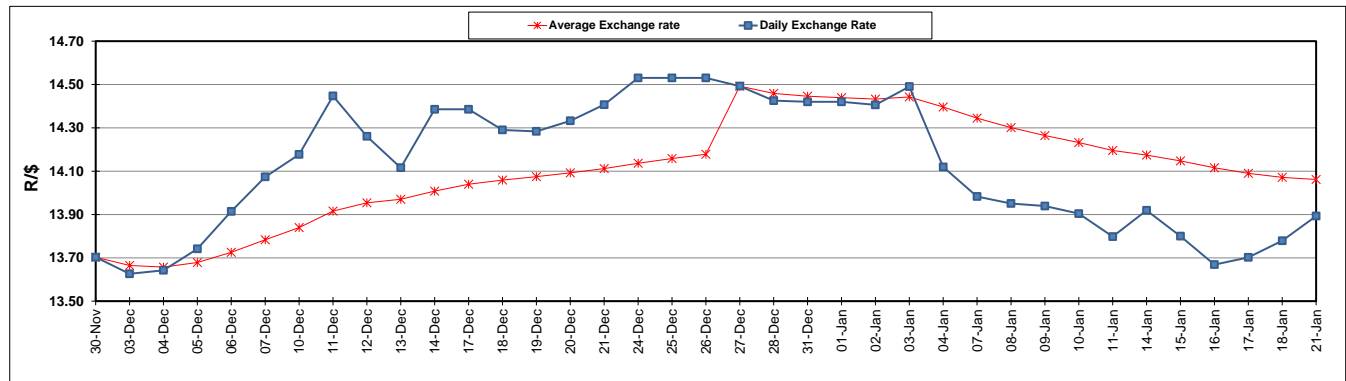
	PETROL 95 ULP	PETROL 93 ULP & LRP	DIESEL 0.05%	DIESEL 0.005%	ILL. PAR.
GAUTENG PUMP PRICE (SA c/l) AS FROM 02/01/2019	1 401.000	1 379.000	-	-	-
WHOLESALE PRICE (SA c/l) AS FROM 02/01/2019	-	-	1 313.420	1 316.820	828.678
SINGLE NATIONAL MAXIMUM RETAIL PRICE	-	-	-	-	1 067.000
BASIC FUEL PRICE - 21/01/2019 (SA c/l)	584.858	573.672	687.016	691.843	687.364
PRESS RELEASE CONTRIBUTION TO BFP 02/01/2018 - 21/01/2019 (SA c/l)	536.470	524.470	635.630	639.030	651.128
UNIT OVER/(UNDER) RECOVERY - 21/01/2019 (SA c/l)	(48.388)	(49.202)	(51.386)	(52.813)	(36.236)
AVERAGE BASIC FUEL PRICE 27/12/2018 - 21/01/2019	560.047	548.230	649.520	653.825	661.094
AVERAGE UNIT OVER/(UNDER) RECOVERY 27/12/2018 - 21/01/2019	(1.115)	(1.520)	15.443	14.982	17.368

### ANALYSIS MOVEMENT OF AVERAGE OVER/(UNDER) RECOVERY

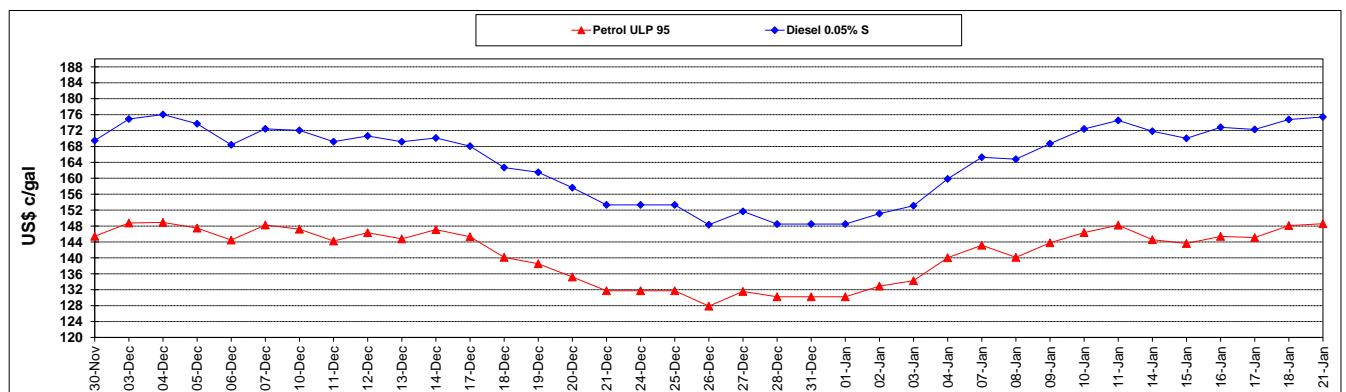
	PETROL 95	PETROL 93	DIESEL 0.05%	DIESEL 0.005%	ILL. PAR.
- MOVEMENT IN INTERNATIONAL PRODUCT PRICES	(5.739)	(6.046)	10.080	9.585	11.909
- MOVEMENT IN EXCHANGE RATE	4.624	4.526	5.363	5.398	5.458
AVERAGE UNIT OVER/(UNDER) RECOVERY 27/12/2018 - 21/01/2019	(1.115)	(1.520)	15.443	14.982	17.368

**R/\$ EXCHANGE RATE - (R/\$13.8930 - 21/01/2019)**

### EXCHANGE RATE USED IN BASIC FUEL PRICE



### INTERNATIONAL PRODUCT PRICES OF BASKET USED IN BASIC FUEL PRICE



### BASIC FUEL PRICE IN SA CENTS PER LITRE

