

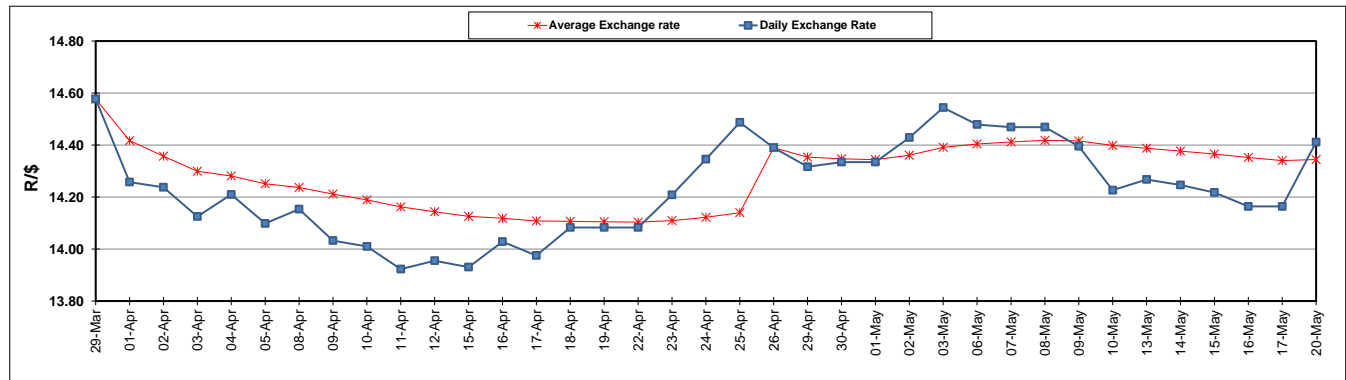
	PETROL 95 ULP	PETROL 93 ULP & LRP	DIESEL 0.05%	DIESEL 0.005%	ILL. PAR.
GAUTENG PUMP PRICE (SA c/l) AS FROM 01/05/2019	1 667.000	1 648.000	-	-	-
WHOLESALE PRICE (SA c/l) AS FROM 01/05/2019	-	-	1 488.120	1 494.520	965.678
SINGLE NATIONAL MAXIMUM RETAIL PRICE	-	-	-	-	1 231.000
BASIC FUEL PRICE - 20/05/2019 (SA c/l)	784.369	773.437	816.510	824.370	815.466
PRESS RELEASE CONTRIBUTION TO BFP 01/05/2019 - 20/05/2019 (SA c/l)	777.170	768.170	784.630	791.030	781.128
UNIT OVER/(UNDER) RECOVERY - 20/05/2019 (SA c/l)	(7.199)	(5.267)	(31.880)	(33.340)	(34.338)
AVERAGE BASIC FUEL PRICE 26/04/2019 - 20/05/2019	761.231	750.204	798.409	805.429	792.950
AVERAGE UNIT OVER/(UNDER) RECOVERY 26/04/2019 - 20/05/2019	6.409	8.437	(13.955)	(14.399)	(12.351)

### ANALYSIS MOVEMENT OF AVERAGE OVER/(UNDER) RECOVERY

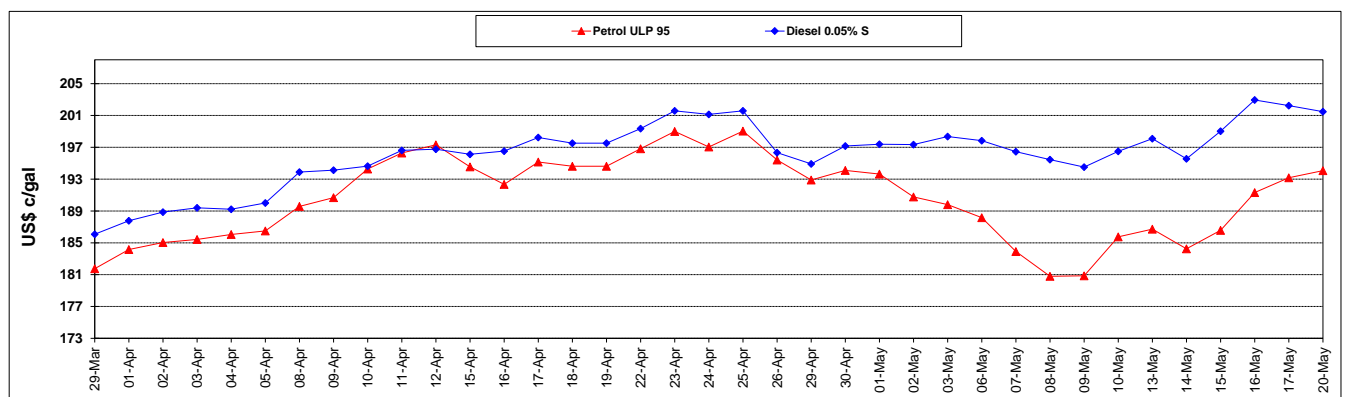
	PETROL 95	PETROL 93	DIESEL 0.05%	DIESEL 0.005%	ILL. PAR.
- MOVEMENT IN INTERNATIONAL PRODUCT PRICES	17.257	19.127	(2.578)	(2.922)	(1.052)
- MOVEMENT IN EXCHANGE RATE	(10.847)	(10.690)	(11.377)	(11.477)	(11.299)
AVERAGE UNIT OVER/(UNDER) RECOVERY 26/04/2019 - 20/05/2019	6.409	8.437	(13.955)	(14.399)	(12.351)

**R/\$ EXCHANGE RATE - (R/\$14.4113 - 20/05/2019)**

### EXCHANGE RATE USED IN BASIC FUEL PRICE



### INTERNATIONAL PRODUCT PRICES OF BASKET USED IN BASIC FUEL PRICE



### BASIC FUEL PRICE IN SA CENTS PER LITRE

