

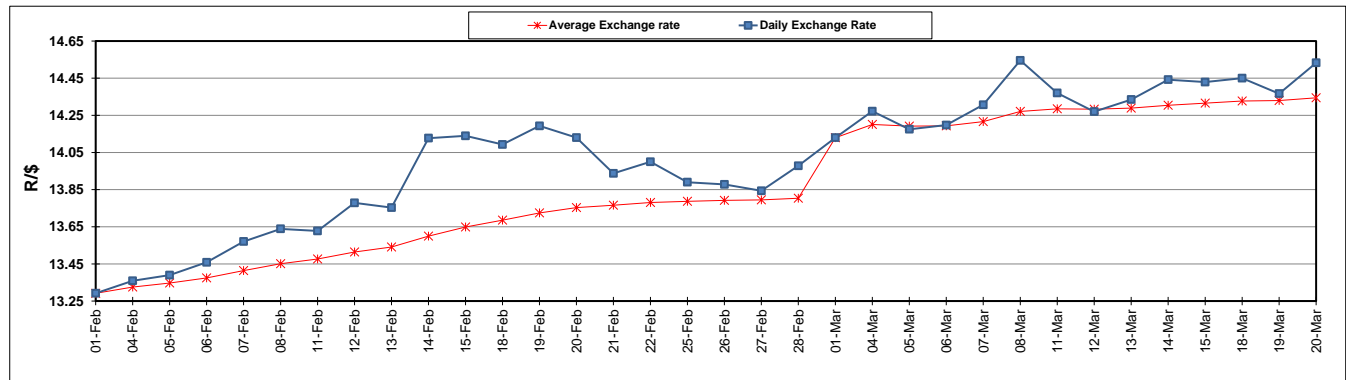
	PETROL 95 ULP	PETROL 93 ULP & LRP	DIESEL 0.05%	DIESEL 0.005%	ILL. PAR.
GAUTENG PUMP PRICE (SA c/l) AS FROM 06/03/2019	1 482.000	1 460.000	-	-	-
WHOLESALE PRICE (SA c/l) AS FROM 06/03/2019	-	-	1 405.420	1 411.820	899.678
SINGLE NATIONAL MAXIMUM RETAIL PRICE	-	-	-	-	1 162.000
BASIC FUEL PRICE - 20/03/2019 (SA c/l)	738.120	729.048	784.189	791.426	783.502
PRESS RELEASE CONTRIBUTION TO BFP 06/03/2019 - 20/03/2019 (SA c/l)	617.470	605.470	727.630	734.030	722.128
UNIT OVER/(UNDER) RECOVERY - 20/03/2019 (SA c/l)	(120.650)	(123.578)	(56.559)	(57.396)	(61.374)
AVERAGE BASIC FUEL PRICE 01/03/2019 - 20/03/2019	700.747	690.687	769.964	777.434	764.890
AVERAGE UNIT OVER/(UNDER) RECOVERY 01/03/2019 - 20/03/2019	(99.134)	(101.074)	(61.834)	(63.333)	(59.048)

ANALYSIS MOVEMENT OF AVERAGE OVER/(UNDER) RECOVERY

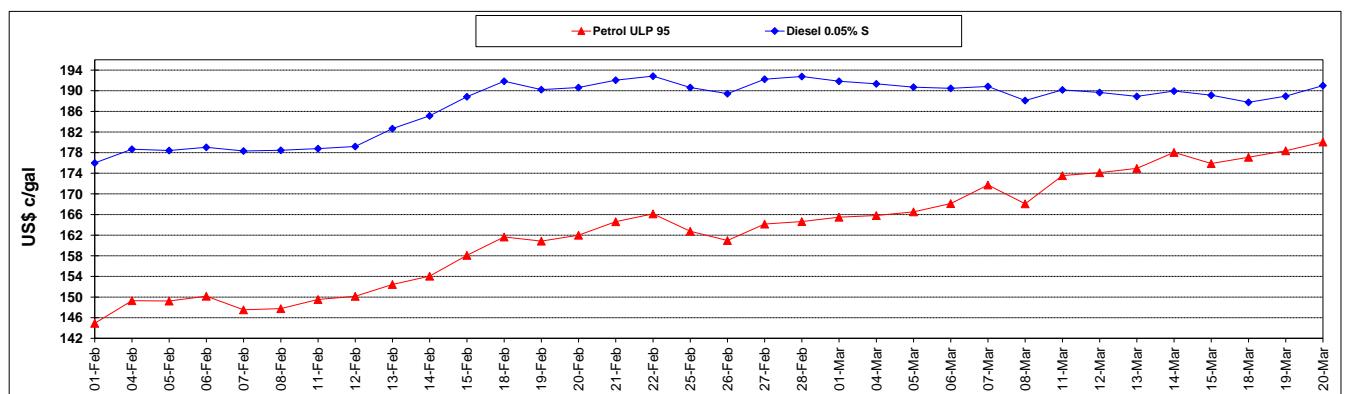
	PETROL 95	PETROL 93	DIESEL 0.05%	DIESEL 0.005%	ILL. PAR.
- MOVEMENT IN INTERNATIONAL PRODUCT PRICES	(72.725)	(75.044)	(32.816)	(34.034)	(30.221)
- MOVEMENT IN EXCHANGE RATE	(26.409)	(26.030)	(29.018)	(29.299)	(28.827)
AVERAGE UNIT OVER/(UNDER) RECOVERY 01/03/2019 - 20/03/2019	(99.134)	(101.074)	(61.834)	(63.333)	(59.048)

R/\$ EXCHANGE RATE - (R/\$14.5328 - 20/03/2019)

EXCHANGE RATE USED IN BASIC FUEL PRICE



INTERNATIONAL PRODUCT PRICES OF BASKET USED IN BASIC FUEL PRICE



BASIC FUEL PRICE IN SA CENTS PER LITRE

