

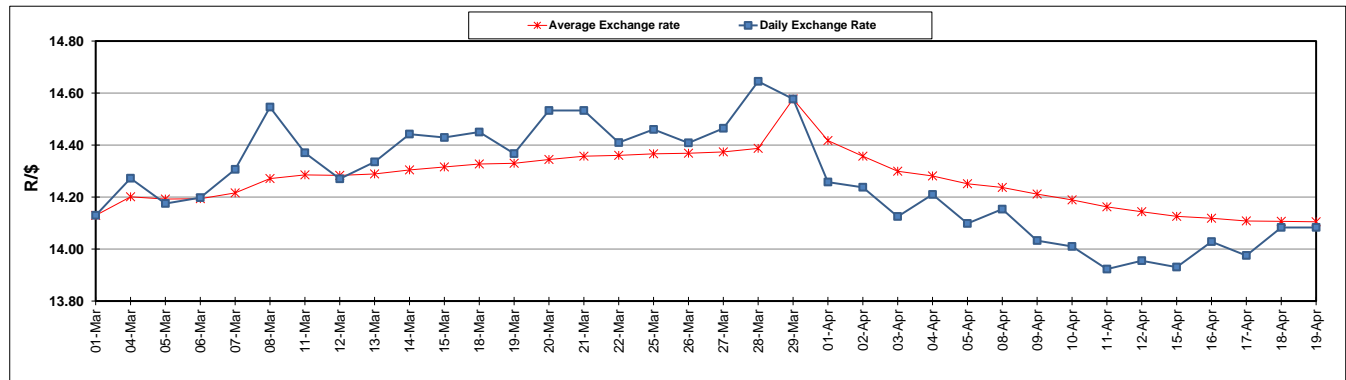
	PETROL 95 ULP	PETROL 93 ULP & LRP	DIESEL 0.05%	DIESEL 0.005%	ILL. PAR.
GAUTENG PUMP PRICE (SA c/l) AS FROM 03/04/2019	1 613.000	1 594.000	-	-	-
WHOLESALE PRICE (SA c/l) AS FROM 03/04/2019	-	-	1 487.120	1 494.520	962.678
SINGLE NATIONAL MAXIMUM RETAIL PRICE	-	-	-	-	1 227.000
BASIC FUEL PRICE - 19/04/2019 (SA c/l)	768.548	755.674	783.021	788.498	776.622
PRESS RELEASE CONTRIBUTION TO BFP 03/04/2019 - 19/04/2019 (SA c/l)	723.170	714.170	783.630	791.030	778.128
UNIT OVER/(UNDER) RECOVERY - 19/04/2019 (SA c/l)	(45.378)	(41.504)	0.609	2.532	1.506
AVERAGE BASIC FUEL PRICE 29/03/2019 - 19/04/2019	754.282	743.019	768.463	774.451	765.200
AVERAGE UNIT OVER/(UNDER) RECOVERY 29/03/2019 - 19/04/2019	(50.931)	(49.230)	4.667	5.891	2.428

ANALYSIS MOVEMENT OF AVERAGE OVER/(UNDER) RECOVERY

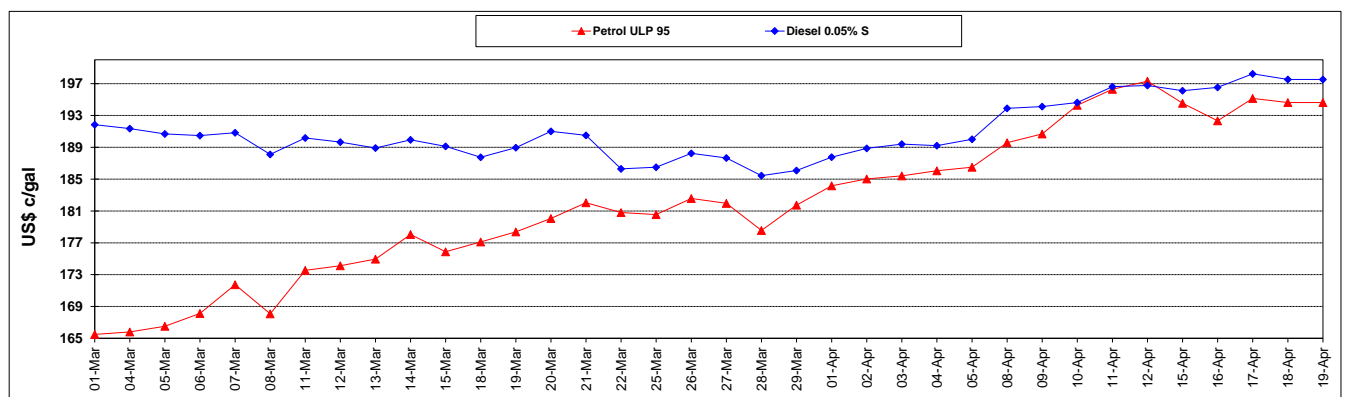
	PETROL 95	PETROL 93	DIESEL 0.05%	DIESEL 0.005%	ILL. PAR.
- MOVEMENT IN INTERNATIONAL PRODUCT PRICES	(66.022)	(64.096)	(10.708)	(9.603)	(12.882)
- MOVEMENT IN EXCHANGE RATE	15.091	14.866	15.375	15.495	15.310
AVERAGE UNIT OVER/(UNDER) RECOVERY 29/03/2019 - 19/04/2019	(50.931)	(49.230)	4.667	5.891	2.428

R/\$ EXCHANGE RATE - (R/\$14.0830 - 19/04/2019)

EXCHANGE RATE USED IN BASIC FUEL PRICE



INTERNATIONAL PRODUCT PRICES OF BASKET USED IN BASIC FUEL PRICE



BASIC FUEL PRICE IN SA CENTS PER LITRE

