

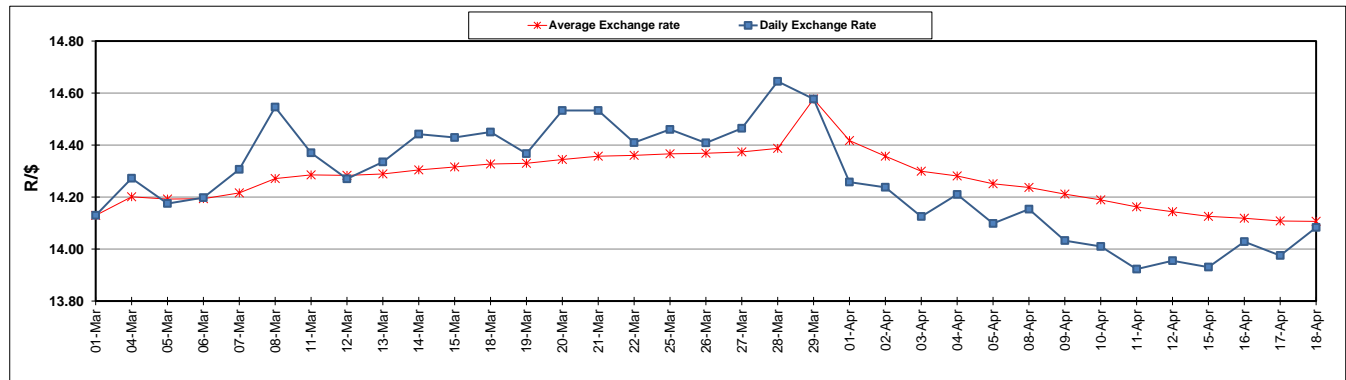
	PETROL 95 ULP	PETROL 93 ULP & LRP	DIESEL 0.05%	DIESEL 0.005%	ILL. PAR.
GAUTENG PUMP PRICE (SA c/l) AS FROM 03/04/2019	1 613.000	1 594.000	-	-	-
WHOLESALE PRICE (SA c/l) AS FROM 03/04/2019	-	-	1 487.120	1 494.520	962.678
SINGLE NATIONAL MAXIMUM RETAIL PRICE	-	-	-	-	1 227.000
BASIC FUEL PRICE - 18/04/2019 (SA c/l)	768.548	755.674	783.021	788.498	776.622
PRESS RELEASE CONTRIBUTION TO BFP 03/04/2019 - 18/04/2019 (SA c/l)	723.170	714.170	783.630	791.030	778.128
UNIT OVER/(UNDER) RECOVERY - 18/04/2019 (SA c/l)	(45.378)	(41.504)	0.609	2.532	1.506
AVERAGE BASIC FUEL PRICE 29/03/2019 - 18/04/2019	753.331	742.175	767.493	773.515	764.438
AVERAGE UNIT OVER/(UNDER) RECOVERY 29/03/2019 - 18/04/2019	(51.301)	(49.745)	4.937	6.115	2.490

### ANALYSIS MOVEMENT OF AVERAGE OVER/(UNDER) RECOVERY

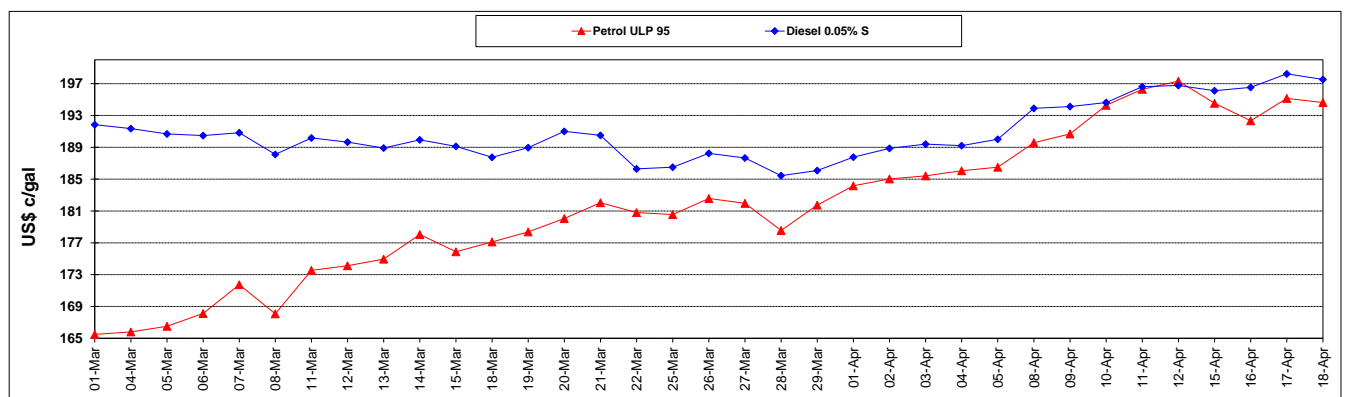
	PETROL 95	PETROL 93	DIESEL 0.05%	DIESEL 0.005%	ILL. PAR.
- MOVEMENT IN INTERNATIONAL PRODUCT PRICES	(66.291)	(64.513)	(10.335)	(9.277)	(12.721)
- MOVEMENT IN EXCHANGE RATE	14.990	14.768	15.272	15.392	15.211
AVERAGE UNIT OVER/(UNDER) RECOVERY 29/03/2019 - 18/04/2019	(51.301)	(49.745)	4.937	6.115	2.490

### R/\$ EXCHANGE RATE - (R/\$14.0830 - 18/04/2019)

#### EXCHANGE RATE USED IN BASIC FUEL PRICE



#### INTERNATIONAL PRODUCT PRICES OF BASKET USED IN BASIC FUEL PRICE



#### BASIC FUEL PRICE IN SA CENTS PER LITRE

