

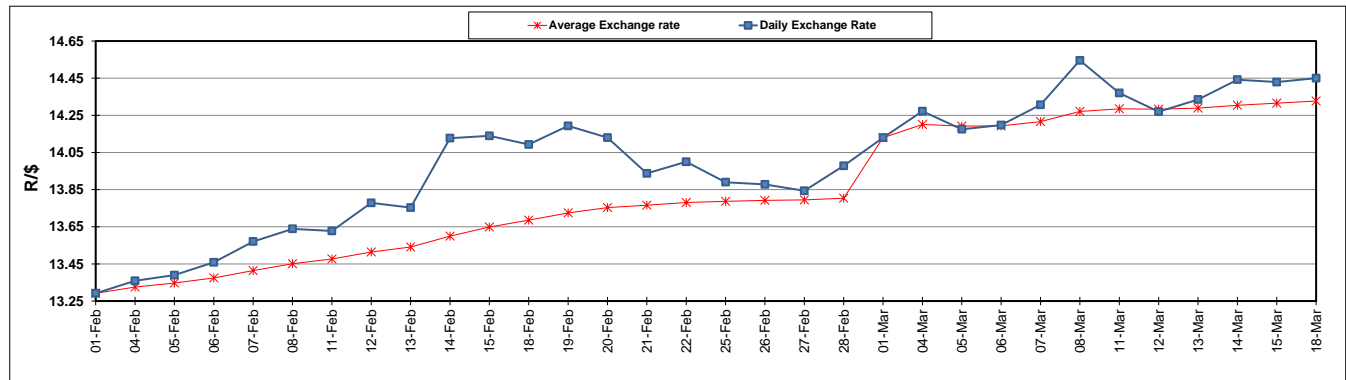
	PETROL 95 ULP	PETROL 93 ULP & LRP	DIESEL 0.05%	DIESEL 0.005%	ILL. PAR.
GAUTENG PUMP PRICE (SA c/l) AS FROM 06/03/2019	1 482.000	1 460.000	-	-	-
WHOLESALE PRICE (SA c/l) AS FROM 06/03/2019	-	-	1 405.420	1 411.820	899.678
SINGLE NATIONAL MAXIMUM RETAIL PRICE	-	-	-	-	1 162.000
BASIC FUEL PRICE - 18/03/2019 (SA c/l)	722.651	712.170	767.274	774.630	765.351
PRESS RELEASE CONTRIBUTION TO BFP 06/03/2019 - 18/03/2019 (SA c/l)	617.470	605.470	727.630	734.030	722.128
UNIT OVER/(UNDER) RECOVERY - 18/03/2019 (SA c/l)	(105.181)	(106.700)	(39.644)	(40.600)	(43.223)
AVERAGE BASIC FUEL PRICE 01/03/2019 - 18/03/2019	695.747	685.635	768.981	776.498	763.304
AVERAGE UNIT OVER/(UNDER) RECOVERY 01/03/2019 - 18/03/2019	(96.777)	(98.665)	(64.101)	(65.718)	(60.176)

### ANALYSIS MOVEMENT OF AVERAGE OVER/(UNDER) RECOVERY

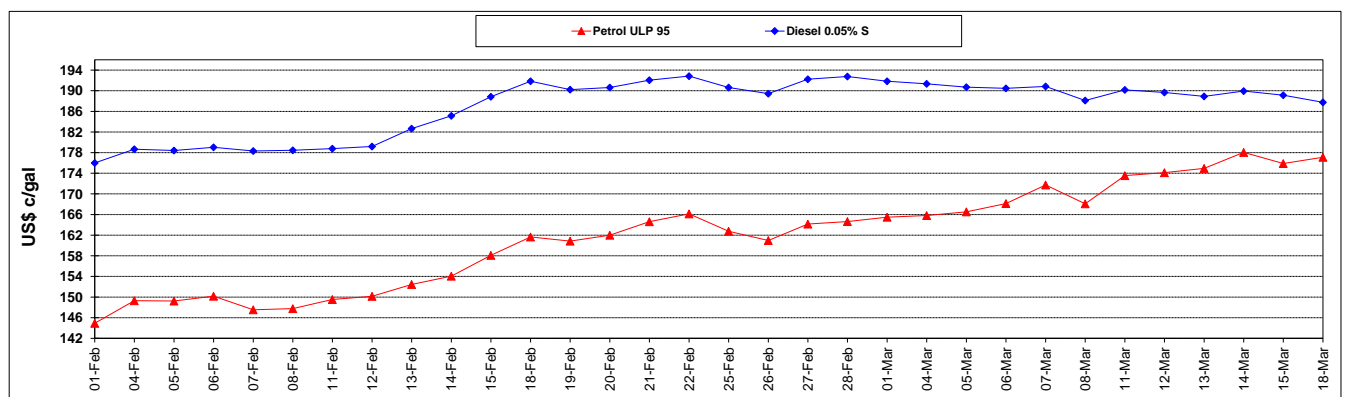
	PETROL 95	PETROL 93	DIESEL 0.05%	DIESEL 0.005%	ILL. PAR.
- MOVEMENT IN INTERNATIONAL PRODUCT PRICES	(71.374)	(73.631)	(36.024)	(37.367)	(32.306)
- MOVEMENT IN EXCHANGE RATE	(25.403)	(25.034)	(28.077)	(28.351)	(27.870)
AVERAGE UNIT OVER/(UNDER) RECOVERY 01/03/2019 - 18/03/2019	(96.777)	(98.665)	(64.101)	(65.718)	(60.176)

**R/\$ EXCHANGE RATE - (R/\$14.4500 - 18/03/2019)**

### EXCHANGE RATE USED IN BASIC FUEL PRICE



### INTERNATIONAL PRODUCT PRICES OF BASKET USED IN BASIC FUEL PRICE



### BASIC FUEL PRICE IN SA CENTS PER LITRE

