

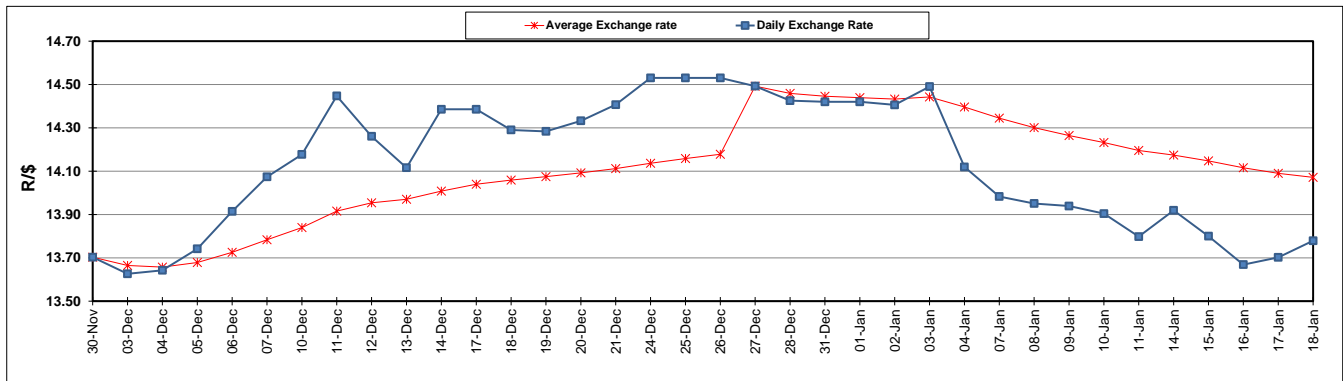
	PETROL 95 ULP	PETROL 93 ULP & LRP	DIESEL 0.05%	DIESEL 0.005%	ILL. PAR.
GAUTENG PUMP PRICE (SA c/l) AS FROM 02/01/2019	1 401.000	1 379.000	-	-	-
WHOLESALE PRICE (SA c/l) AS FROM 02/01/2019	-	-	1 313.420	1 316.820	828.678
SINGLE NATIONAL MAXIMUM RETAIL PRICE	-	-	-	-	1 067.000
BASIC FUEL PRICE - 18/01/2019 (SA c/l)	578.417	568.312	679.195	683.858	681.864
PRESS RELEASE CONTRIBUTION TO BFP 02/01/2018 - 18/01/2019 (SA c/l)	536.470	524.470	635.630	639.030	651.128
UNIT OVER/(UNDER) RECOVERY - 18/01/2019 (SA c/l)	(41.947)	(43.842)	(43.565)	(44.828)	(30.736)
AVERAGE BASIC FUEL PRICE 27/12/2018 - 18/01/2019	558.587	546.734	647.315	651.589	659.548
AVERAGE UNIT OVER/(UNDER) RECOVERY 27/12/2018 - 18/01/2019	1.666	1.285	19.374	18.970	20.521

ANALYSIS MOVEMENT OF AVERAGE OVER/(UNDER) RECOVERY

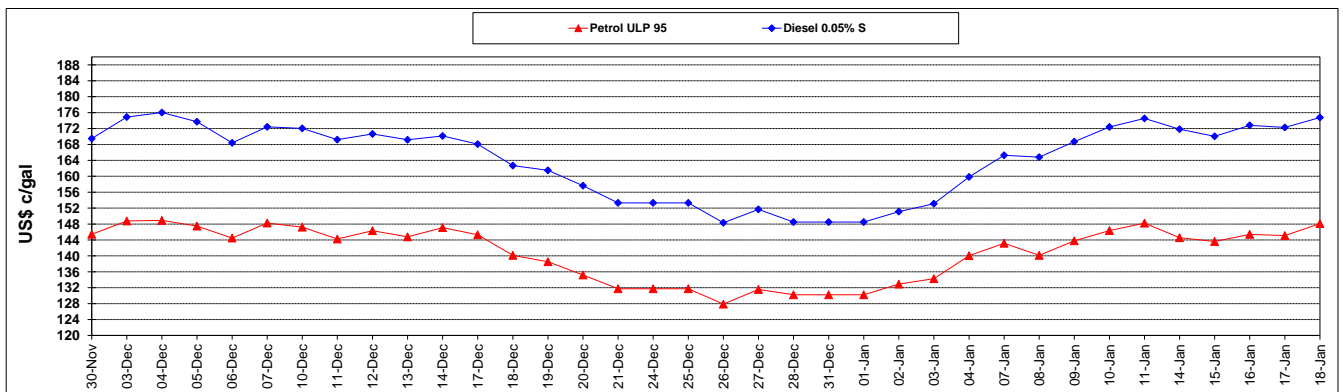
	PETROL 95	PETROL 93	DIESEL 0.05%	DIESEL 0.005%	ILL. PAR.
- MOVEMENT IN INTERNATIONAL PRODUCT PRICES	(2.549)	(2.842)	14.489	14.052	15.543
- MOVEMENT IN EXCHANGE RATE	4.216	4.126	4.885	4.918	4.978
AVERAGE UNIT OVER/(UNDER) RECOVERY 27/12/2018 - 18/01/2019	1.666	1.285	19.374	18.970	20.521

R/\$ EXCHANGE RATE - (R/\$13.7790 - 18/01/2019)

EXCHANGE RATE USED IN BASIC FUEL PRICE



INTERNATIONAL PRODUCT PRICES OF BASKET USED IN BASIC FUEL PRICE



BASIC FUEL PRICE IN SA CENTS PER LITRE

