

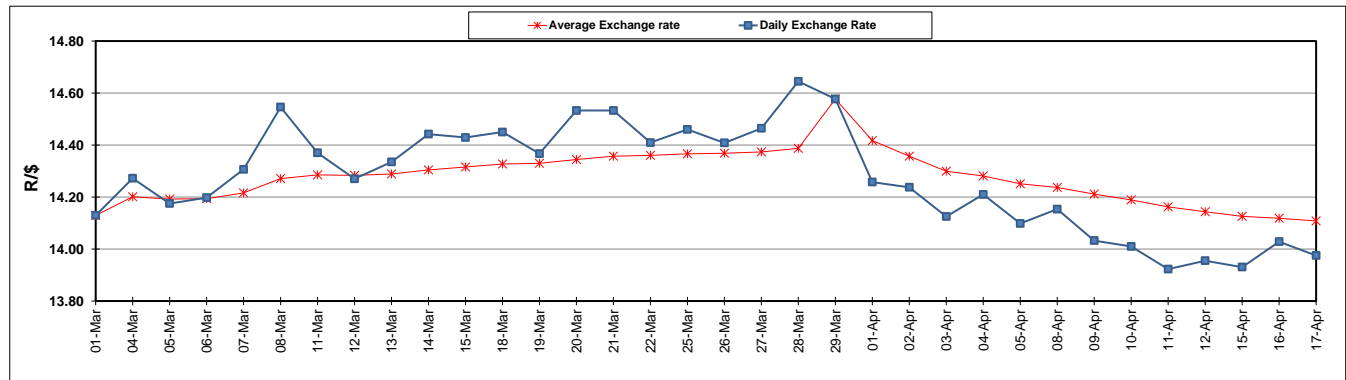
	PETROL 95 ULP	PETROL 93 ULP & LRP	DIESEL 0.05%	DIESEL 0.005%	ILL. PAR.
GAUTENG PUMP PRICE (SA c/l) AS FROM 03/04/2019	1 613.000	1 594.000	-	-	-
WHOLESALE PRICE (SA c/l) AS FROM 03/04/2019	-	-	1 487.120	1 494.520	962.678
SINGLE NATIONAL MAXIMUM RETAIL PRICE	-	-	-	-	1 227.000
BASIC FUEL PRICE - 17/04/2019 (SA c/l)	764.669	752.824	779.722	785.355	772.921
PRESS RELEASE CONTRIBUTION TO BFP 03/04/2019 - 17/04/2019 (SA c/l)	723.170	714.170	783.630	791.030	778.128
UNIT OVER/(UNDER) RECOVERY - 17/04/2019 (SA c/l)	(41.499)	(38.654)	3.908	5.675	5.207
AVERAGE BASIC FUEL PRICE 29/03/2019 - 17/04/2019	752.244	741.211	766.383	772.444	763.568
AVERAGE UNIT OVER/(UNDER) RECOVERY 29/03/2019 - 17/04/2019	(51.724)	(50.333)	5.247	6.371	2.560

ANALYSIS MOVEMENT OF AVERAGE OVER/(UNDER) RECOVERY

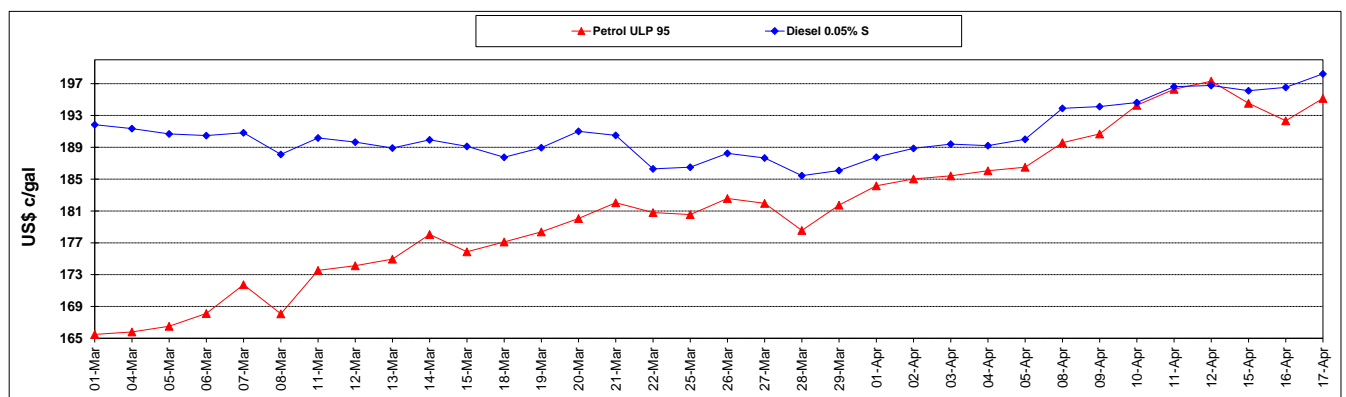
	PETROL 95	PETROL 93	DIESEL 0.05%	DIESEL 0.005%	ILL. PAR.
- MOVEMENT IN INTERNATIONAL PRODUCT PRICES	(66.606)	(64.997)	(9.914)	(8.909)	(12.546)
- MOVEMENT IN EXCHANGE RATE	14.882	14.663	15.161	15.281	15.106
AVERAGE UNIT OVER/(UNDER) RECOVERY 29/03/2019 - 17/04/2019	(51.724)	(50.333)	5.247	6.371	2.560

R/\$ EXCHANGE RATE - (R/\$13.9750 - 17/04/2019)

EXCHANGE RATE USED IN BASIC FUEL PRICE



INTERNATIONAL PRODUCT PRICES OF BASKET USED IN BASIC FUEL PRICE



BASIC FUEL PRICE IN SA CENTS PER LITRE

