

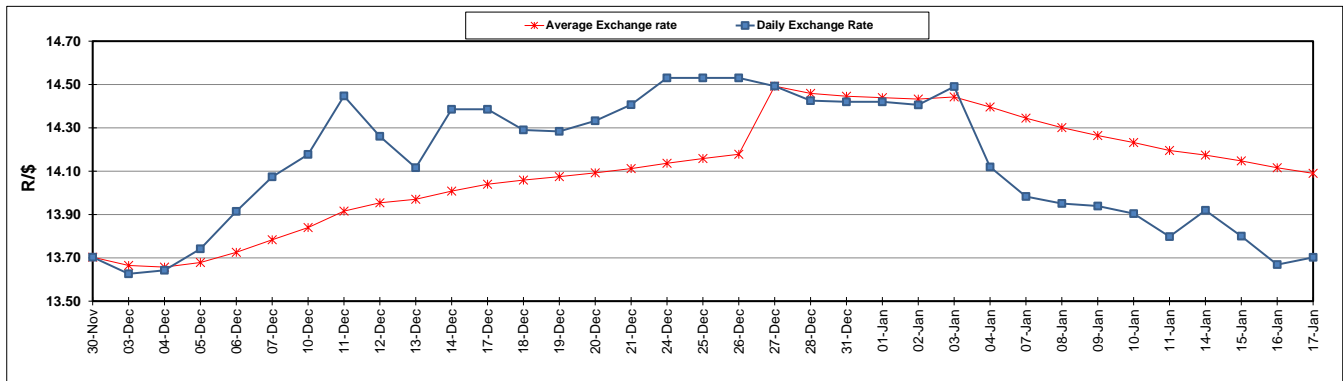
	PETROL 95 ULP	PETROL 93 ULP & LRP	DIESEL 0.05%	DIESEL 0.005%	ILL. PAR.
GAUTENG PUMP PRICE (SA c/l) AS FROM 02/01/2019	1 401.000	1 379.000	-	-	-
WHOLESALE PRICE (SA c/l) AS FROM 02/01/2019	-	-	1 313.420	1 316.820	828.678
SINGLE NATIONAL MAXIMUM RETAIL PRICE	-	-	-	-	1 067.000
BASIC FUEL PRICE - 17/01/2019 (SA c/l)	564.355	553.031	666.257	671.419	668.565
PRESS RELEASE CONTRIBUTION TO BFP 02/01/2018 - 17/01/2019 (SA c/l)	536.470	524.470	635.630	639.030	651.128
UNIT OVER/(UNDER) RECOVERY - 17/01/2019 (SA c/l)	(27.885)	(28.561)	(30.627)	(32.389)	(17.437)
AVERAGE BASIC FUEL PRICE 27/12/2018 - 17/01/2019	557.348	545.385	645.322	649.572	658.154
AVERAGE UNIT OVER/(UNDER) RECOVERY 27/12/2018 - 17/01/2019	4.392	4.105	23.308	22.958	23.724

ANALYSIS MOVEMENT OF AVERAGE OVER/(UNDER) RECOVERY

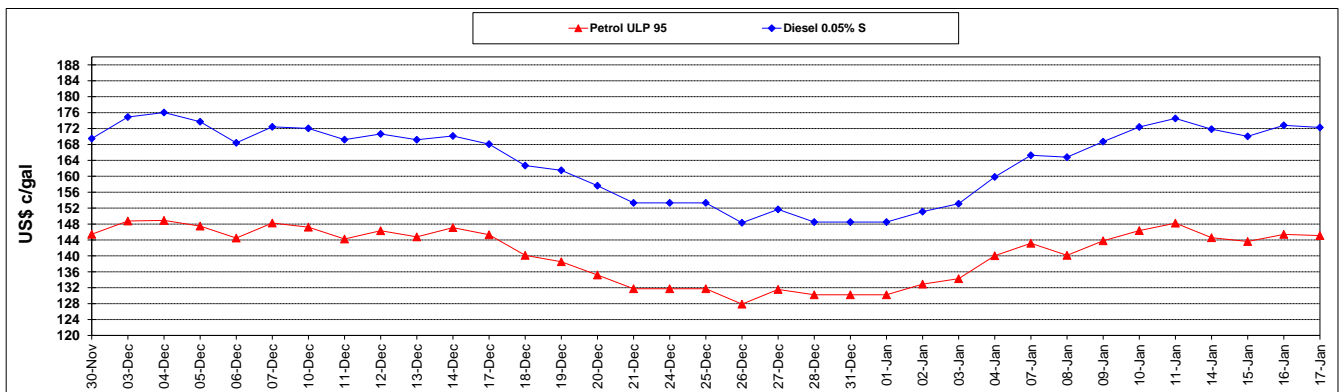
	PETROL 95	PETROL 93	DIESEL 0.05%	DIESEL 0.005%	ILL. PAR.
- MOVEMENT IN INTERNATIONAL PRODUCT PRICES	0.915	0.703	19.282	18.906	19.618
- MOVEMENT IN EXCHANGE RATE	3.477	3.402	4.026	4.052	4.106
AVERAGE UNIT OVER/(UNDER) RECOVERY 27/12/2018 - 17/01/2019	4.392	4.105	23.308	22.958	23.724

R/\$ EXCHANGE RATE - (R/\$13.7020 - 17/01/2019)

EXCHANGE RATE USED IN BASIC FUEL PRICE



INTERNATIONAL PRODUCT PRICES OF BASKET USED IN BASIC FUEL PRICE



BASIC FUEL PRICE IN SA CENTS PER LITRE

