

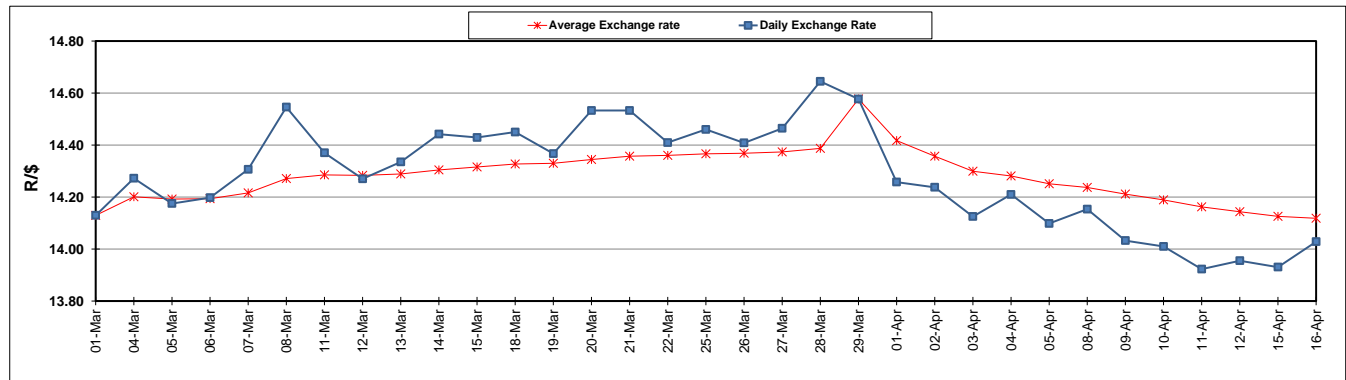
	PETROL 95 ULP	PETROL 93 ULP & LRP	DIESEL 0.05%	DIESEL 0.005%	ILL. PAR.
GAUTENG PUMP PRICE (SA c/l) AS FROM 03/04/2019	1 613.000	1 594.000	-	-	-
WHOLESALE PRICE (SA c/l) AS FROM 03/04/2019	-	-	1 487.120	1 494.520	962.678
SINGLE NATIONAL MAXIMUM RETAIL PRICE	-	-	-	-	1 227.000
BASIC FUEL PRICE - 16/04/2019 (SA c/l)	757.094	743.377	776.286	782.067	768.794
PRESS RELEASE CONTRIBUTION TO BFP 03/04/2019 - 16/04/2019 (SA c/l)	723.170	714.170	783.630	791.030	778.128
UNIT OVER/(UNDER) RECOVERY - 16/04/2019 (SA c/l)	(33.924)	(29.207)	7.344	8.963	9.334
AVERAGE BASIC FUEL PRICE 29/03/2019 - 16/04/2019	751.288	740.317	765.357	771.451	762.849
AVERAGE UNIT OVER/(UNDER) RECOVERY 29/03/2019 - 16/04/2019	(52.510)	(51.232)	5.350	6.425	2.356

ANALYSIS MOVEMENT OF AVERAGE OVER/(UNDER) RECOVERY

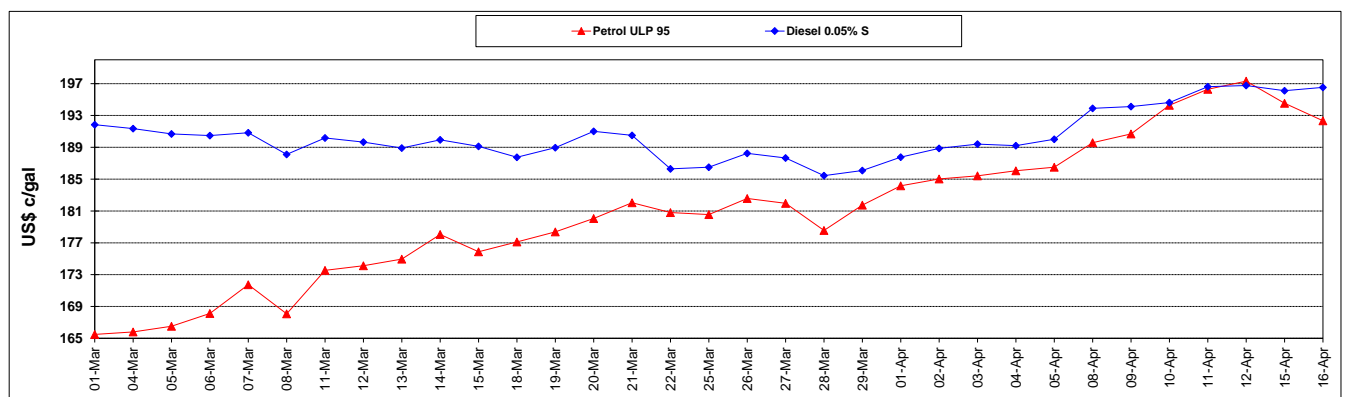
	PETROL 95	PETROL 93	DIESEL 0.05%	DIESEL 0.005%	ILL. PAR.
- MOVEMENT IN INTERNATIONAL PRODUCT PRICES	(66.814)	(65.327)	(9.222)	(8.263)	(12.168)
- MOVEMENT IN EXCHANGE RATE	14.304	14.095	14.572	14.688	14.524
AVERAGE UNIT OVER/(UNDER) RECOVERY 29/03/2019 - 16/04/2019	(52.510)	(51.232)	5.350	6.425	2.356

R/\$ EXCHANGE RATE - (R/\$14.0283 - 16/04/2019)

EXCHANGE RATE USED IN BASIC FUEL PRICE



INTERNATIONAL PRODUCT PRICES OF BASKET USED IN BASIC FUEL PRICE



BASIC FUEL PRICE IN SA CENTS PER LITRE

