

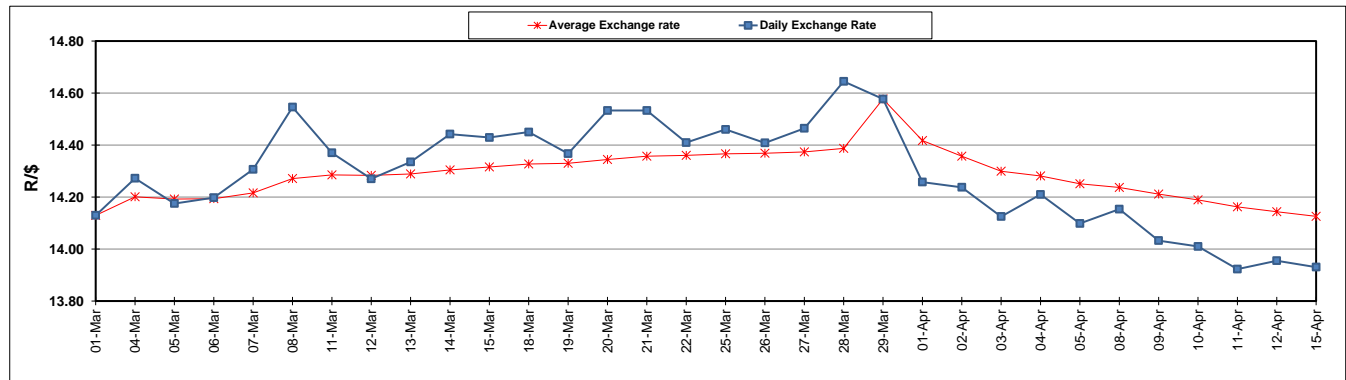
	PETROL 95 ULP	PETROL 93 ULP & LRP	DIESEL 0.05%	DIESEL 0.005%	ILL. PAR.
GAUTENG PUMP PRICE (SA c/l) AS FROM 03/04/2019	1 613.000	1 594.000	-	-	-
WHOLESALE PRICE (SA c/l) AS FROM 03/04/2019	-	-	1 487.120	1 494.520	962.678
SINGLE NATIONAL MAXIMUM RETAIL PRICE	-	-	-	-	1 227.000
BASIC FUEL PRICE - 15/04/2019 (SA c/l)	760.024	746.220	769.414	775.578	762.565
PRESS RELEASE CONTRIBUTION TO BFP 03/04/2019 - 15/04/2019 (SA c/l)	723.170	714.170	783.630	791.030	778.128
UNIT OVER/(UNDER) RECOVERY - 15/04/2019 (SA c/l)	(36.854)	(32.050)	14.216	15.452	15.563
AVERAGE BASIC FUEL PRICE 29/03/2019 - 15/04/2019	750.804	740.062	764.447	770.567	762.353
AVERAGE UNIT OVER/(UNDER) RECOVERY 29/03/2019 - 15/04/2019	(54.059)	(53.067)	5.183	6.213	1.775

ANALYSIS MOVEMENT OF AVERAGE OVER/(UNDER) RECOVERY

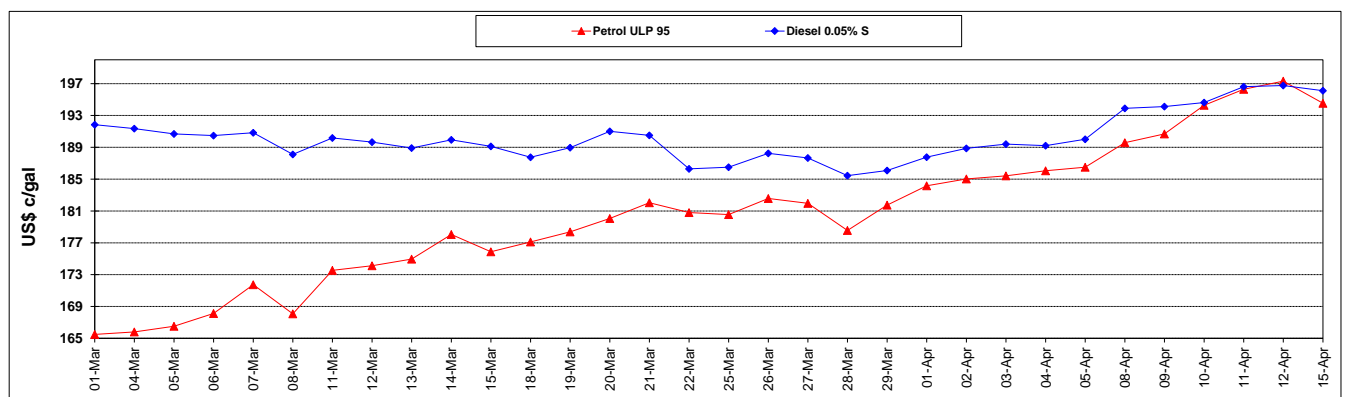
	PETROL 95	PETROL 93	DIESEL 0.05%	DIESEL 0.005%	ILL. PAR.
- MOVEMENT IN INTERNATIONAL PRODUCT PRICES	(67.947)	(66.757)	(8.958)	(8.041)	(12.327)
- MOVEMENT IN EXCHANGE RATE	13.888	13.690	14.141	14.254	14.102
AVERAGE UNIT OVER/(UNDER) RECOVERY 29/03/2019 - 15/04/2019	(54.059)	(53.067)	5.183	6.213	1.775

R/\$ EXCHANGE RATE - (R/\$13.9305 - 15/04/2019)

EXCHANGE RATE USED IN BASIC FUEL PRICE



INTERNATIONAL PRODUCT PRICES OF BASKET USED IN BASIC FUEL PRICE



BASIC FUEL PRICE IN SA CENTS PER LITRE

