

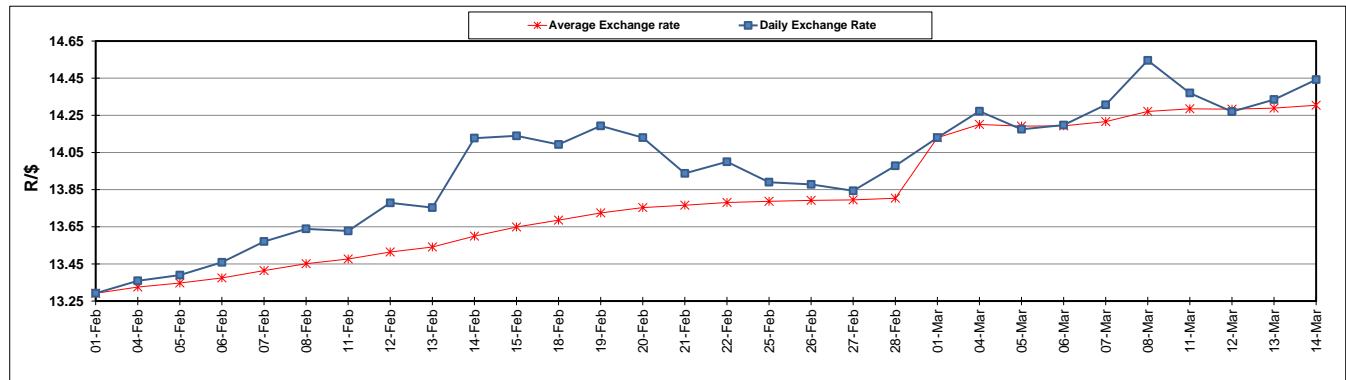
	PETROL 95 ULP	PETROL 93 ULP & LRP	DIESEL 0.05%	DIESEL 0.005%	ILL. PAR.
GAUTENG PUMP PRICE (SA c/l) AS FROM 06/03/2019	1 482.000	1 460.000	-	-	-
WHOLESALE PRICE (SA c/l) AS FROM 06/03/2019	-	-	1 405.420	1 411.820	899.678
SINGLE NATIONAL MAXIMUM RETAIL PRICE	-	-	-	-	1 162.000
BASIC FUEL PRICE - 14/03/2019 (SA c/l)	725.859	716.114	775.228	782.494	775.772
PRESS RELEASE CONTRIBUTION TO BFP 06/03/2019 - 14/03/2019 (SA c/l)	617.470	605.470	727.630	734.030	722.128
UNIT OVER/(UNDER) RECOVERY - 14/03/2019 (SA c/l)	(108.389)	(110.644)	(47.598)	(48.464)	(53.644)
AVERAGE BASIC FUEL PRICE 01/03/2019 - 14/03/2019	690.944	680.905	768.906	776.485	762.395
AVERAGE UNIT OVER/(UNDER) RECOVERY 01/03/2019 - 14/03/2019	(95.674)	(97.635)	(68.576)	(70.355)	(63.067)

ANALYSIS MOVEMENT OF AVERAGE OVER/(UNDER) RECOVERY

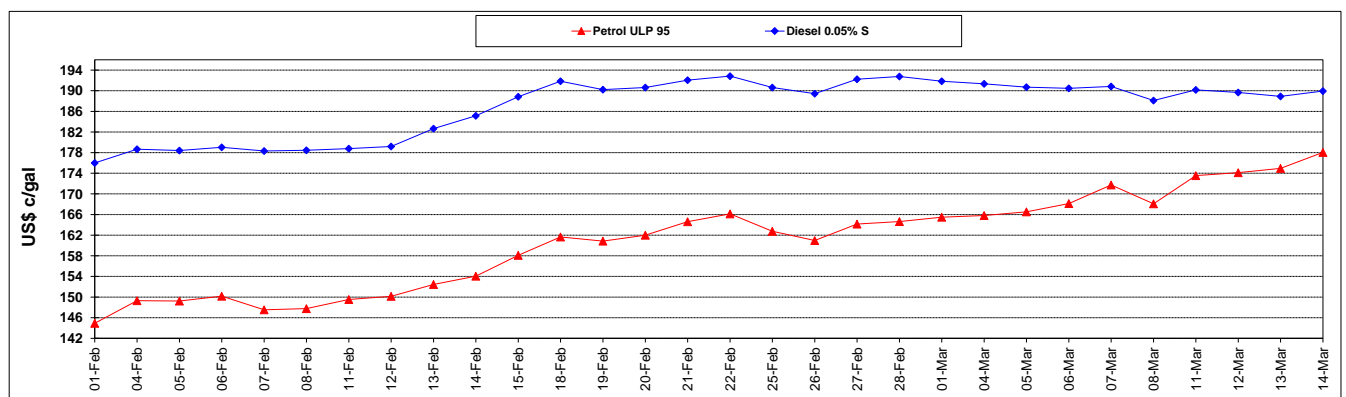
	PETROL 95	PETROL 93	DIESEL 0.05%	DIESEL 0.005%	ILL. PAR.
- MOVEMENT IN INTERNATIONAL PRODUCT PRICES	(71.498)	(73.810)	(41.672)	(43.186)	(36.391)
- MOVEMENT IN EXCHANGE RATE	(24.176)	(23.825)	(26.904)	(27.169)	(26.676)
AVERAGE UNIT OVER/(UNDER) RECOVERY 01/03/2019 - 14/03/2019	(95.674)	(97.635)	(68.576)	(70.355)	(63.067)

R/\$ EXCHANGE RATE - (R/\$14.4420 - 14/03/2019)

EXCHANGE RATE USED IN BASIC FUEL PRICE



INTERNATIONAL PRODUCT PRICES OF BASKET USED IN BASIC FUEL PRICE



BASIC FUEL PRICE IN SA CENTS PER LITRE

