

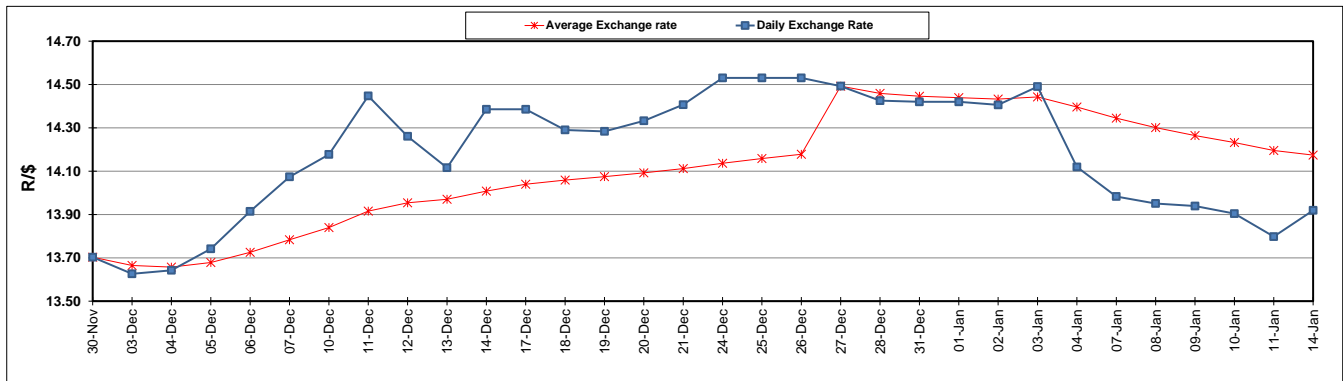
	PETROL 95 ULP	PETROL 93 ULP & LRP	DIESEL 0.05%	DIESEL 0.005%	ILL. PAR.
GAUTENG PUMP PRICE (SA c/l) AS FROM 02/01/2019	1 401.000	1 379.000	-	-	-
WHOLESALE PRICE (SA c/l) AS FROM 02/01/2019	-	-	1 313.420	1 316.820	828.678
SINGLE NATIONAL MAXIMUM RETAIL PRICE	-	-	-	-	1 067.000
BASIC FUEL PRICE - 14/01/2019 (SA c/l)	571.158	561.303	675.042	679.217	682.574
PRESS RELEASE CONTRIBUTION TO BFP 02/01/2018 - 14/01/2019 (SA c/l)	536.470	524.470	635.630	638.030	651.128
UNIT OVER/(UNDER) RECOVERY - 14/01/2019 (SA c/l)	(34.688)	(36.833)	(39.412)	(41.187)	(31.446)
AVERAGE BASIC FUEL PRICE 27/12/2018 - 14/01/2019	555.871	543.657	640.722	644.831	655.826
AVERAGE UNIT OVER/(UNDER) RECOVERY 27/12/2018 - 14/01/2019	11.701	11.607	35.523	34.737	33.148

ANALYSIS MOVEMENT OF AVERAGE OVER/(UNDER) RECOVERY

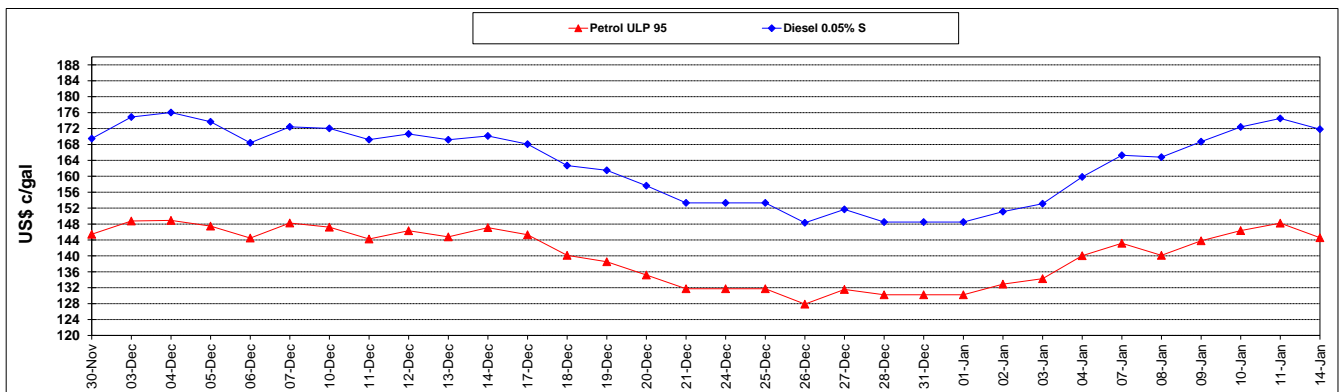
	PETROL 95	PETROL 93	DIESEL 0.05%	DIESEL 0.005%	ILL. PAR.
- MOVEMENT IN INTERNATIONAL PRODUCT PRICES	11.568	11.477	35.369	34.582	32.991
- MOVEMENT IN EXCHANGE RATE	0.133	0.130	0.154	0.155	0.157
AVERAGE UNIT OVER/(UNDER) RECOVERY 27/12/2018 - 14/01/2019	11.701	11.607	35.523	34.737	33.148

R/\$ EXCHANGE RATE - (R/\$13.9190 - 14/01/2019)

EXCHANGE RATE USED IN BASIC FUEL PRICE



INTERNATIONAL PRODUCT PRICES OF BASKET USED IN BASIC FUEL PRICE



BASIC FUEL PRICE IN SA CENTS PER LITRE

