

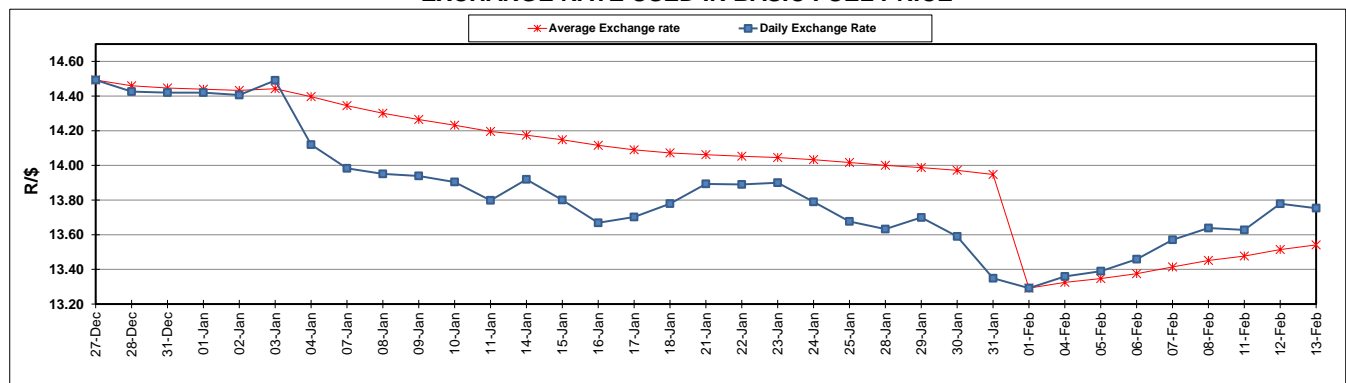
	PETROL 95 ULP	PETROL 93 ULP & LRP	DIESEL 0.05%	DIESEL 0.005%	ILL. PAR.
GAUTENG PUMP PRICE (SA c/l) AS FROM 06/02/2019	1 408.000	1 386.000	-	-	-
WHOLESALE PRICE (SA c/l) AS FROM 06/02/2019	-	-	1 314.420	1 318.820	823.678
SINGLE NATIONAL MAXIMUM RETAIL PRICE	-	-	-	-	1 060.000
BASIC FUEL PRICE - 13/02/2019 (SA c/l)	600.979	590.599	715.168	721.088	710.825
PRESS RELEASE CONTRIBUTION TO BFP 06/02/2019 - 13/02/2019 (SA c/l)	543.470	531.470	636.630	641.030	646.128
UNIT OVER/(UNDER) RECOVERY - 13/02/2019 (SA c/l)	(57.509)	(59.129)	(78.538)	(80.058)	(64.697)
AVERAGE BASIC FUEL PRICE 01/02/2019 - 13/02/2019	579.519	567.768	690.541	696.422	689.449
AVERAGE UNIT OVER/(UNDER) RECOVERY 01/02/2019 - 13/02/2019	(38.382)	(38.631)	(54.245)	(56.059)	(41.655)

ANALYSIS MOVEMENT OF AVERAGE OVER/(UNDER) RECOVERY

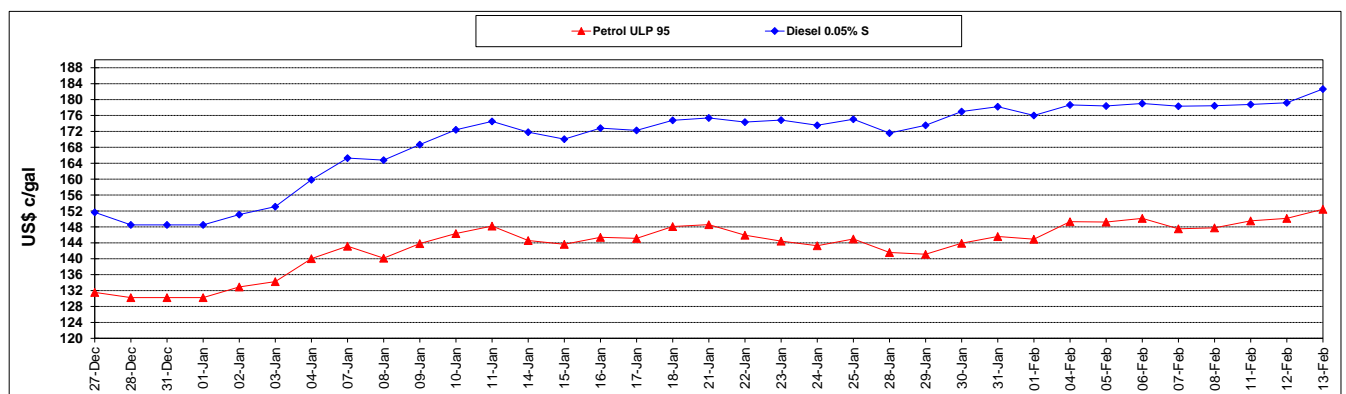
	PETROL 95	PETROL 93	DIESEL 0.05%	DIESEL 0.005%	ILL. PAR.
- MOVEMENT IN INTERNATIONAL PRODUCT PRICES	(56.815)	(56.690)	(76.208)	(78.210)	(63.584)
- MOVEMENT IN EXCHANGE RATE	18.433	18.059	21.964	22.151	21.930
AVERAGE UNIT OVER/(UNDER) RECOVERY 01/02/2019 - 13/02/2019	(38.382)	(38.631)	(54.245)	(56.059)	(41.655)

R/\$ EXCHANGE RATE - (R/\$13.7530 - 13/02/2019)

EXCHANGE RATE USED IN BASIC FUEL PRICE



INTERNATIONAL PRODUCT PRICES OF BASKET USED IN BASIC FUEL PRICE



BASIC FUEL PRICE IN SA CENTS PER LITRE

