

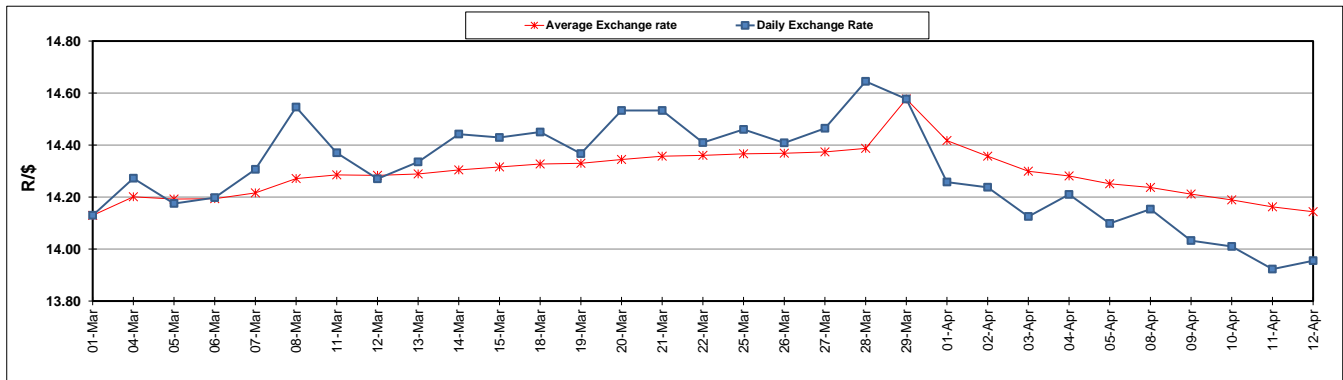
	PETROL 95 ULP	PETROL 93 ULP & LRP	DIESEL 0.05%	DIESEL 0.005%	ILL. PAR.
GAUTENG PUMP PRICE (SA c/l) AS FROM 03/04/2019	1 613.000	1 594.000	-	-	-
WHOLESALE PRICE (SA c/l) AS FROM 03/04/2019	-	-	1 487.120	1 494.520	962.678
SINGLE NATIONAL MAXIMUM RETAIL PRICE	-	-	-	-	1 227.000
BASIC FUEL PRICE - 12/04/2019 (SA c/l)	771.608	758.258	773.148	779.182	767.583
PRESS RELEASE CONTRIBUTION TO BFP 03/04/2019 - 12/04/2019 (SA c/l)	723.170	714.170	783.630	791.030	778.128
UNIT OVER/(UNDER) RECOVERY - 12/04/2019 (SA c/l)	(48.438)	(44.088)	10.482	11.848	10.545
AVERAGE BASIC FUEL PRICE 29/03/2019 - 12/04/2019	749.966	739.502	763.995	770.111	762.334
AVERAGE UNIT OVER/(UNDER) RECOVERY 29/03/2019 - 12/04/2019	(55.623)	(54.978)	4.362	5.373	0.521

ANALYSIS MOVEMENT OF AVERAGE OVER/(UNDER) RECOVERY

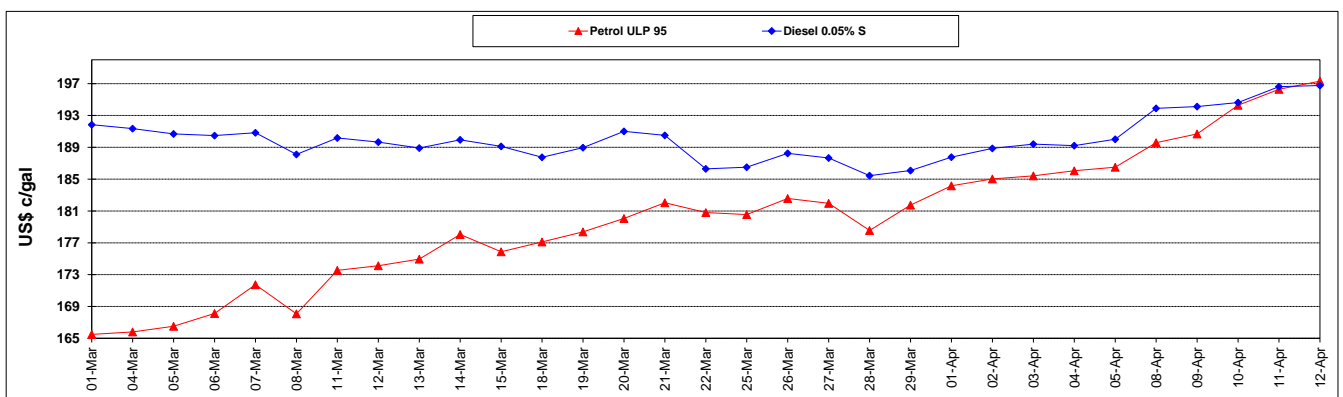
	PETROL 95	PETROL 93	DIESEL 0.05%	DIESEL 0.005%	ILL. PAR.
- MOVEMENT IN INTERNATIONAL PRODUCT PRICES	(68.540)	(67.714)	(8.797)	(7.890)	(12.609)
- MOVEMENT IN EXCHANGE RATE	12.917	12.737	13.159	13.264	13.130
AVERAGE UNIT OVER/(UNDER) RECOVERY 29/03/2019 - 12/04/2019	(55.623)	(54.978)	4.362	5.373	0.521

R/\$ EXCHANGE RATE - (R/\$13.9550 - 12/04/2019)

EXCHANGE RATE USED IN BASIC FUEL PRICE



INTERNATIONAL PRODUCT PRICES OF BASKET USED IN BASIC FUEL PRICE



BASIC FUEL PRICE IN SA CENTS PER LITRE

