

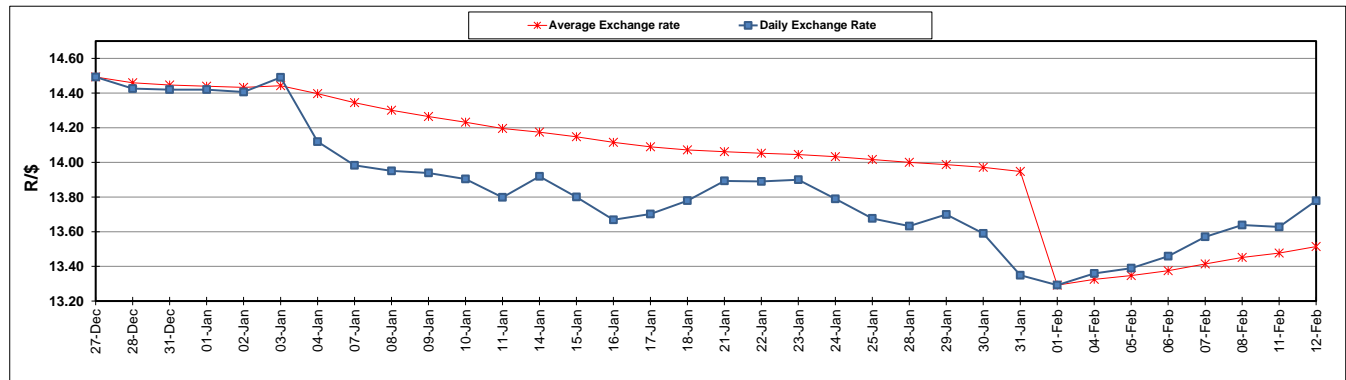
	PETROL 95 ULP	PETROL 93 ULP & LRP	DIESEL 0.05%	DIESEL 0.005%	ILL. PAR.
GAUTENG PUMP PRICE (SA c/l) AS FROM 06/02/2019	1 408.000	1 386.000	-	-	-
WHOLESALE PRICE (SA c/l) AS FROM 06/02/2019	-	-	1 314.420	1 318.820	823.678
SINGLE NATIONAL MAXIMUM RETAIL PRICE	-	-	-	-	1 060.000
BASIC FUEL PRICE - 12/02/2019 (SA c/l)	593.711	583.717	703.758	709.730	700.867
PRESS RELEASE CONTRIBUTION TO BFP 06/02/2019 - 12/02/2019 (SA c/l)	543.470	531.470	636.630	641.030	646.128
UNIT OVER/(UNDER) RECOVERY - 12/02/2019 (SA c/l)	(50.241)	(52.247)	(67.128)	(68.700)	(54.739)
AVERAGE BASIC FUEL PRICE 01/02/2019 - 12/02/2019	576.836	564.914	687.463	693.339	686.777
AVERAGE UNIT OVER/(UNDER) RECOVERY 01/02/2019 - 12/02/2019	(35.991)	(36.069)	(51.208)	(53.059)	(38.774)

ANALYSIS MOVEMENT OF AVERAGE OVER/(UNDER) RECOVERY

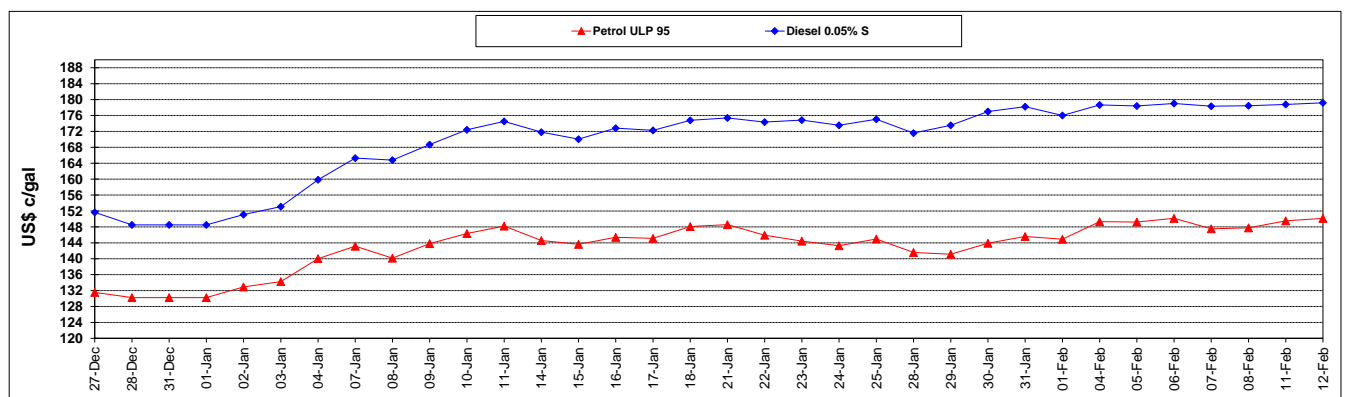
	PETROL 95	PETROL 93	DIESEL 0.05%	DIESEL 0.005%	ILL. PAR.
- MOVEMENT IN INTERNATIONAL PRODUCT PRICES	(55.510)	(55.185)	(74.471)	(76.521)	(62.013)
- MOVEMENT IN EXCHANGE RATE	19.519	19.116	23.263	23.462	23.239
AVERAGE UNIT OVER/(UNDER) RECOVERY 01/02/2019 - 12/02/2019	(35.991)	(36.069)	(51.208)	(53.059)	(38.774)

R/\$ EXCHANGE RATE - (R/\$13.7785 - 12/02/2019)

EXCHANGE RATE USED IN BASIC FUEL PRICE



INTERNATIONAL PRODUCT PRICES OF BASKET USED IN BASIC FUEL PRICE



BASIC FUEL PRICE IN SA CENTS PER LITRE

