

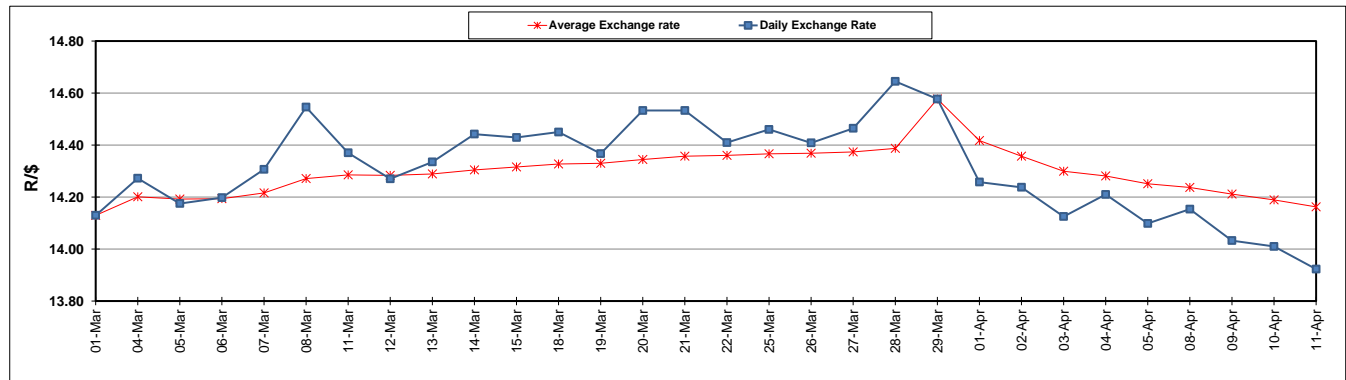
	PETROL 95 ULP	PETROL 93 ULP & LRP	DIESEL 0.05%	DIESEL 0.005%	ILL. PAR.
GAUTENG PUMP PRICE (SA c/l) AS FROM 03/04/2019	1 613.000	1 594.000	-	-	-
WHOLESALE PRICE (SA c/l) AS FROM 03/04/2019	-	-	1 487.120	1 494.520	962.678
SINGLE NATIONAL MAXIMUM RETAIL PRICE	-	-	-	-	1 227.000
BASIC FUEL PRICE - 11/04/2019 (SA c/l)	766.065	754.152	770.864	776.814	766.254
PRESS RELEASE CONTRIBUTION TO BFP 03/04/2019 - 11/04/2019 (SA c/l)	723.170	714.170	783.630	791.030	778.128
UNIT OVER/(UNDER) RECOVERY - 11/04/2019 (SA c/l)	(42.895)	(39.982)	12.766	14.216	11.874
AVERAGE BASIC FUEL PRICE 29/03/2019 - 11/04/2019	747.802	737.627	763.080	769.204	761.809
AVERAGE UNIT OVER/(UNDER) RECOVERY 29/03/2019 - 11/04/2019	(56.342)	(56.067)	3.750	4.726	(0.481)

ANALYSIS MOVEMENT OF AVERAGE OVER/(UNDER) RECOVERY

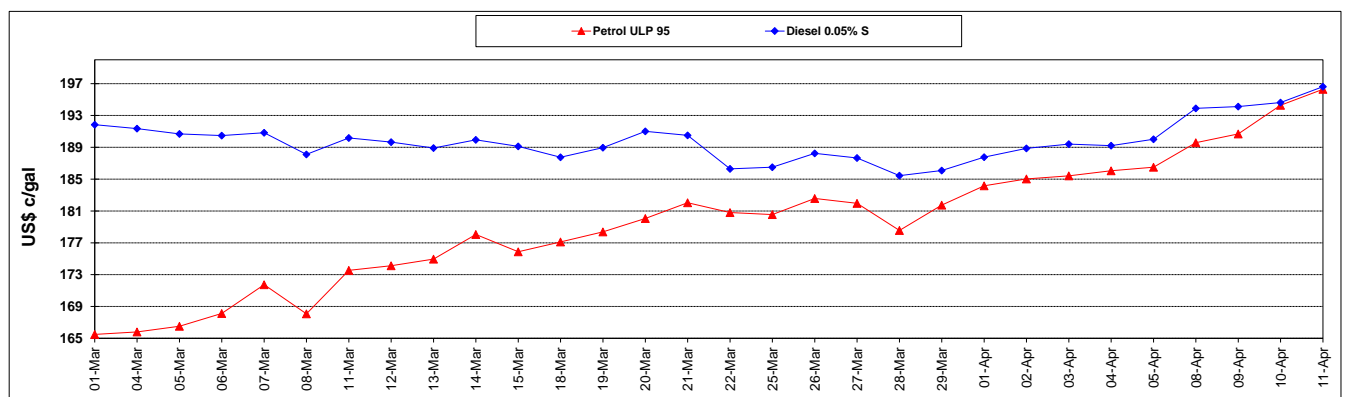
	PETROL 95	PETROL 93	DIESEL 0.05%	DIESEL 0.005%	ILL. PAR.
- MOVEMENT IN INTERNATIONAL PRODUCT PRICES	(68.207)	(67.770)	(8.357)	(7.478)	(12.568)
- MOVEMENT IN EXCHANGE RATE	11.865	11.703	12.107	12.204	12.087
AVERAGE UNIT OVER/(UNDER) RECOVERY 29/03/2019 - 11/04/2019	(56.342)	(56.067)	3.750	4.726	(0.481)

R/\$ EXCHANGE RATE - (R/\$13.9228 - 11/04/2019)

EXCHANGE RATE USED IN BASIC FUEL PRICE



INTERNATIONAL PRODUCT PRICES OF BASKET USED IN BASIC FUEL PRICE



BASIC FUEL PRICE IN SA CENTS PER LITRE

