

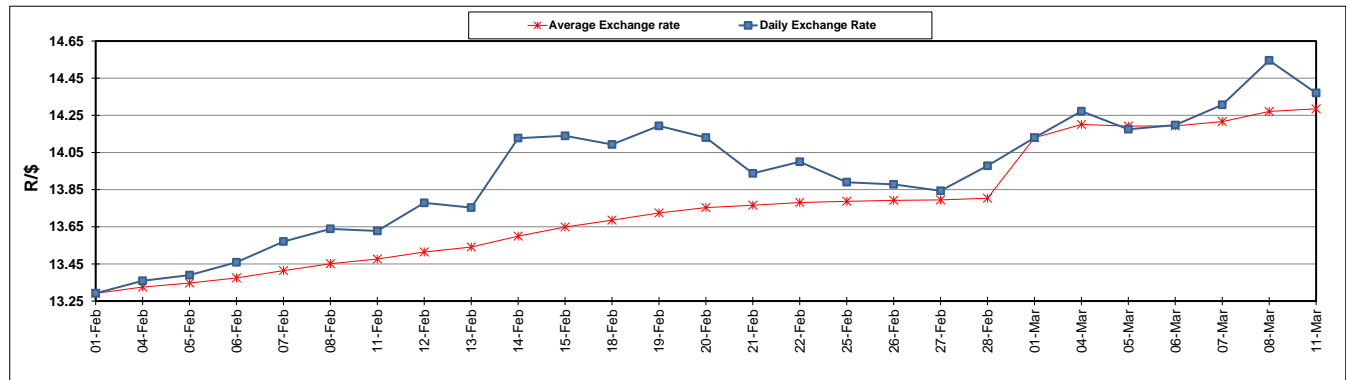
	PETROL 95 ULP	PETROL 93 ULP & LRP	DIESEL 0.05%	DIESEL 0.005%	ILL. PAR.
GAUTENG PUMP PRICE (SA c/l) AS FROM 06/03/2019	1 482.000	1 460.000	-	-	-
WHOLESALE PRICE (SA c/l) AS FROM 06/03/2019	-	-	1 405.420	1 411.820	899.678
SINGLE NATIONAL MAXIMUM RETAIL PRICE	-	-	-	-	1 162.000
BASIC FUEL PRICE - 11/03/2019 (SA c/l)	705.082	695.386	772.335	779.507	764.167
PRESS RELEASE CONTRIBUTION TO BFP 06/03/2019 - 11/03/2019 (SA c/l)	617.470	605.470	727.630	734.030	722.128
UNIT OVER/(UNDER) RECOVERY - 11/03/2019 (SA c/l)	(87.612)	(89.916)	(44.705)	(45.477)	(42.039)
AVERAGE BASIC FUEL PRICE 01/03/2019 - 11/03/2019	681.768	671.574	769.015	776.750	760.215
AVERAGE UNIT OVER/(UNDER) RECOVERY 01/03/2019 - 11/03/2019	(96.013)	(97.819)	(80.385)	(82.577)	(70.659)

### ANALYSIS MOVEMENT OF AVERAGE OVER/(UNDER) RECOVERY

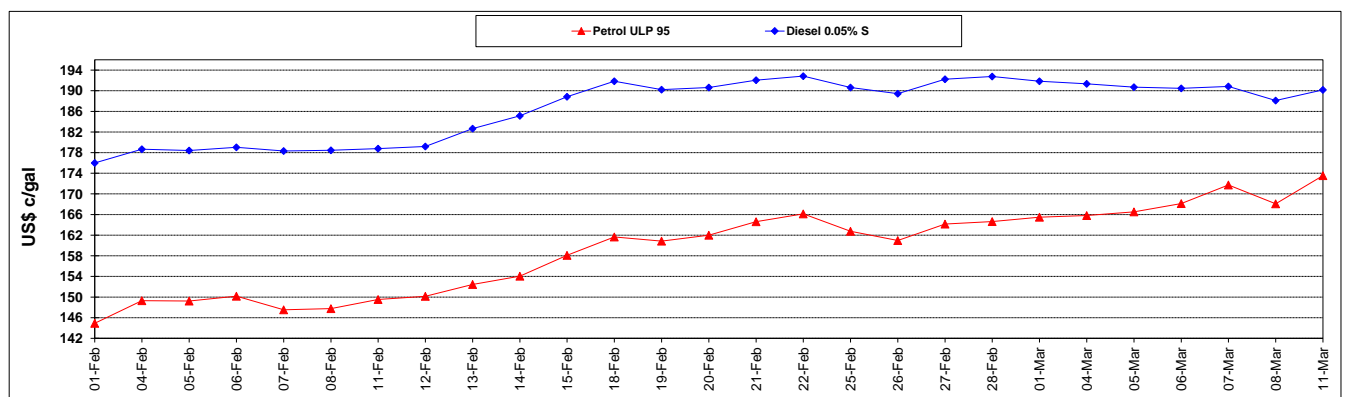
	PETROL 95	PETROL 93	DIESEL 0.05%	DIESEL 0.005%	ILL. PAR.
- MOVEMENT IN INTERNATIONAL PRODUCT PRICES	(73.037)	(75.186)	(54.470)	(56.401)	(45.039)
- MOVEMENT IN EXCHANGE RATE	(22.975)	(22.632)	(25.915)	(26.176)	(25.619)
AVERAGE UNIT OVER/(UNDER) RECOVERY 01/03/2019 - 11/03/2019	(96.013)	(97.819)	(80.385)	(82.577)	(70.659)

### R/\$ EXCHANGE RATE - (R/\$14.3700 - 11/03/2019)

#### EXCHANGE RATE USED IN BASIC FUEL PRICE



#### INTERNATIONAL PRODUCT PRICES OF BASKET USED IN BASIC FUEL PRICE



#### BASIC FUEL PRICE IN SA CENTS PER LITRE

