

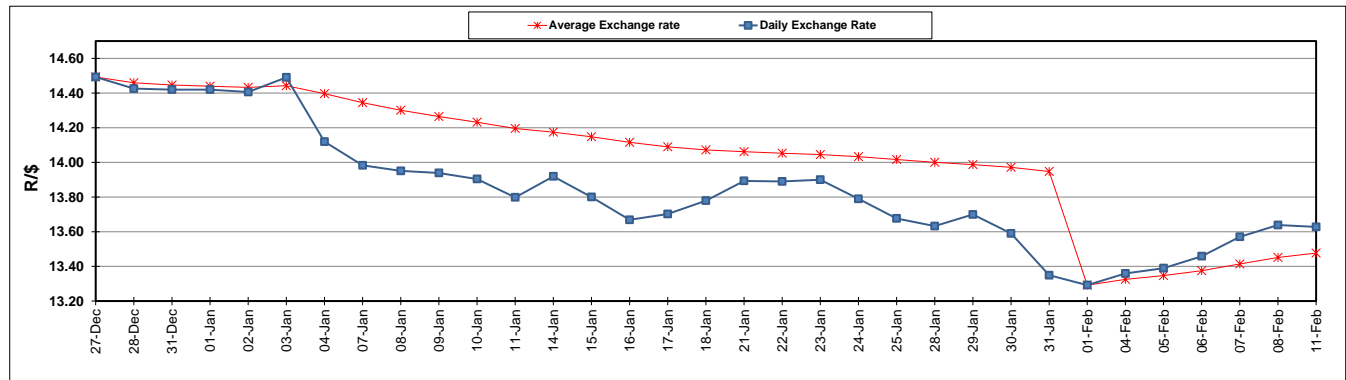
	PETROL 95 ULP	PETROL 93 ULP & LRP	DIESEL 0.05%	DIESEL 0.005%	ILL. PAR.
GAUTENG PUMP PRICE (SA c/l) AS FROM 06/02/2019	1 408.000	1 386.000	-	-	-
WHOLESALE PRICE (SA c/l) AS FROM 06/02/2019	-	-	1 314.420	1 318.820	823.678
SINGLE NATIONAL MAXIMUM RETAIL PRICE	-	-	-	-	1 060.000
BASIC FUEL PRICE - 11/02/2019 (SA c/l)	585.027	575.378	694.696	700.738	691.642
PRESS RELEASE CONTRIBUTION TO BFP 06/02/2019 - 11/02/2019 (SA c/l)	543.470	531.470	636.630	641.030	646.128
UNIT OVER/(UNDER) RECOVERY - 11/02/2019 (SA c/l)	(41.557)	(43.908)	(58.066)	(59.708)	(45.514)
AVERAGE BASIC FUEL PRICE 01/02/2019 - 11/02/2019	574.425	562.228	685.135	690.997	684.765
AVERAGE UNIT OVER/(UNDER) RECOVERY 01/02/2019 - 11/02/2019	(33.955)	(33.758)	(48.934)	(50.825)	(36.494)

ANALYSIS MOVEMENT OF AVERAGE OVER/(UNDER) RECOVERY

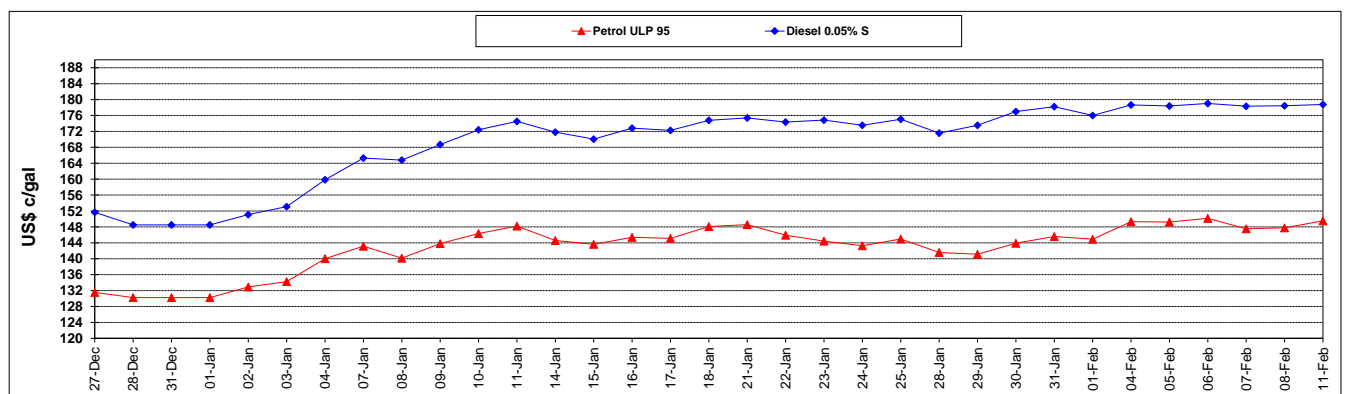
	PETROL 95	PETROL 93	DIESEL 0.05%	DIESEL 0.005%	ILL. PAR.
- MOVEMENT IN INTERNATIONAL PRODUCT PRICES	(55.054)	(54.409)	(74.099)	(76.205)	(61.646)
- MOVEMENT IN EXCHANGE RATE	21.099	20.651	25.165	25.381	25.152
AVERAGE UNIT OVER/(UNDER) RECOVERY 01/02/2019 - 11/02/2019	(33.955)	(33.758)	(48.934)	(50.825)	(36.494)

R/\$ EXCHANGE RATE - (R/\$13.6275 - 11/02/2019)

EXCHANGE RATE USED IN BASIC FUEL PRICE



INTERNATIONAL PRODUCT PRICES OF BASKET USED IN BASIC FUEL PRICE



BASIC FUEL PRICE IN SA CENTS PER LITRE

