

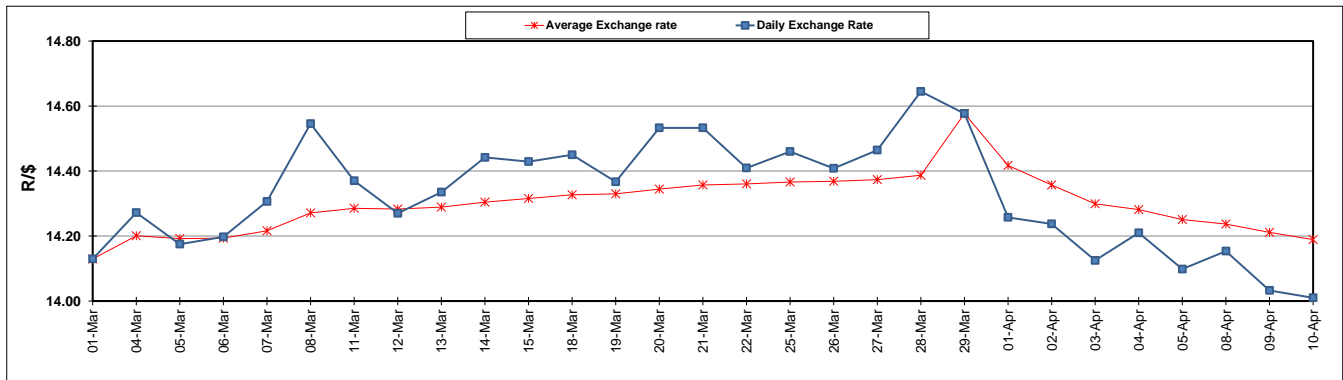
	PETROL 95 ULP	PETROL 93 ULP & LRP	DIESEL 0.05%	DIESEL 0.005%	ILL. PAR.
GAUTENG PUMP PRICE (SA c/l) AS FROM 03/04/2019	1 613.000	1 594.000	-	-	-
WHOLESALE PRICE (SA c/l) AS FROM 03/04/2019	-	-	1 487.120	1 494.520	962.678
SINGLE NATIONAL MAXIMUM RETAIL PRICE	-	-	-	-	1 227.000
BASIC FUEL PRICE - 10/04/2019 (SA c/l)	763.336	751.460	768.221	774.081	765.424
PRESS RELEASE CONTRIBUTION TO BFP 03/04/2019 - 10/04/2019 (SA c/l)	723.170	714.170	783.630	791.030	778.128
UNIT OVER/(UNDER) RECOVERY - 10/04/2019 (SA c/l)	(40.166)	(37.290)	15.409	16.949	12.704
AVERAGE BASIC FUEL PRICE 29/03/2019 - 10/04/2019	745.773	735.791	762.215	768.358	761.315
AVERAGE UNIT OVER/(UNDER) RECOVERY 29/03/2019 - 10/04/2019	(57.836)	(57.854)	2.748	3.672	(1.854)

ANALYSIS MOVEMENT OF AVERAGE OVER/(UNDER) RECOVERY

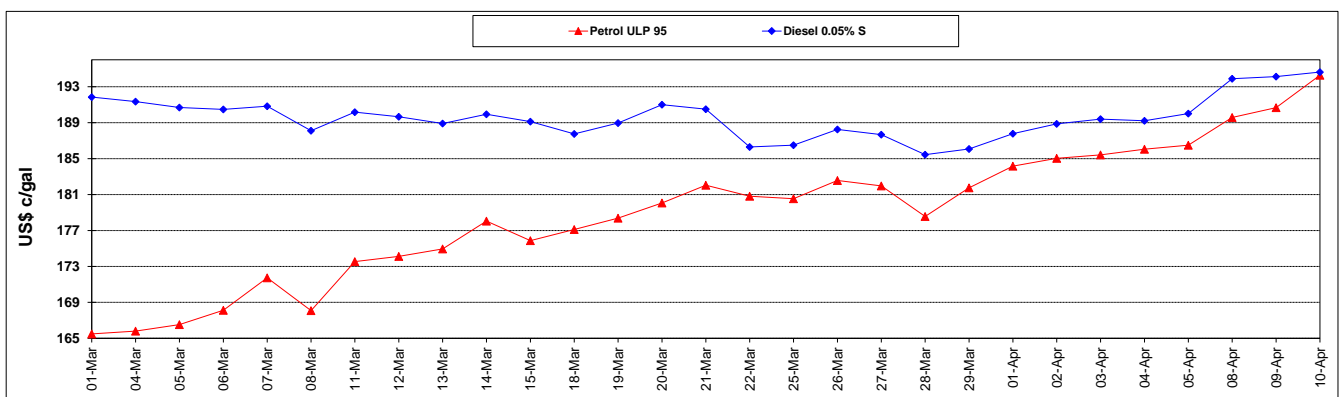
	PETROL 95	PETROL 93	DIESEL 0.05%	DIESEL 0.005%	ILL. PAR.
- MOVEMENT IN INTERNATIONAL PRODUCT PRICES	(68.248)	(68.127)	(7.894)	(7.055)	(12.483)
- MOVEMENT IN EXCHANGE RATE	10.412	10.273	10.642	10.727	10.629
AVERAGE UNIT OVER/(UNDER) RECOVERY 29/03/2019 - 10/04/2019	(57.836)	(57.854)	2.748	3.672	(1.854)

R/\$ EXCHANGE RATE - (R/\$14.0100 - 10/04/2019)

EXCHANGE RATE USED IN BASIC FUEL PRICE



INTERNATIONAL PRODUCT PRICES OF BASKET USED IN BASIC FUEL PRICE



BASIC FUEL PRICE IN SA CENTS PER LITRE

