

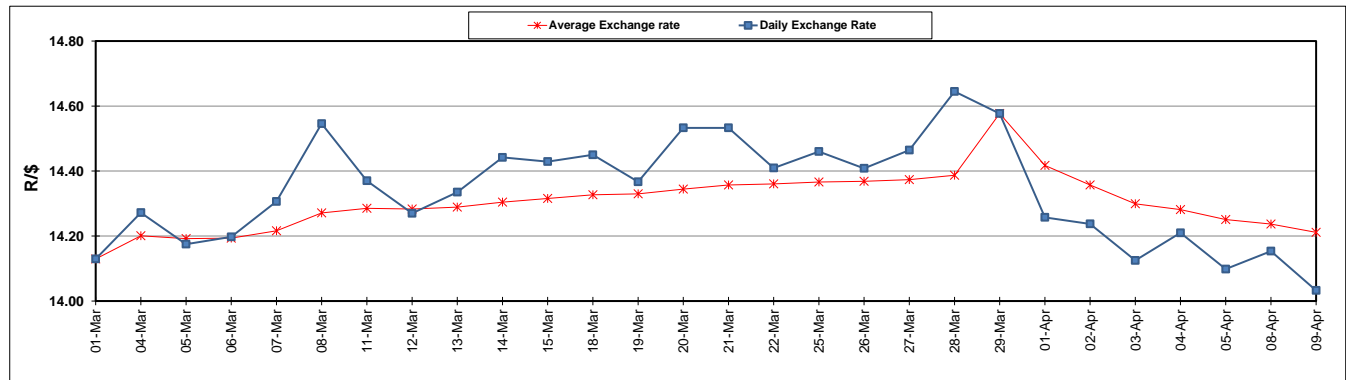
| | PETROL 95 ULP | PETROL 93 ULP & LRP | DIESEL 0.05% | DIESEL 0.005% | ILL. PAR. |
|--|---------------|---------------------|--------------|---------------|-----------|
| GAUTENG PUMP PRICE (SA c/l) AS FROM 03/04/2019 | 1 613.000 | 1 594.000 | - | - | - |
| WHOLESALE PRICE (SA c/l) AS FROM 03/04/2019 | - | - | 1 487.120 | 1 494.520 | 962.678 |
| SINGLE NATIONAL MAXIMUM RETAIL PRICE | - | - | - | - | 1 227.000 |
| BASIC FUEL PRICE - 09/04/2019 (SA c/l) | 751.123 | 740.704 | 767.558 | 773.370 | 765.704 |
| PRESS RELEASE CONTRIBUTION TO BFP 03/04/2019 - 09/04/2019 (SA c/l) | 723.170 | 714.170 | 783.630 | 791.030 | 778.128 |
| UNIT OVER/(UNDER) RECOVERY - 09/04/2019 (SA c/l) | (27.953) | (26.534) | 16.072 | 17.660 | 12.424 |
| AVERAGE BASIC FUEL PRICE 29/03/2019 - 09/04/2019 | 743.577 | 733.832 | 761.464 | 767.643 | 760.802 |
| AVERAGE UNIT OVER/(UNDER) RECOVERY 29/03/2019 - 09/04/2019 | (60.045) | (60.425) | 1.166 | 2.012 | (3.674) |

ANALYSIS MOVEMENT OF AVERAGE OVER/(UNDER) RECOVERY

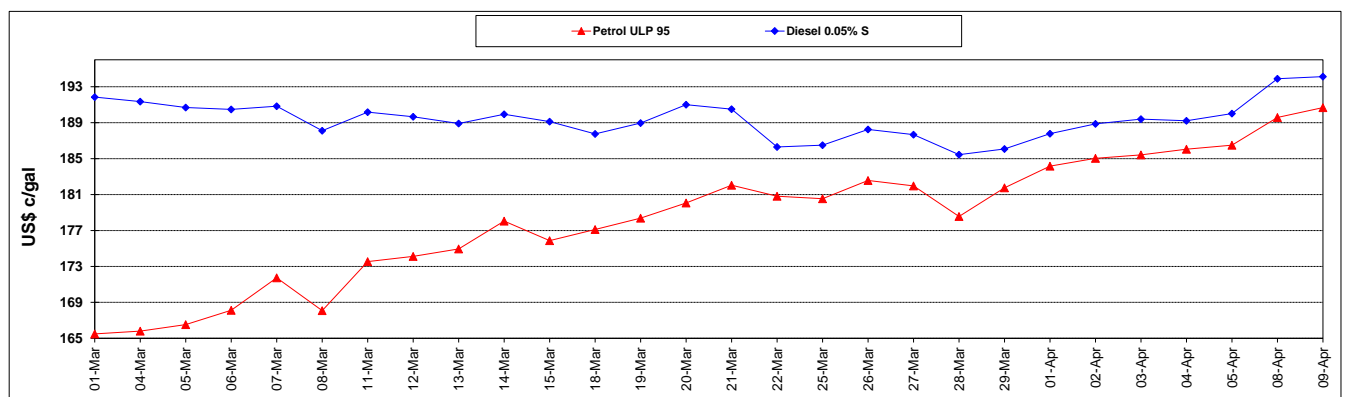
| | PETROL 95 | PETROL 93 | DIESEL 0.05% | DIESEL 0.005% | ILL. PAR. |
|--|-----------|-----------|--------------|---------------|-----------|
| - MOVEMENT IN INTERNATIONAL PRODUCT PRICES | (69.237) | (69.497) | (8.248) | (7.479) | (13.080) |
| - MOVEMENT IN EXCHANGE RATE | 9.193 | 9.073 | 9.414 | 9.491 | 9.406 |
| AVERAGE UNIT OVER/(UNDER) RECOVERY 29/03/2019 - 09/04/2019 | (60.045) | (60.425) | 1.166 | 2.012 | (3.674) |

R/\$ EXCHANGE RATE - (R/\$14.0325 - 09/04/2019)

EXCHANGE RATE USED IN BASIC FUEL PRICE



INTERNATIONAL PRODUCT PRICES OF BASKET USED IN BASIC FUEL PRICE



BASIC FUEL PRICE IN SA CENTS PER LITRE

