

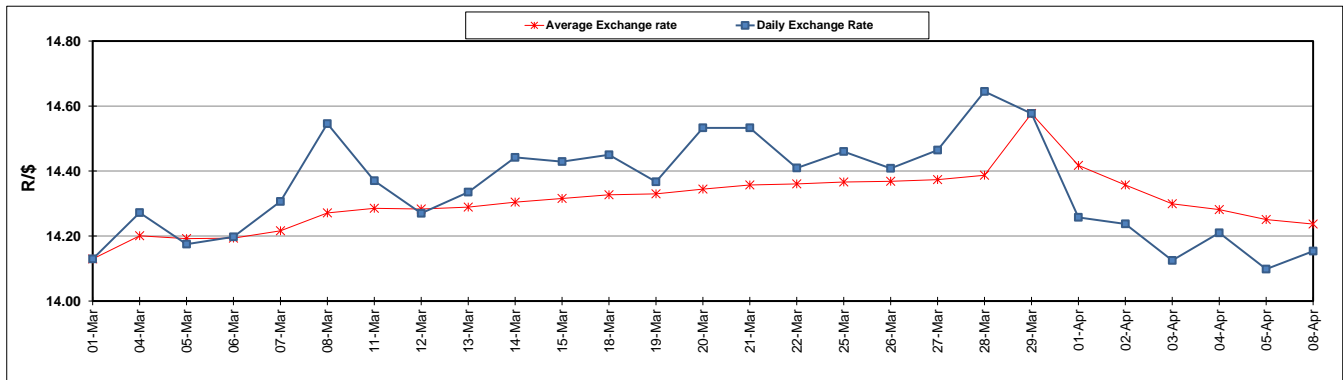
	PETROL 95 ULP	PETROL 93 ULP & LRP	DIESEL 0.05%	DIESEL 0.005%	ILL. PAR.
GAUTENG PUMP PRICE (SA c/l) AS FROM 03/04/2019	1 613.000	1 594.000	-	-	-
WHOLESALE PRICE (SA c/l) AS FROM 03/04/2019	-	-	1 487.120	1 494.520	962.678
SINGLE NATIONAL MAXIMUM RETAIL PRICE	-	-	-	-	1 227.000
BASIC FUEL PRICE - 08/04/2019 (SA c/l)	753.393	744.815	773.314	779.135	771.230
PRESS RELEASE CONTRIBUTION TO BFP 03/04/2019 - 08/04/2019 (SA c/l)	723.170	714.170	783.630	791.030	778.128
UNIT OVER/(UNDER) RECOVERY - 08/04/2019 (SA c/l)	(30.223)	(30.645)	10.316	11.895	6.898
AVERAGE BASIC FUEL PRICE 29/03/2019 - 08/04/2019	742.499	732.850	760.606	766.839	760.101
AVERAGE UNIT OVER/(UNDER) RECOVERY 29/03/2019 - 08/04/2019	(64.629)	(65.266)	(0.976)	(0.238)	(5.973)

ANALYSIS MOVEMENT OF AVERAGE OVER/(UNDER) RECOVERY

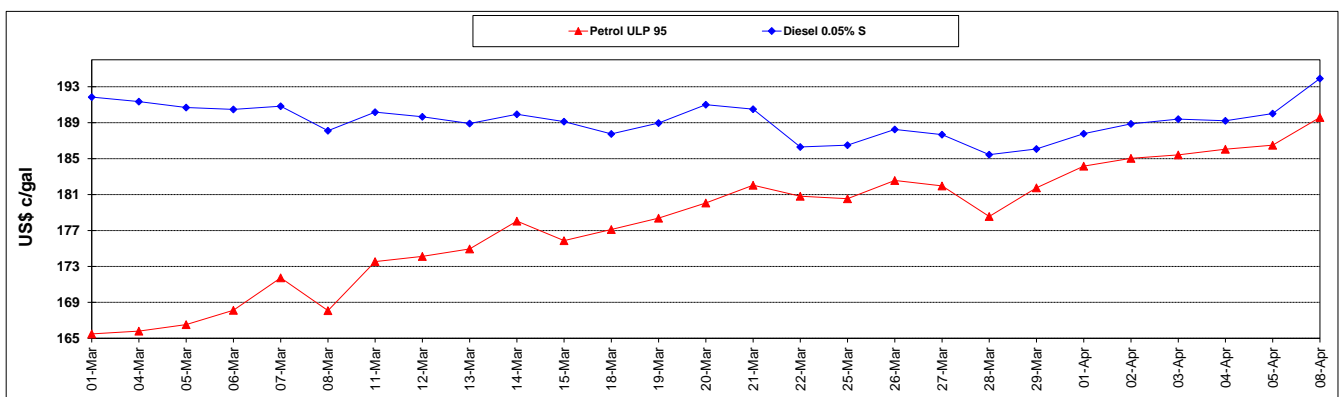
	PETROL 95	PETROL 93	DIESEL 0.05%	DIESEL 0.005%	ILL. PAR.
- MOVEMENT IN INTERNATIONAL PRODUCT PRICES	(72.462)	(72.998)	(9.000)	(8.328)	(13.992)
- MOVEMENT IN EXCHANGE RATE	7.833	7.732	8.024	8.090	8.019
AVERAGE UNIT OVER/(UNDER) RECOVERY 29/03/2019 - 08/04/2019	(64.629)	(65.266)	(0.976)	(0.238)	(5.973)

R/\$ EXCHANGE RATE - (R/\$14.1535 - 08/04/2019)

EXCHANGE RATE USED IN BASIC FUEL PRICE



INTERNATIONAL PRODUCT PRICES OF BASKET USED IN BASIC FUEL PRICE



BASIC FUEL PRICE IN SA CENTS PER LITRE

