

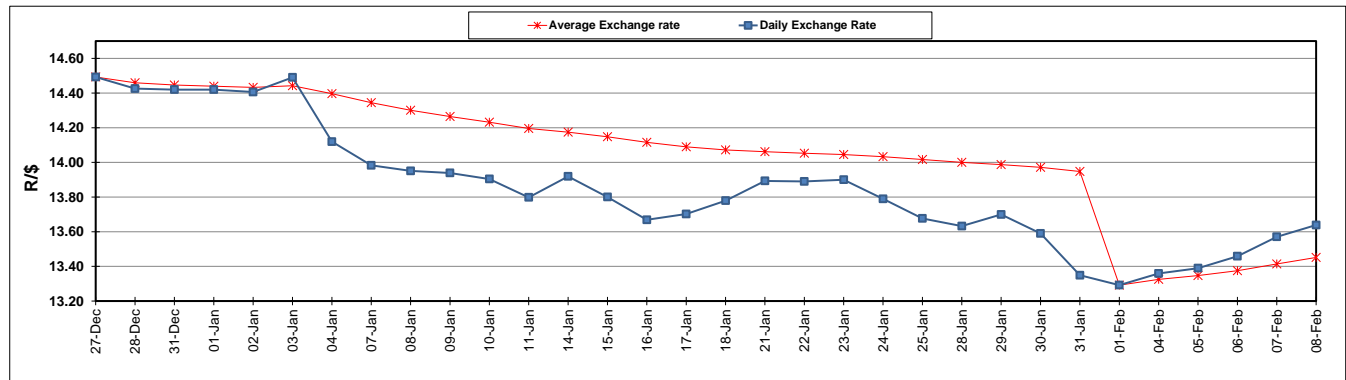
	PETROL 95 ULP	PETROL 93 ULP & LRP	DIESEL 0.05%	DIESEL 0.005%	ILL. PAR.
GAUTENG PUMP PRICE (SA c/l) AS FROM 06/02/2019	1 408.000	1 386.000	-	-	-
WHOLESALE PRICE (SA c/l) AS FROM 06/02/2019	-	-	1 314.420	1 318.820	823.678
SINGLE NATIONAL MAXIMUM RETAIL PRICE	-	-	-	-	1 060.000
BASIC FUEL PRICE - 08/02/2019 (SA c/l)	579.073	570.447	694.065	700.911	691.987
PRESS RELEASE CONTRIBUTION TO BFP 06/02/2019 - 08/02/2019 (SA c/l)	543.470	524.470	636.630	641.030	646.128
UNIT OVER/(UNDER) RECOVERY - 08/02/2019 (SA c/l)	(35.603)	(45.977)	(57.435)	(59.881)	(45.859)
AVERAGE BASIC FUEL PRICE 01/02/2019 - 08/02/2019	572.658	560.036	683.542	689.374	683.618
AVERAGE UNIT OVER/(UNDER) RECOVERY 01/02/2019 - 08/02/2019	(32.688)	(34.400)	(47.412)	(49.344)	(34.990)

ANALYSIS MOVEMENT OF AVERAGE OVER/(UNDER) RECOVERY

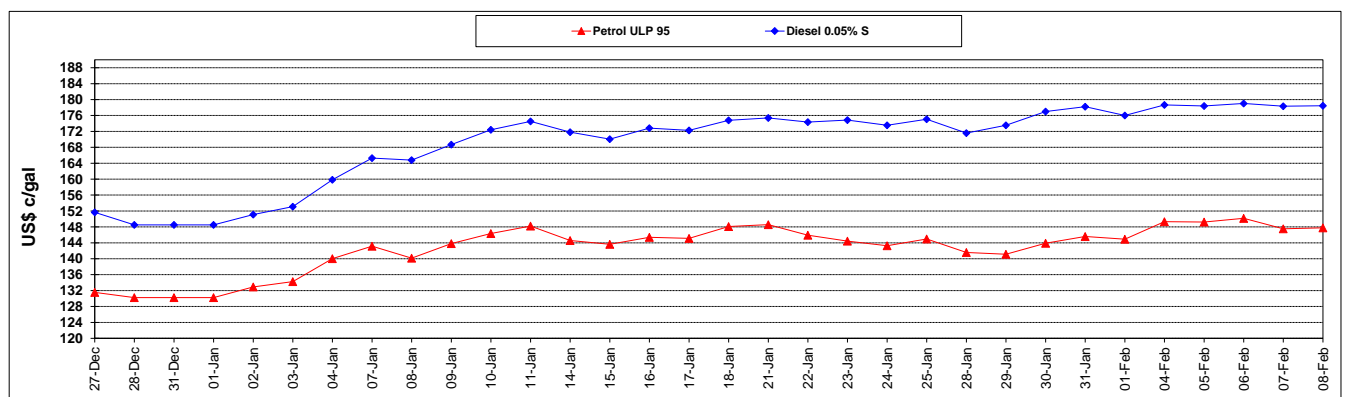
	PETROL 95	PETROL 93	DIESEL 0.05%	DIESEL 0.005%	ILL. PAR.
- MOVEMENT IN INTERNATIONAL PRODUCT PRICES	(54.834)	(56.057)	(73.847)	(76.004)	(61.427)
- MOVEMENT IN EXCHANGE RATE	22.146	21.658	26.435	26.660	26.437
AVERAGE UNIT OVER/(UNDER) RECOVERY 01/02/2019 - 08/02/2019	(32.688)	(34.400)	(47.412)	(49.344)	(34.990)

R/\$ EXCHANGE RATE - (R/\$13.6385 - 08/02/2019)

EXCHANGE RATE USED IN BASIC FUEL PRICE



INTERNATIONAL PRODUCT PRICES OF BASKET USED IN BASIC FUEL PRICE



BASIC FUEL PRICE IN SA CENTS PER LITRE

