

	PETROL 95 ULP	PETROL 93 ULP & LRP	DIESEL 0.05%	DIESEL 0.005%	ILL. PAR.
GAUTENG PUMP PRICE (SA c/l) AS FROM 01/05/2019	1 667.000	1 648.000	-	-	-
WHOLESALE PRICE (SA c/l) AS FROM 01/05/2019	-	-	1 488.120	1 494.520	965.678
SINGLE NATIONAL MAXIMUM RETAIL PRICE	-	-	-	-	1 231.000
BASIC FUEL PRICE - 07/05/2019 (SA c/l)	748.454	738.019	800.367	807.498	791.103
PRESS RELEASE CONTRIBUTION TO BFP 01/05/2019 - 07/05/2019 (SA c/l)	777.170	768.170	784.630	791.030	781.128
UNIT OVER/(UNDER) RECOVERY - 07/05/2019 (SA c/l)	28.716	30.151	(15.737)	(16.468)	(9.975)
AVERAGE BASIC FUEL PRICE 26/04/2019 - 07/05/2019	772.861	761.870	799.171	805.925	792.778
AVERAGE UNIT OVER/(UNDER) RECOVERY 26/04/2019 - 07/05/2019	(15.941)	(13.950)	(14.916)	(14.895)	(12.775)

ANALYSIS MOVEMENT OF AVERAGE OVER/(UNDER) RECOVERY

- MOVEMENT IN INTERNATIONAL PRODUCT PRICES

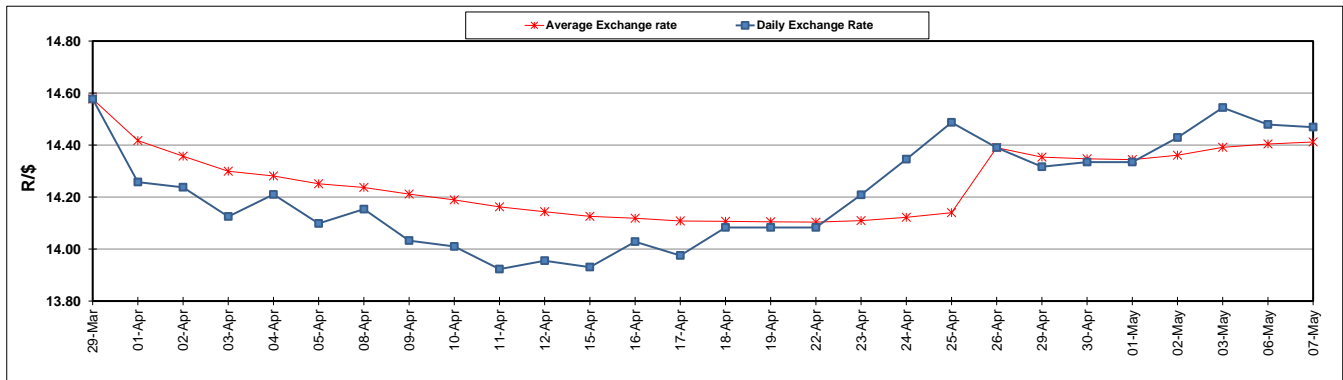
- MOVEMENT IN EXCHANGE RATE

AVERAGE UNIT OVER/(UNDER) RECOVERY 26/04/2019 - 07/05/2019

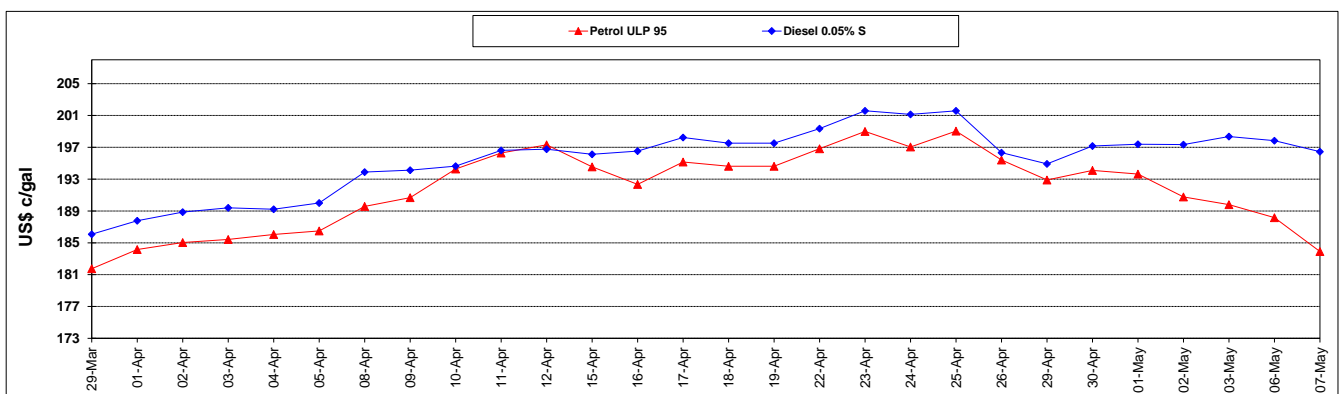
	PETROL 95	PETROL 93	DIESEL 0.05%	DIESEL 0.005%	ILL. PAR.
- MOVEMENT IN INTERNATIONAL PRODUCT PRICES	(1.360)	0.424	0.161	0.310	2.182
- MOVEMENT IN EXCHANGE RATE	(14.581)	(14.374)	(15.077)	(15.205)	(14.957)
AVERAGE UNIT OVER/(UNDER) RECOVERY 26/04/2019 - 07/05/2019	(15.941)	(13.950)	(14.916)	(14.895)	(12.775)

R/\$ EXCHANGE RATE - (R/\$14.4688 - 07/05/2019)

EXCHANGE RATE USED IN BASIC FUEL PRICE



INTERNATIONAL PRODUCT PRICES OF BASKET USED IN BASIC FUEL PRICE



BASIC FUEL PRICE IN SA CENTS PER LITRE

