

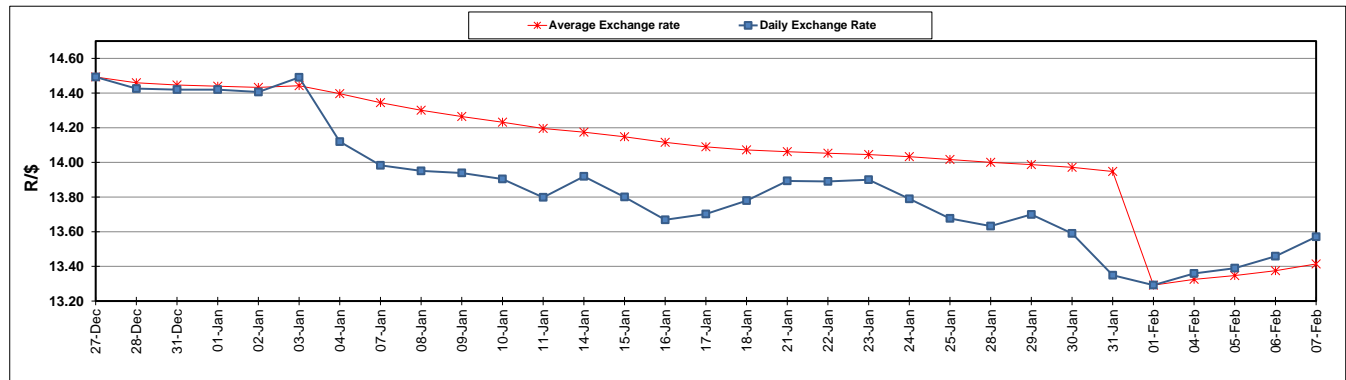
	PETROL 95 ULP	PETROL 93 ULP & LRP	DIESEL 0.05%	DIESEL 0.005%	ILL. PAR.
GAUTENG PUMP PRICE (SA c/l) AS FROM 06/02/2019	1 408.000	1 386.000	-	-	-
WHOLESALE PRICE (SA c/l) AS FROM 06/02/2019	-	-	1 314.420	1 318.820	823.678
SINGLE NATIONAL MAXIMUM RETAIL PRICE	-	-	-	-	1 060.000
BASIC FUEL PRICE - 07/02/2019 (SA c/l)	575.420	563.123	690.153	696.623	688.813
PRESS RELEASE CONTRIBUTION TO BFP 06/02/2019 - 07/02/2019 (SA c/l)	543.470	524.470	636.630	641.030	646.128
UNIT OVER/(UNDER) RECOVERY - 07/02/2019 (SA c/l)	(31.950)	(38.653)	(53.523)	(55.593)	(42.685)
AVERAGE BASIC FUEL PRICE 01/02/2019 - 07/02/2019	571.375	557.954	681.437	687.067	681.945
AVERAGE UNIT OVER/(UNDER) RECOVERY 01/02/2019 - 07/02/2019	(32.105)	(32.084)	(45.407)	(47.237)	(32.817)

ANALYSIS MOVEMENT OF AVERAGE OVER/(UNDER) RECOVERY

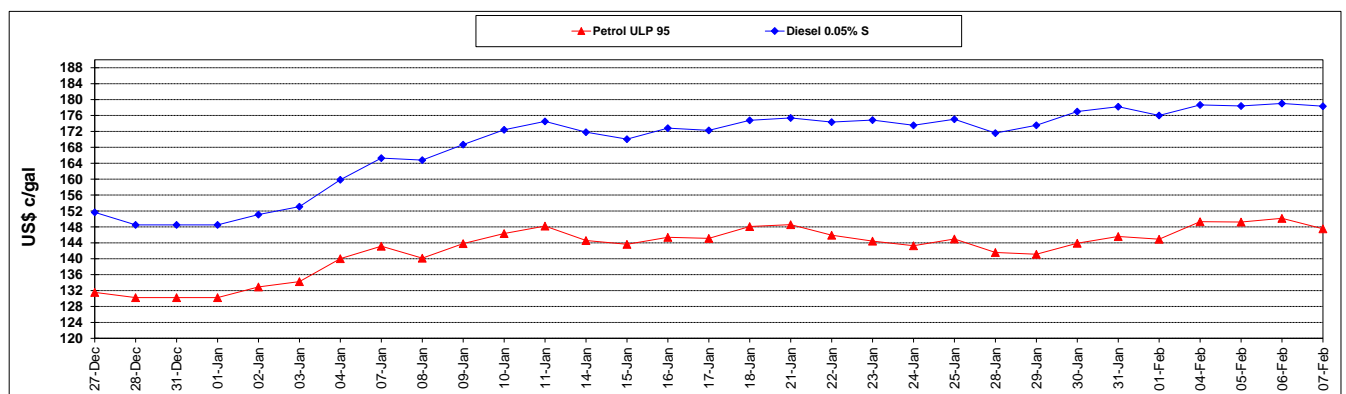
	PETROL 95	PETROL 93	DIESEL 0.05%	DIESEL 0.005%	ILL. PAR.
- MOVEMENT IN INTERNATIONAL PRODUCT PRICES	(55.856)	(55.277)	(73.734)	(75.798)	(61.165)
- MOVEMENT IN EXCHANGE RATE	23.751	23.193	28.327	28.561	28.348
AVERAGE UNIT OVER/(UNDER) RECOVERY 01/02/2019 - 07/02/2019	(32.105)	(32.084)	(45.407)	(47.237)	(32.817)

R/\$ EXCHANGE RATE - (R/\$13.5705 - 07/02/2019)

EXCHANGE RATE USED IN BASIC FUEL PRICE



INTERNATIONAL PRODUCT PRICES OF BASKET USED IN BASIC FUEL PRICE



BASIC FUEL PRICE IN SA CENTS PER LITRE

