

|  | PETROL 95 ULP | PETROL 93 ULP & LRP | DIESEL 0.05% | DIESEL 0.005% | ILL. PAR. |
|--|---------------|---------------------|--------------|---------------|-----------|
| GAUTENG PUMP PRICE (SA c/l) AS FROM 01/05/2019                     | 1 667.000     | 1 648.000           | -            | -             | -         |
| WHOLESALE PRICE (SA c/l) AS FROM 01/05/2019                        | -             | -                   | 1 488.120    | 1 494.520     | 965.678   |
| SINGLE NATIONAL MAXIMUM RETAIL PRICE                               | -             | -                   | -            | -             | 1 231.000 |
| BASIC FUEL PRICE - 06/05/2019 (SA c/l)                             | 765.318       | 754.874             | 806.223      | 812.951       | 796.399   |
| PRESS RELEASE CONTRIBUTION TO BFP 01/05/2019 - 06/05/2019 (SA c/l) | 777.170       | 768.170             | 784.630      | 791.030       | 781.128   |
| UNIT OVER/(UNDER) RECOVERY - 06/05/2019 (SA c/l)                   | 11.852        | 13.296              | (21.593)     | (21.921)      | (15.271)  |
| AVERAGE BASIC FUEL PRICE 26/04/2019 - 06/05/2019                   | 776.348       | 765.277             | 799.001      | 805.700       | 793.018   |
| AVERAGE UNIT OVER/(UNDER) RECOVERY 26/04/2019 - 06/05/2019         | (22.321)      | (20.250)            | (14.799)     | (14.670)      | (13.175)  |

### ANALYSIS MOVEMENT OF AVERAGE OVER/(UNDER) RECOVERY

- MOVEMENT IN INTERNATIONAL PRODUCT PRICES

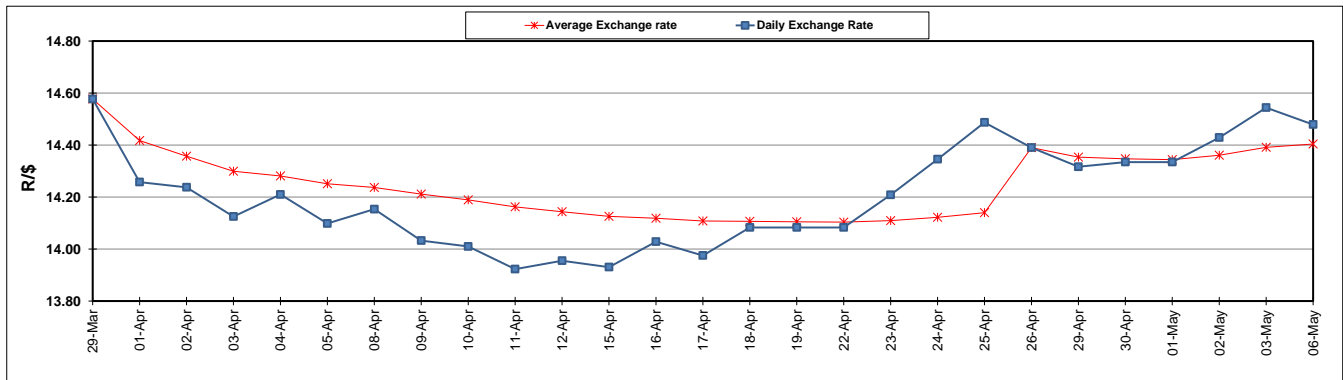
- MOVEMENT IN EXCHANGE RATE

AVERAGE UNIT OVER/(UNDER) RECOVERY 26/04/2019 - 06/05/2019

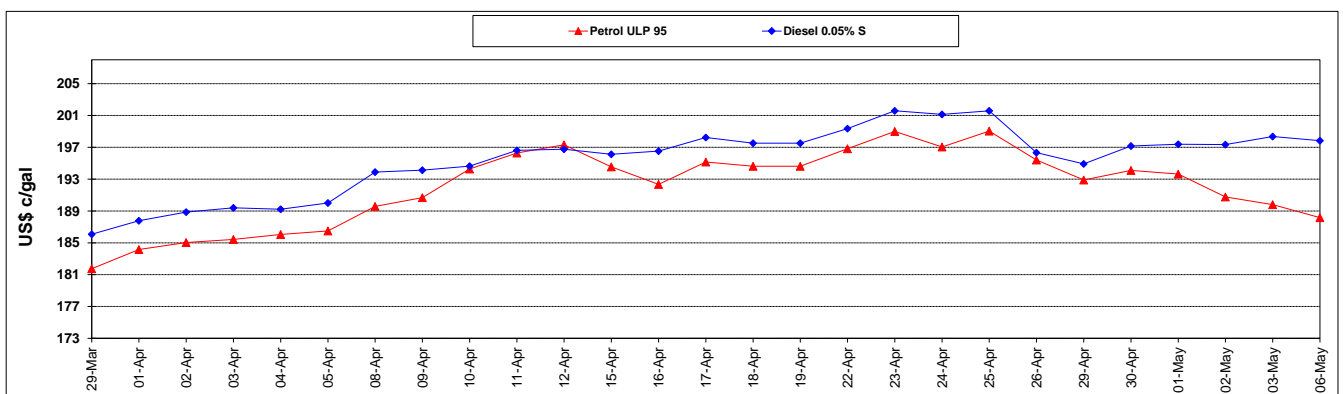
|  | PETROL 95 | PETROL 93 | DIESEL 0.05% | DIESEL 0.005% | ILL. PAR. |
|--|-----------|-----------|--------------|---------------|-----------|
| - MOVEMENT IN INTERNATIONAL PRODUCT PRICES                 | (8.103)   | (6.234)   | (0.167)      | 0.086         | 1.348     |
| - MOVEMENT IN EXCHANGE RATE                                | (14.218)  | (14.016)  | (14.633)     | (14.756)      | (14.524)  |
| AVERAGE UNIT OVER/(UNDER) RECOVERY 26/04/2019 - 06/05/2019 | (22.321)  | (20.250)  | (14.799)     | (14.670)      | (13.175)  |

### R/\$ EXCHANGE RATE - (R/\$14.4788 - 06/05/2019)

#### EXCHANGE RATE USED IN BASIC FUEL PRICE



#### INTERNATIONAL PRODUCT PRICES OF BASKET USED IN BASIC FUEL PRICE



#### BASIC FUEL PRICE IN SA CENTS PER LITRE

