

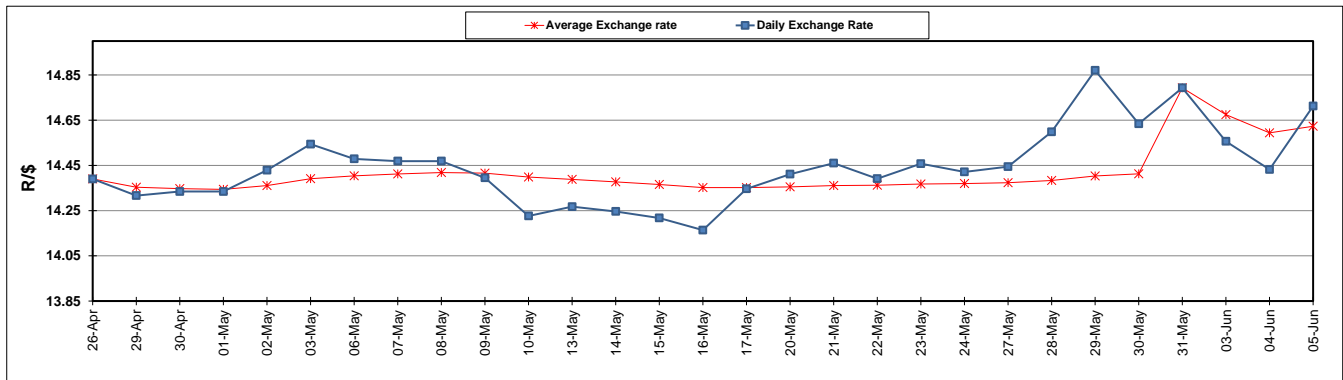
	PETROL 95 ULP	PETROL 93 ULP & LRP	DIESEL 0.05%	DIESEL 0.005%	ILL. PAR.
GAUTENG PUMP PRICE (SA c/l) AS FROM 05/06/2019	1 676.000	1 657.000	-	-	-
WHOLESALE PRICE (SA c/l) AS FROM 05/06/2019	-	-	1 521.280	1 527.680	973.678
SINGLE NATIONAL MAXIMUM RETAIL PRICE	-	-	-	-	1 241.000
BASIC FUEL PRICE - 05/06/2019 (SA c/l)	661.686	651.758	707.890	713.003	710.034
PRESS RELEASE CONTRIBUTION TO BFP 05/06/2019 - 05/06/2019 (SA c/l)	764.010	755.010	794.630	801.030	789.128
UNIT OVER/(UNDER) RECOVERY - 05/06/2019 (SA c/l)	102.324	103.252	86.740	88.027	79.094
AVERAGE BASIC FUEL PRICE 31/05/2019 - 05/06/2019	668.878	659.124	720.034	725.298	720.650
AVERAGE UNIT OVER/(UNDER) RECOVERY 31/05/2019 - 05/06/2019	105.002	105.756	67.096	68.232	62.478

ANALYSIS MOVEMENT OF AVERAGE OVER/(UNDER) RECOVERY

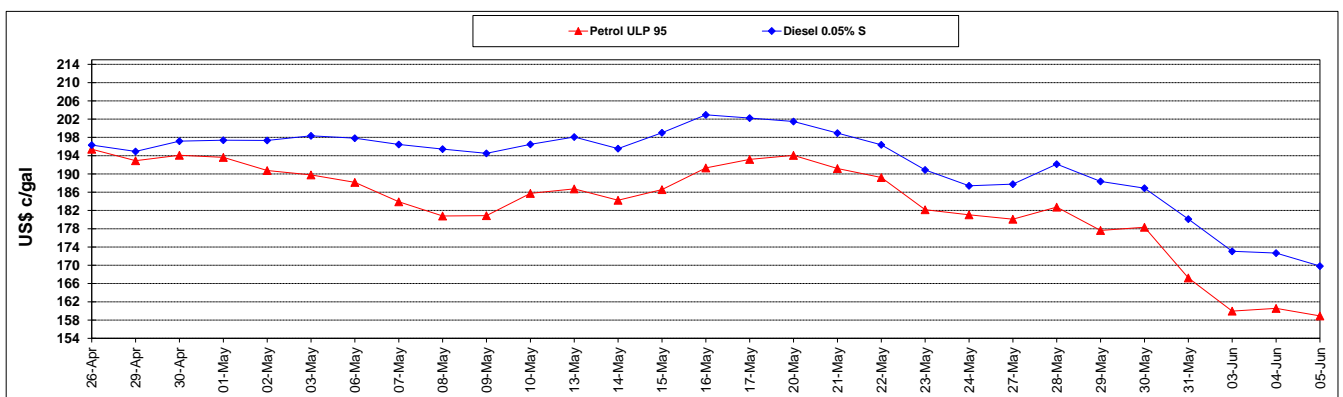
	PETROL 95	PETROL 93	DIESEL 0.05%	DIESEL 0.005%	ILL. PAR.
- MOVEMENT IN INTERNATIONAL PRODUCT PRICES	114.639	115.253	77.471	78.682	72.861
- MOVEMENT IN EXCHANGE RATE	(9.637)	(9.497)	(10.375)	(10.450)	(10.383)
AVERAGE UNIT OVER/(UNDER) RECOVERY 31/05/2019 - 05/06/2019	105.002	105.756	67.096	68.232	62.478

R/\$ EXCHANGE RATE - (R/\$14.7123 - 05/06/2019)

EXCHANGE RATE USED IN BASIC FUEL PRICE



INTERNATIONAL PRODUCT PRICES OF BASKET USED IN BASIC FUEL PRICE



BASIC FUEL PRICE IN SA CENTS PER LITRE

