

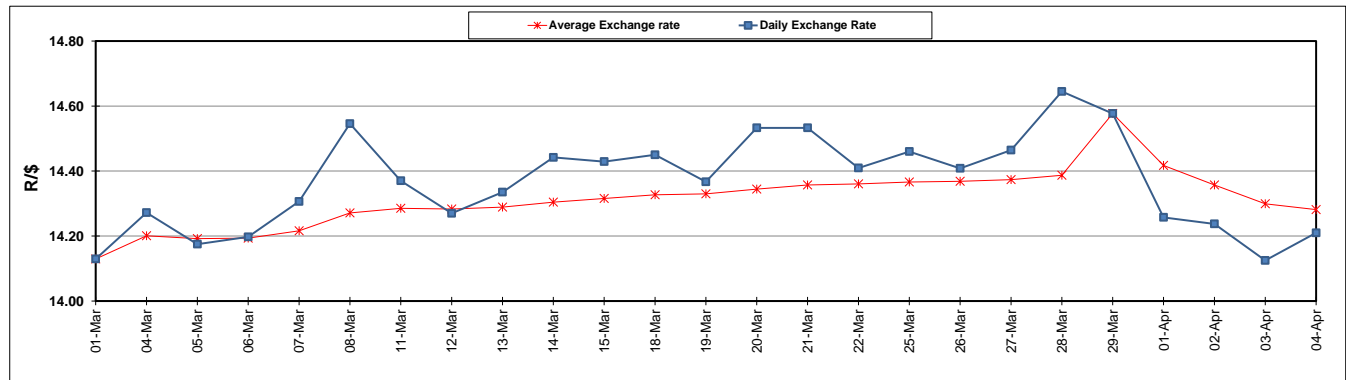
	PETROL 95 ULP	PETROL 93 ULP & LRP	DIESEL 0.05%	DIESEL 0.005%	ILL. PAR.
GAUTENG PUMP PRICE (SA c/l) AS FROM 03/04/2019	1 613.000	1 594.000	-	-	-
WHOLESALE PRICE (SA c/l) AS FROM 03/04/2019	-	-	1 487.120	1 494.520	962.678
SINGLE NATIONAL MAXIMUM RETAIL PRICE	-	-	-	-	1 227.000
BASIC FUEL PRICE - 04/04/2019 (SA c/l)	743.036	733.503	758.586	764.701	758.461
PRESS RELEASE CONTRIBUTION TO BFP 03/04/2019 - 04/04/2019 (SA c/l)	723.170	714.170	783.630	791.030	778.128
UNIT OVER/(UNDER) RECOVERY - 04/04/2019 (SA c/l)	(19.866)	(19.333)	25.044	26.329	19.667
AVERAGE BASIC FUEL PRICE 29/03/2019 - 04/04/2019	741.030	731.257	759.047	765.439	758.967
AVERAGE UNIT OVER/(UNDER) RECOVERY 29/03/2019 - 04/04/2019	(81.280)	(82.307)	(9.017)	(8.609)	(14.439)

ANALYSIS MOVEMENT OF AVERAGE OVER/(UNDER) RECOVERY

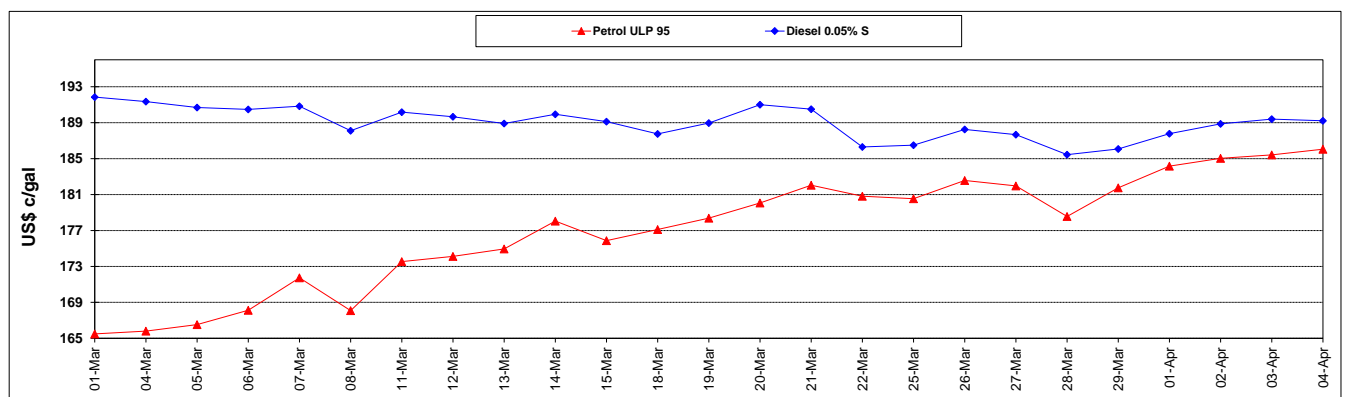
	PETROL 95	PETROL 93	DIESEL 0.05%	DIESEL 0.005%	ILL. PAR.
- MOVEMENT IN INTERNATIONAL PRODUCT PRICES	(86.770)	(87.724)	(14.640)	(14.280)	(20.062)
- MOVEMENT IN EXCHANGE RATE	5.490	5.417	5.623	5.671	5.623
AVERAGE UNIT OVER/(UNDER) RECOVERY 29/03/2019 - 04/04/2019	(81.280)	(82.307)	(9.017)	(8.609)	(14.439)

R/\$ EXCHANGE RATE - (R/\$14.2098 - 04/04/2019)

EXCHANGE RATE USED IN BASIC FUEL PRICE



INTERNATIONAL PRODUCT PRICES OF BASKET USED IN BASIC FUEL PRICE



BASIC FUEL PRICE IN SA CENTS PER LITRE

