

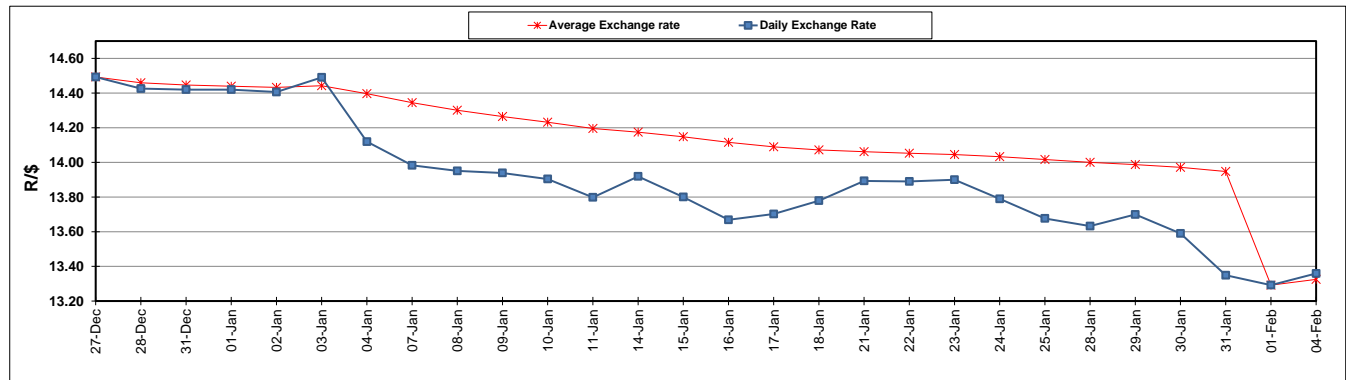
	PETROL 95 ULP	PETROL 93 ULP & LRP	DIESEL 0.05%	DIESEL 0.005%	ILL. PAR.
GAUTENG PUMP PRICE (SA c/l) AS FROM 06/02/2019	1 408.000	1 386.000	-	-	-
WHOLESALE PRICE (SA c/l) AS FROM 06/02/2019	-	-	1 314.420	1 318.820	823.678
SINGLE NATIONAL MAXIMUM RETAIL PRICE	-	-	-	-	1 060.000
BASIC FUEL PRICE - 04/02/2019 (SA c/l)	572.873	558.798	680.732	686.090	681.316
PRESS RELEASE CONTRIBUTION TO BFP 01/02/2019 - 04/02/2019 (SA c/l)	536.470	524.470	635.630	639.030	651.128
UNIT OVER/(UNDER) RECOVERY - 04/02/2019 (SA c/l)	(36.403)	(34.328)	(45.102)	(47.060)	(30.188)
AVERAGE BASIC FUEL PRICE 01/02/2019 - 04/02/2019	563.708	550.453	674.329	679.499	675.395
AVERAGE UNIT OVER/(UNDER) RECOVERY 01/02/2019 - 04/02/2019	(27.238)	(25.983)	(38.699)	(40.469)	(24.267)

ANALYSIS MOVEMENT OF AVERAGE OVER/(UNDER) RECOVERY

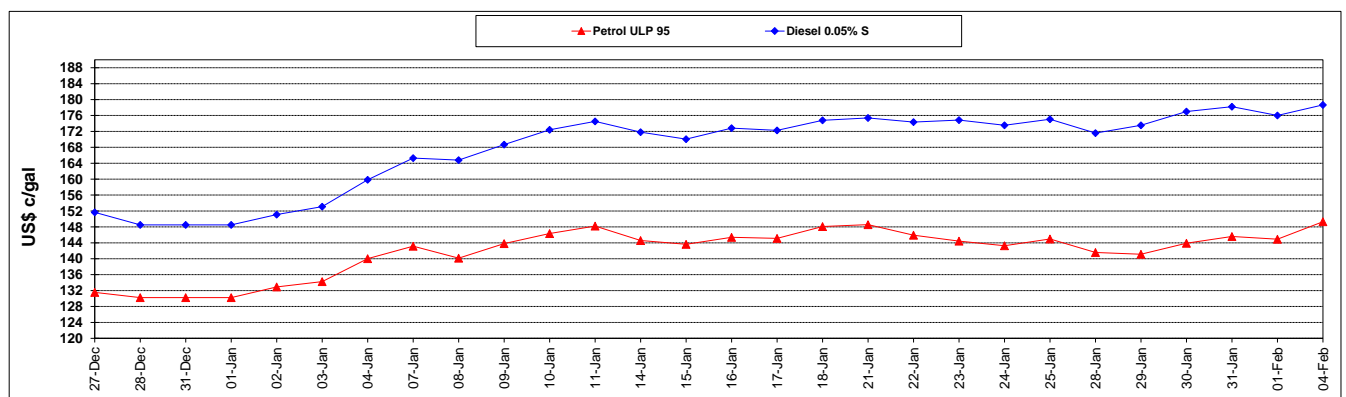
	PETROL 95	PETROL 93	DIESEL 0.05%	DIESEL 0.005%	ILL. PAR.
- MOVEMENT IN INTERNATIONAL PRODUCT PRICES	(54.570)	(52.672)	(71.395)	(73.415)	(57.014)
- MOVEMENT IN EXCHANGE RATE	27.332	26.689	32.696	32.946	32.747
AVERAGE UNIT OVER/(UNDER) RECOVERY 01/02/2019 - 04/02/2019	(27.238)	(25.983)	(38.699)	(40.469)	(24.267)

R/\$ EXCHANGE RATE - (R/\$13.3590 - 04/02/2019)

EXCHANGE RATE USED IN BASIC FUEL PRICE



INTERNATIONAL PRODUCT PRICES OF BASKET USED IN BASIC FUEL PRICE



BASIC FUEL PRICE IN SA CENTS PER LITRE

