

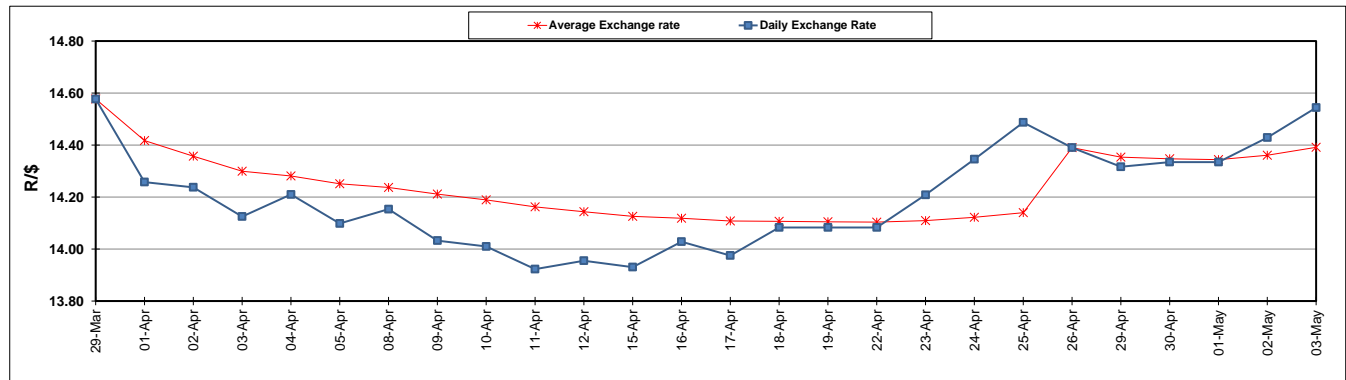
	PETROL 95 ULP	PETROL 93 ULP & LRP	DIESEL 0.05%	DIESEL 0.005%	ILL. PAR.
GAUTENG PUMP PRICE (SA c/l) AS FROM 01/05/2019	1 667.000	1 648.000	-	-	-
WHOLESALE PRICE (SA c/l) AS FROM 01/05/2019	-	-	1 488.120	1 494.520	965.678
SINGLE NATIONAL MAXIMUM RETAIL PRICE	-	-	-	-	1 231.000
BASIC FUEL PRICE - 03/05/2019 (SA c/l)	775.033	764.542	811.833	818.607	803.125
PRESS RELEASE CONTRIBUTION TO BFP 01/05/2019 - 03/05/2019 (SA c/l)	777.170	768.170	784.630	791.030	781.128
UNIT OVER/(UNDER) RECOVERY - 03/05/2019 (SA c/l)	2.137	3.628	(27.203)	(27.577)	(21.997)
AVERAGE BASIC FUEL PRICE 26/04/2019 - 03/05/2019	778.186	767.011	797.797	804.492	792.454
AVERAGE UNIT OVER/(UNDER) RECOVERY 26/04/2019 - 03/05/2019	(28.016)	(25.841)	(13.667)	(13.462)	(12.826)

ANALYSIS MOVEMENT OF AVERAGE OVER/(UNDER) RECOVERY

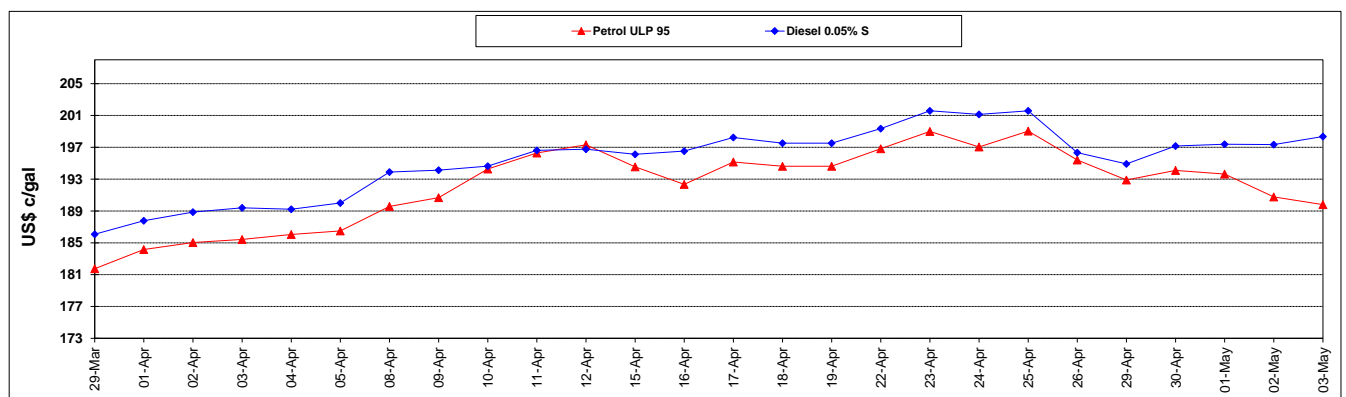
	PETROL 95	PETROL 93	DIESEL 0.05%	DIESEL 0.005%	ILL. PAR.
- MOVEMENT IN INTERNATIONAL PRODUCT PRICES	(14.427)	(12.448)	0.264	0.586	1.012
- MOVEMENT IN EXCHANGE RATE	(13.589)	(13.393)	(13.931)	(14.048)	(13.838)
AVERAGE UNIT OVER/(UNDER) RECOVERY 26/04/2019 - 03/05/2019	(28.016)	(25.841)	(13.667)	(13.462)	(12.826)

R/\$ EXCHANGE RATE - (R/\$14.5441 - 03/05/2019)

EXCHANGE RATE USED IN BASIC FUEL PRICE



INTERNATIONAL PRODUCT PRICES OF BASKET USED IN BASIC FUEL PRICE



BASIC FUEL PRICE IN SA CENTS PER LITRE

