

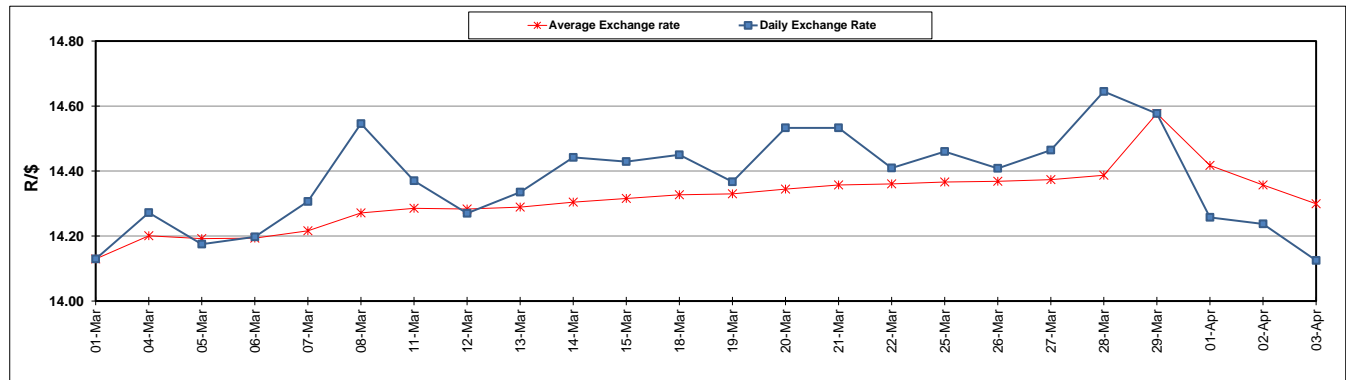
	PETROL 95 ULP	PETROL 93 ULP & LRP	DIESEL 0.05%	DIESEL 0.005%	ILL. PAR.
GAUTENG PUMP PRICE (SA c/l) AS FROM 03/04/2019	1 613.000	1 594.000	-	-	-
WHOLESALE PRICE (SA c/l) AS FROM 03/04/2019	-	-	1 487.120	1 494.520	962.678
SINGLE NATIONAL MAXIMUM RETAIL PRICE	-	-	-	-	1 227.000
BASIC FUEL PRICE - 03/04/2019 (SA c/l)	736.283	726.823	754.809	760.960	755.213
PRESS RELEASE CONTRIBUTION TO BFP 03/04/2019 - 03/04/2019 (SA c/l)	723.170	714.170	783.630	791.030	778.128
UNIT OVER/(UNDER) RECOVERY - 03/04/2019 (SA c/l)	(13.113)	(12.653)	28.821	30.070	22.915
AVERAGE BASIC FUEL PRICE 29/03/2019 - 03/04/2019	740.528	730.695	759.162	765.624	759.094
AVERAGE UNIT OVER/(UNDER) RECOVERY 29/03/2019 - 03/04/2019	(96.633)	(98.050)	(17.532)	(17.344)	(22.966)

ANALYSIS MOVEMENT OF AVERAGE OVER/(UNDER) RECOVERY

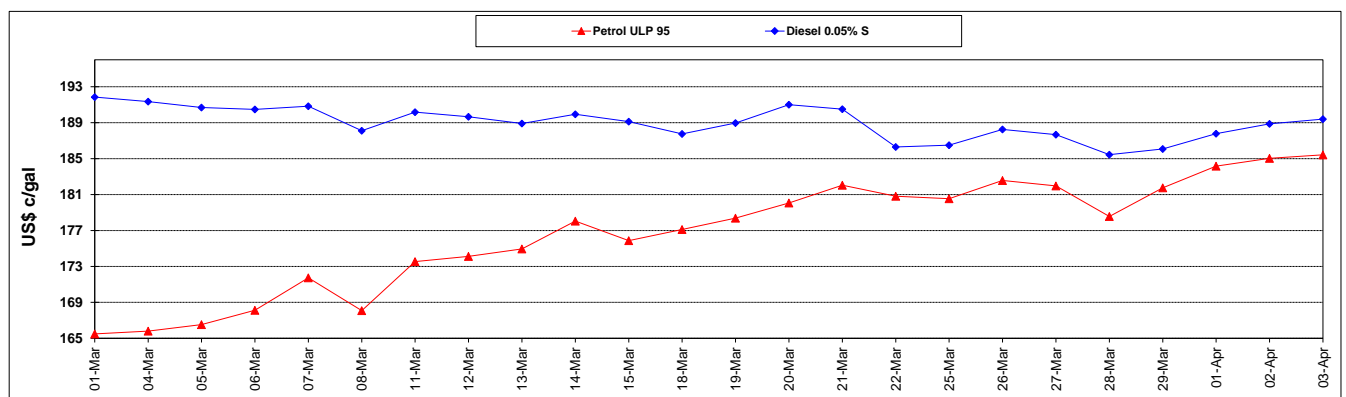
	PETROL 95	PETROL 93	DIESEL 0.05%	DIESEL 0.005%	ILL. PAR.
- MOVEMENT IN INTERNATIONAL PRODUCT PRICES	(101.185)	(102.542)	(22.199)	(22.050)	(27.632)
- MOVEMENT IN EXCHANGE RATE	4.552	4.492	4.667	4.706	4.666
AVERAGE UNIT OVER/(UNDER) RECOVERY 29/03/2019 - 03/04/2019	(96.633)	(98.050)	(17.532)	(17.344)	(22.966)

R/\$ EXCHANGE RATE - (R/\$14.1250 - 03/04/2019)

EXCHANGE RATE USED IN BASIC FUEL PRICE



INTERNATIONAL PRODUCT PRICES OF BASKET USED IN BASIC FUEL PRICE



BASIC FUEL PRICE IN SA CENTS PER LITRE

