

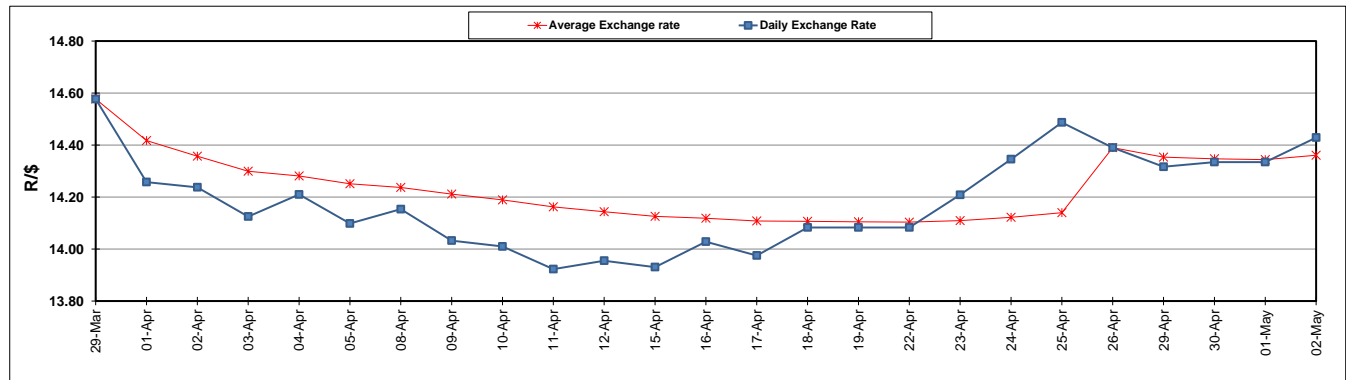
	PETROL 95 ULP	PETROL 93 ULP & LRP	DIESEL 0.05%	DIESEL 0.005%	ILL. PAR.
GAUTENG PUMP PRICE (SA c/l) AS FROM 01/05/2019	1 667.000	1 648.000	-	-	-
WHOLESALE PRICE (SA c/l) AS FROM 01/05/2019	-	-	1 488.120	1 494.520	965.678
SINGLE NATIONAL MAXIMUM RETAIL PRICE	-	-	-	-	1 231.000
BASIC FUEL PRICE - 02/05/2019 (SA c/l)	772.644	761.641	801.602	808.673	793.487
PRESS RELEASE CONTRIBUTION TO BFP 01/05/2019 - 02/05/2019 (SA c/l)	777.170	768.170	784.630	791.030	781.128
UNIT OVER/(UNDER) RECOVERY - 02/05/2019 (SA c/l)	4.526	6.529	(16.972)	(17.643)	(12.359)
AVERAGE BASIC FUEL PRICE 26/04/2019 - 02/05/2019	778.817	767.505	794.990	801.669	790.320
AVERAGE UNIT OVER/(UNDER) RECOVERY 26/04/2019 - 02/05/2019	(34.047)	(31.735)	(10.960)	(10.639)	(10.992)

ANALYSIS MOVEMENT OF AVERAGE OVER/(UNDER) RECOVERY

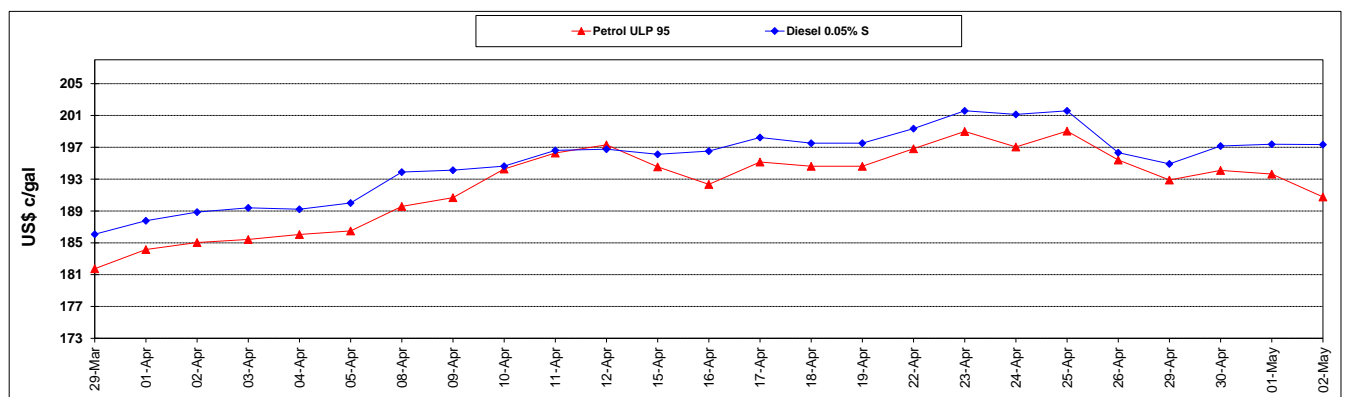
	PETROL 95	PETROL 93	DIESEL 0.05%	DIESEL 0.005%	ILL. PAR.
- MOVEMENT IN INTERNATIONAL PRODUCT PRICES	(22.073)	(19.935)	1.263	1.687	1.159
- MOVEMENT IN EXCHANGE RATE	(11.974)	(11.800)	(12.223)	(12.326)	(12.151)
AVERAGE UNIT OVER/(UNDER) RECOVERY 26/04/2019 - 02/05/2019	(34.047)	(31.735)	(10.960)	(10.639)	(10.992)

R/\$ EXCHANGE RATE - (R/\$14.4288 - 02/05/2019)

EXCHANGE RATE USED IN BASIC FUEL PRICE



INTERNATIONAL PRODUCT PRICES OF BASKET USED IN BASIC FUEL PRICE



BASIC FUEL PRICE IN SA CENTS PER LITRE

