

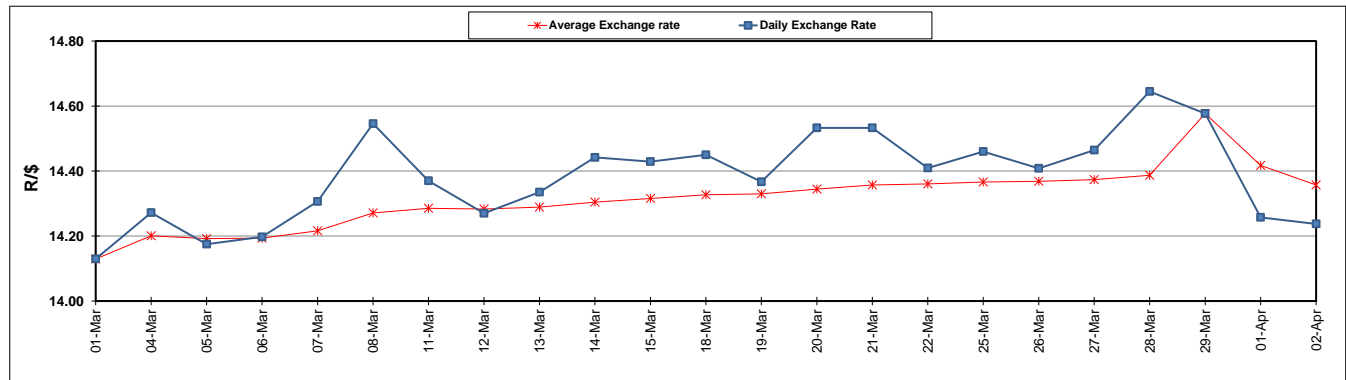
| | PETROL 95 ULP | PETROL 93 ULP & LRP | DIESEL 0.05% | DIESEL 0.005% | ILL. PAR. |
|--|---------------|---------------------|--------------|---------------|-----------|
| GAUTENG PUMP PRICE (SA c/l) AS FROM 03/04/2019 | 1 613.000 | 1 594.000 | - | - | - |
| WHOLESALE PRICE (SA c/l) AS FROM 03/04/2019 | - | - | 1 487.120 | 1 494.520 | 962.678 |
| SINGLE NATIONAL MAXIMUM RETAIL PRICE | - | - | - | - | 1 227.000 |
| BASIC FUEL PRICE - 29/03/2019 (SA c/l) | 740.608 | 728.714 | 758.733 | 765.335 | 758.693 |
| PRESS RELEASE CONTRIBUTION TO BFP 29/03/2019 - 02/04/2019 (SA c/l) | 617.470 | 605.470 | 727.630 | 734.030 | 722.128 |
| UNIT OVER/(UNDER) RECOVERY - 29/03/2019 (SA c/l) | (123.138) | (123.244) | (31.103) | (31.305) | (36.565) |
| AVERAGE BASIC FUEL PRICE 29/03/2019 - 02/04/2019 | 741.943 | 731.986 | 760.613 | 767.178 | 760.387 |
| AVERAGE UNIT OVER/(UNDER) RECOVERY 29/03/2019 - 02/04/2019 | (124.473) | (126.516) | (32.983) | (33.148) | (38.259) |

ANALYSIS MOVEMENT OF AVERAGE OVER/(UNDER) RECOVERY

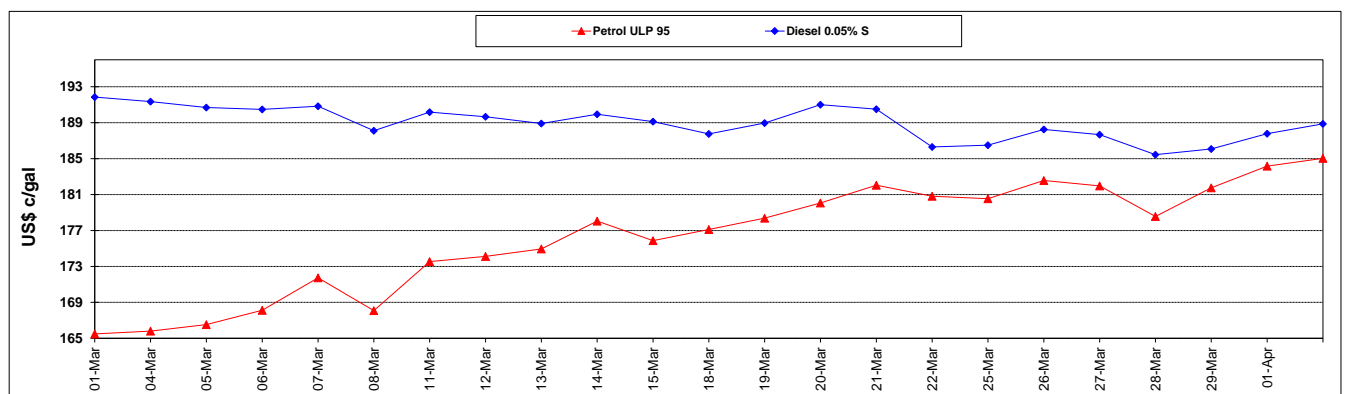
| | PETROL 95 | PETROL 93 | DIESEL 0.05% | DIESEL 0.005% | ILL. PAR. |
|--|-----------|-----------|--------------|---------------|-----------|
| - MOVEMENT IN INTERNATIONAL PRODUCT PRICES | (126.013) | (128.035) | (34.562) | (34.740) | (39.837) |
| - MOVEMENT IN EXCHANGE RATE | 1.540 | 1.519 | 1.579 | 1.592 | 1.578 |
| AVERAGE UNIT OVER/(UNDER) RECOVERY 29/03/2019 - 02/04/2019 | (124.473) | (126.516) | (32.983) | (33.148) | (38.259) |

R/\$ EXCHANGE RATE - (R/\$14.2374 - 02/04/2019)

EXCHANGE RATE USED IN BASIC FUEL PRICE



INTERNATIONAL PRODUCT PRICES OF BASKET USED IN BASIC FUEL PRICE



BASIC FUEL PRICE IN SA CENTS PER LITRE

