

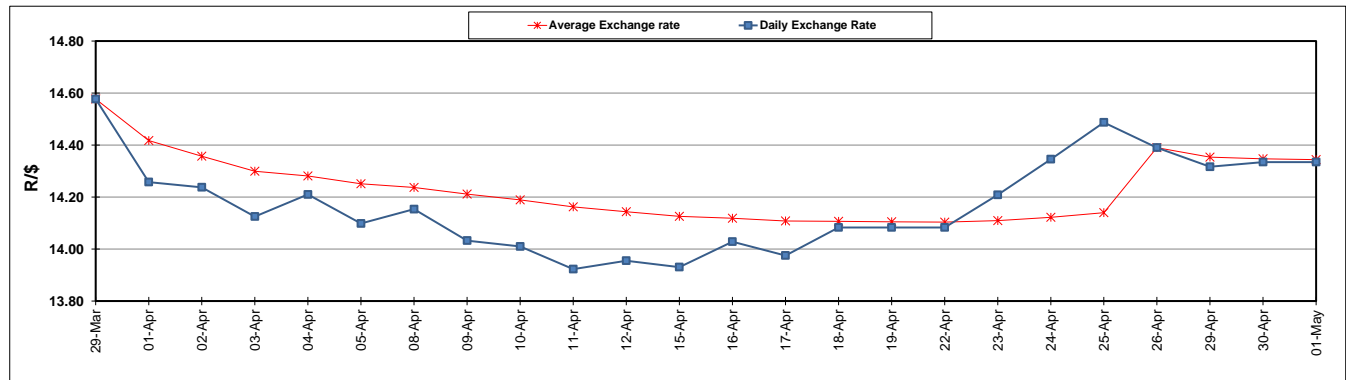
	PETROL 95 ULP	PETROL 93 ULP & LRP	DIESEL 0.05%	DIESEL 0.005%	ILL. PAR.
GAUTENG PUMP PRICE (SA c/l) AS FROM 01/05/2019	1 667.000	1 648.000	-	-	-
WHOLESALE PRICE (SA c/l) AS FROM 01/05/2019	-	-	1 488.120	1 494.520	965.678
SINGLE NATIONAL MAXIMUM RETAIL PRICE	-	-	-	-	1 231.000
BASIC FUEL PRICE - 01/05/2019 (SA c/l)	778.599	767.073	796.595	803.414	789.836
PRESS RELEASE CONTRIBUTION TO BFP 01/05/2019 - 01/05/2019 (SA c/l)	777.170	768.170	784.630	791.030	781.128
UNIT OVER/(UNDER) RECOVERY - 01/05/2019 (SA c/l)	(1.429)	1.097	(11.965)	(12.384)	(8.708)
AVERAGE BASIC FUEL PRICE 26/04/2019 - 01/05/2019	780.360	768.971	793.337	799.918	789.528
AVERAGE UNIT OVER/(UNDER) RECOVERY 26/04/2019 - 01/05/2019	(43.690)	(41.301)	(9.457)	(8.888)	(10.650)

ANALYSIS MOVEMENT OF AVERAGE OVER/(UNDER) RECOVERY

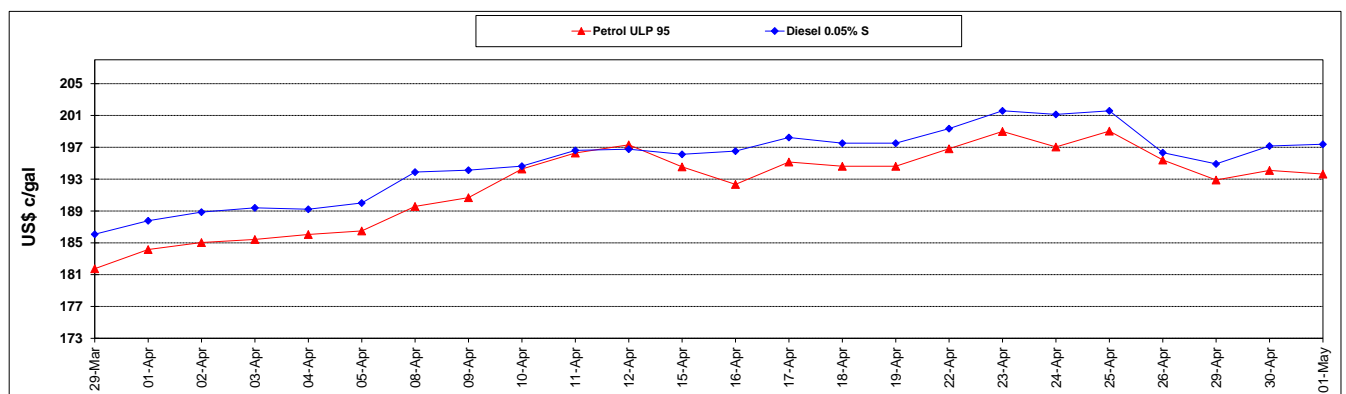
	PETROL 95	PETROL 93	DIESEL 0.05%	DIESEL 0.005%	ILL. PAR.
- MOVEMENT IN INTERNATIONAL PRODUCT PRICES	(32.603)	(30.375)	1.815	2.477	0.568
- MOVEMENT IN EXCHANGE RATE	(11.087)	(10.926)	(11.272)	(11.365)	(11.218)
AVERAGE UNIT OVER/(UNDER) RECOVERY 26/04/2019 - 01/05/2019	(43.690)	(41.301)	(9.457)	(8.888)	(10.650)

R/\$ EXCHANGE RATE - (R/\$14.3345 - 01/05/2019)

EXCHANGE RATE USED IN BASIC FUEL PRICE



INTERNATIONAL PRODUCT PRICES OF BASKET USED IN BASIC FUEL PRICE



BASIC FUEL PRICE IN SA CENTS PER LITRE

