

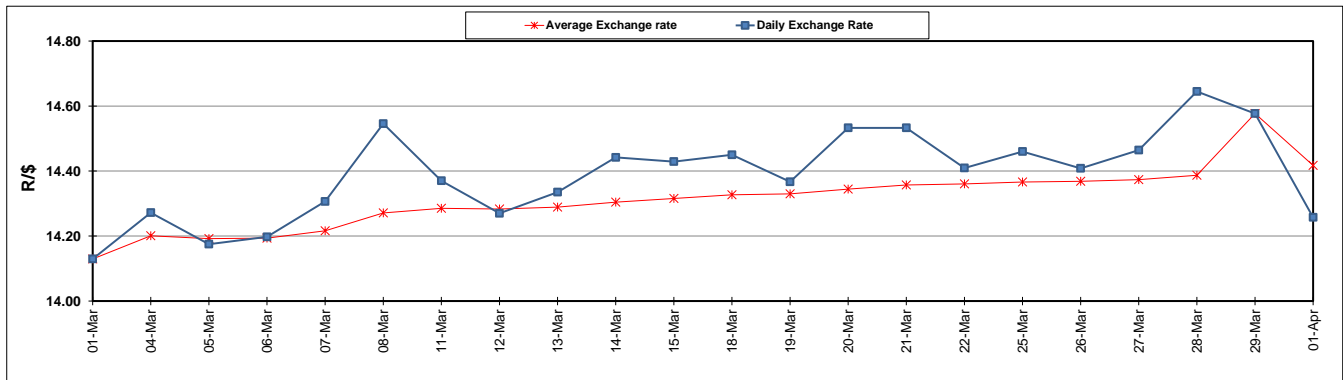
	PETROL 95 ULP	PETROL 93 ULP & LRP	DIESEL 0.05%	DIESEL 0.005%	ILL. PAR.
GAUTENG PUMP PRICE (SA c/l) AS FROM 03/04/2019	1 613.000	1 594.000	-	-	-
WHOLESALE PRICE (SA c/l) AS FROM 03/04/2019	-	-	1 487.120	1 494.520	962.678
SINGLE NATIONAL MAXIMUM RETAIL PRICE	-	-	-	-	1 227.000
BASIC FUEL PRICE - 29/03/2019 (SA c/l)	738.343	729.039	755.645	761.493	755.503
PRESS RELEASE CONTRIBUTION TO BFP 29/03/2019 - 01/04/2019 (SA c/l)	617.470	605.470	727.630	734.030	722.128
UNIT OVER/(UNDER) RECOVERY - 29/03/2019 (SA c/l)	(120.873)	(123.569)	(28.015)	(27.463)	(33.375)
AVERAGE BASIC FUEL PRICE 29/03/2019 - 01/04/2019	742.611	733.622	761.554	768.100	761.235
AVERAGE UNIT OVER/(UNDER) RECOVERY 29/03/2019 - 01/04/2019	(125.141)	(128.152)	(33.924)	(34.070)	(39.107)

ANALYSIS MOVEMENT OF AVERAGE OVER/(UNDER) RECOVERY

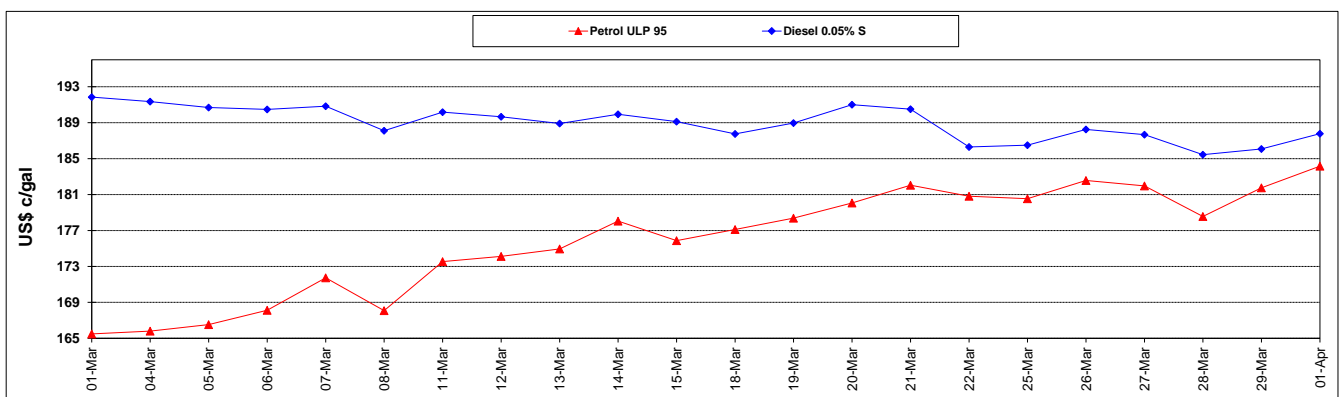
	PETROL 95	PETROL 93	DIESEL 0.05%	DIESEL 0.005%	ILL. PAR.
- MOVEMENT IN INTERNATIONAL PRODUCT PRICES	(123.585)	(126.615)	(32.329)	(32.461)	(37.512)
- MOVEMENT IN EXCHANGE RATE	(1.556)	(1.537)	(1.595)	(1.609)	(1.595)
AVERAGE UNIT OVER/(UNDER) RECOVERY 29/03/2019 - 01/04/2019	(125.141)	(128.152)	(33.924)	(34.070)	(39.107)

R/\$ EXCHANGE RATE - (R/\$14.2575 - 01/04/2019)

EXCHANGE RATE USED IN BASIC FUEL PRICE



INTERNATIONAL PRODUCT PRICES OF BASKET USED IN BASIC FUEL PRICE



BASIC FUEL PRICE IN SA CENTS PER LITRE

