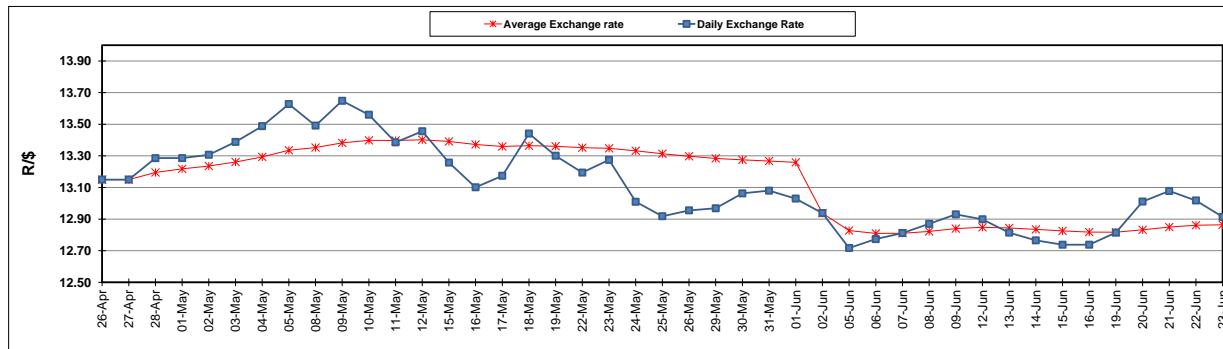


	PETROL 95 ULP	PETROL 93 ULP & LRP	DIESEL 0.05%	DIESEL 0.005%	ILL. PAR.
GAUTENG PUMP PRICE (SA c/l) AS FROM 07/06/2017	1 354.000	1 332.000	-	-	-
WHOLESALE PRICE (SA c/l) AS FROM 07/06/2017	-	-	1 157.330	1 161.730	714.088
SINGLE NATIONAL MAXIMUM RETAIL PRICE	-	-	-	-	917.000
BASIC FUEL 23/06/2017 (SA c/l)	499.393	483.723	477.460	481.884	479.698
PRESS RELEASE CONTRIBUTION TO BFP 07/06/2017 - 23/06/2017 (SA c/l)	572.670	560.670	545.630	550.030	543.128
UNIT OVER/(UNDER) RECOVERY (SA c/l) - 23/06/2017	73.277	76.947	68.170	68.146	63.430
AVERAGE BASIC FUEL PRICE 02/06/2017 - 23/06/2017	510.163	497.725	489.784	493.607	489.604
AVERAGE UNIT OVER/(UNDER) RECOVERY 02/06/2017- 23/06/2017	67.195	67.633	60.158	60.735	57.649

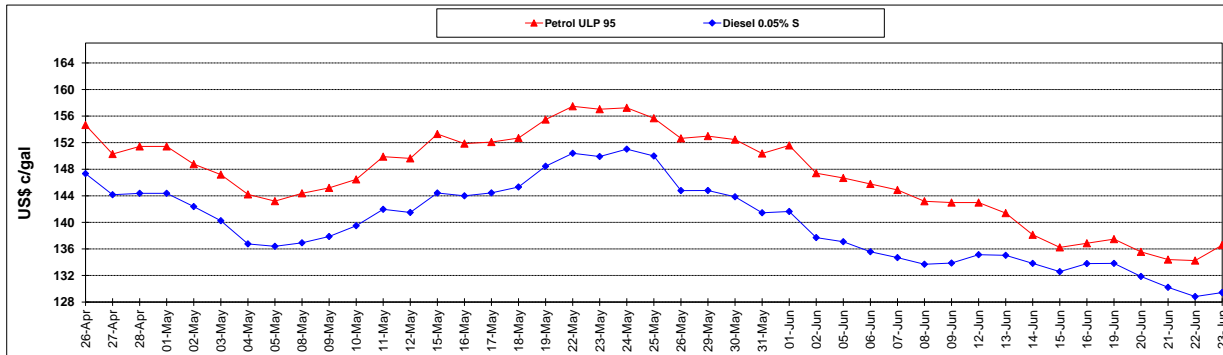
ANALYSIS MOVEMENT OF AVERAGE OVER/(UNDER) RECOVERY					
	PETROL 95	PETROL 93	DIESEL 0.05%	DIESEL 0.005%	ILL. PAR.
- MOVEMENT IN INTERNATIONAL PRODUCT PRICES	64.590	65.091	57.658	58.215	55.149
- MOVEMENT IN EXCHANGE RATE	2.605	2.542	2.501	2.521	2.500
AVERAGE UNIT OVER/(UNDER) RECOVERY 02/06/2017 - 23/06/2017	67.195	67.633	60.158	60.735	57.649

R/\$ EXCHANGE RATE - (R/\$ 12.914 - 23/06/2017)

### EXCHANGE RATE USED IN BASIC FUEL PRICE



### INTERNATIONAL PRODUCT PRICES OF BASKET USED IN BASIC FUEL PRICE



### BASIC FUEL PRICE IN SA CENTS PER LITRE

