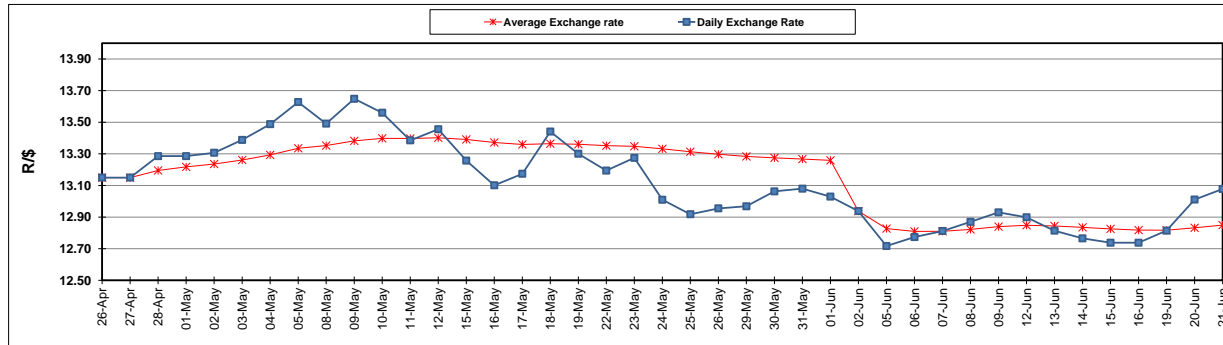


	PETROL 95 ULP	PETROL 93 ULP & LRP	DIESEL 0.05%	DIESEL 0.005%	ILL. PAR.
GAUTENG PUMP PRICE (SA c/l) AS FROM 07/06/2017	1 354.000	1 332.000	-	-	-
WHOLESALE PRICE (SA c/l) AS FROM 07/06/2017	-	-	1 157.330	1 161.730	714.088
SINGLE NATIONAL MAXIMUM RETAIL PRICE	-	-	-	-	917.000
BASIC FUEL 21/06/2017 (SA c/l)	498.024	486.185	486.160	490.176	487.936
PRESS RELEASE CONTRIBUTION TO BFP 07/06/2017 - 21/06/2017 (SA c/l)	572.670	560.670	545.630	550.030	543.128
UNIT OVER/(UNDER) RECOVERY (SA c/l) - 21/06/2017	74.646	74.485	59.470	59.854	55.192
AVERAGE BASIC FUEL PRICE 02/06/2017 - 21/06/2017	511.996	499.826	491.424	495.173	490.905
AVERAGE UNIT OVER/(UNDER) RECOVERY 02/06/2017 - 21/06/2017	66.031	66.202	59.134	59.785	56.938

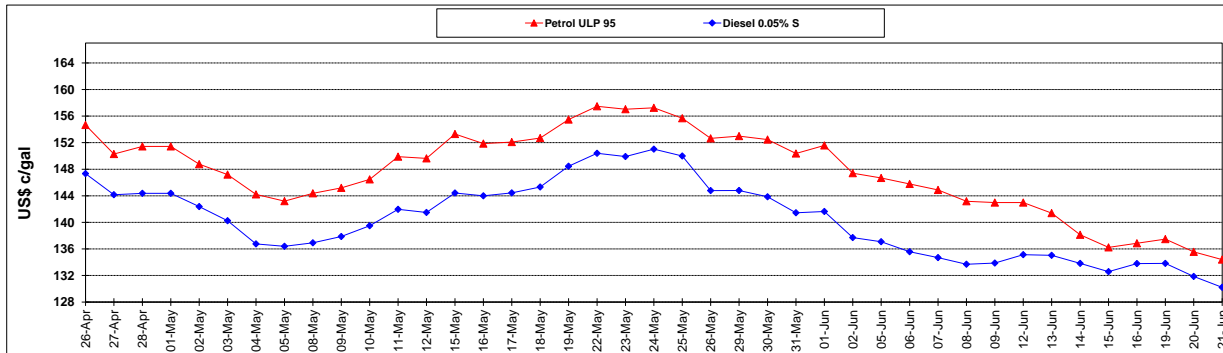
ANALYSIS MOVEMENT OF AVERAGE OVER/(UNDER) RECOVERY					
	PETROL 95	PETROL 93	DIESEL 0.05%	DIESEL 0.005%	ILL. PAR.
- MOVEMENT IN INTERNATIONAL PRODUCT PRICES	62.835	63.081	56.068	56.695	53.873
- MOVEMENT IN EXCHANGE RATE	3.196	3.120	3.067	3.091	3.064
AVERAGE UNIT OVER/(UNDER) RECOVERY 02/06/2017 - 21/06/2017	66.031	66.202	59.134	59.785	56.938

R/\$ EXCHANGE RATE - (R/\$ 13.0780 - 21/06/2017)

EXCHANGE RATE USED IN BASIC FUEL PRICE



INTERNATIONAL PRODUCT PRICES OF BASKET USED IN BASIC FUEL PRICE



BASIC FUEL PRICE IN SA CENTS PER LITRE

