

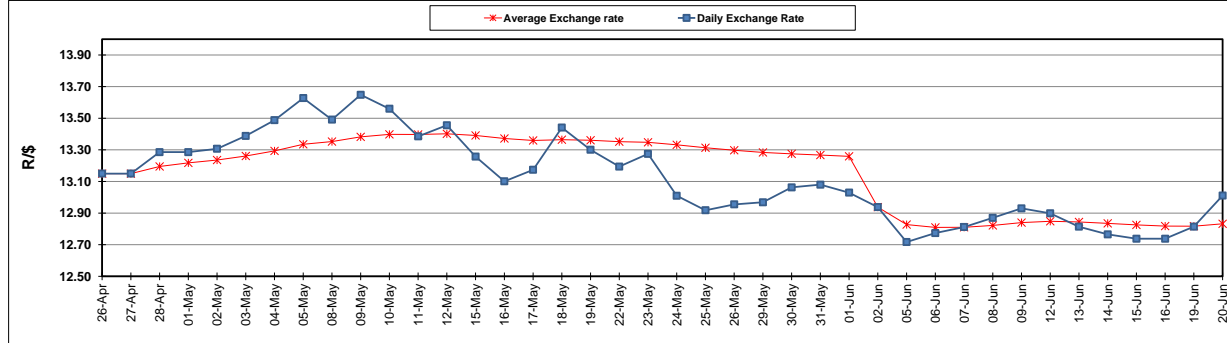
	PETROL 95 ULP	PETROL 93 ULP & LRP	DIESEL 0.05%	DIESEL 0.005%	ILL. PAR.
GAUTENG PUMP PRICE (SA c/l) AS FROM 07/06/2017	1 354.000	1 332.000	-	-	-
WHOLESALE PRICE (SA c/l) AS FROM 07/06/2017	-	-	1 157.330	1 161.730	714.088
SINGLE NATIONAL MAXIMUM RETAIL PRICE	-	-	-	-	917.000
BASIC FUEL 20/06/2017 (SA c/l)	499.581	488.618	489.380	493.007	489.727
PRESS RELEASE CONTRIBUTION TO BFP 07/06/2017 - 20/06/2017 (SA c/l)	572.670	560.670	545.630	550.030	543.128
UNIT OVER/(UNDER) RECOVERY (SA c/l) - 20/06/2017	73.089	72.052	56.250	57.023	53.401
AVERAGE BASIC FUEL PRICE 02/06/2017 - 20/06/2017	513.071	500.875	491.829	495.558	491.133
AVERAGE UNIT OVER/(UNDER) RECOVERY 02/06/2017 - 20/06/2017	65.369	65.564	59.109	59.780	57.072

### ANALYSIS MOVEMENT OF AVERAGE OVER/(UNDER) RECOVERY

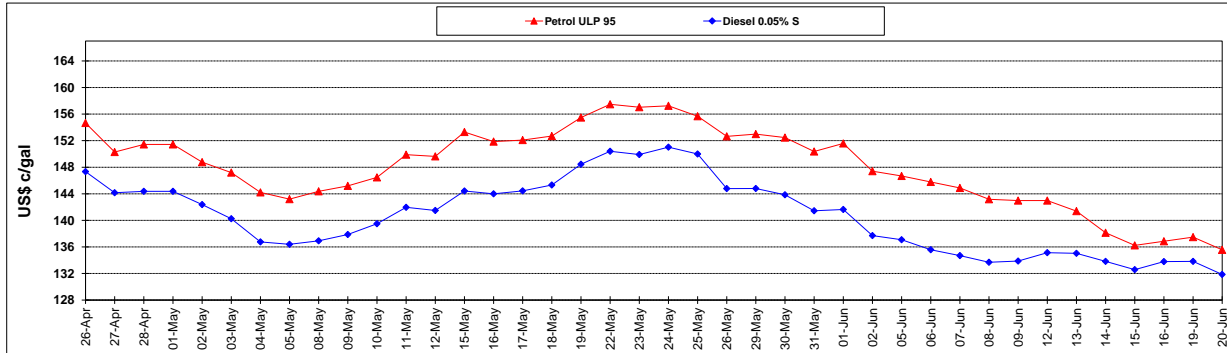
	PETROL 95	PETROL 93	DIESEL 0.05%	DIESEL 0.005%	ILL. PAR.
- MOVEMENT IN INTERNATIONAL PRODUCT PRICES	61.462	61.751	55.364	56.007	53.333
- MOVEMENT IN EXCHANGE RATE	3.906	3.813	3.745	3.773	3.739
AVERAGE UNIT OVER/(UNDER) RECOVERY 02/06/2017 - 20/06/2017	65.369	65.564	59.109	59.780	57.072

R/\$ EXCHANGE RATE - (R/\$ 13.0108 - 20/06/2017)

### EXCHANGE RATE USED IN BASIC FUEL PRICE



### INTERNATIONAL PRODUCT PRICES OF BASKET USED IN BASIC FUEL PRICE



### BASIC FUEL PRICE IN SA CENTS PER LITRE

