

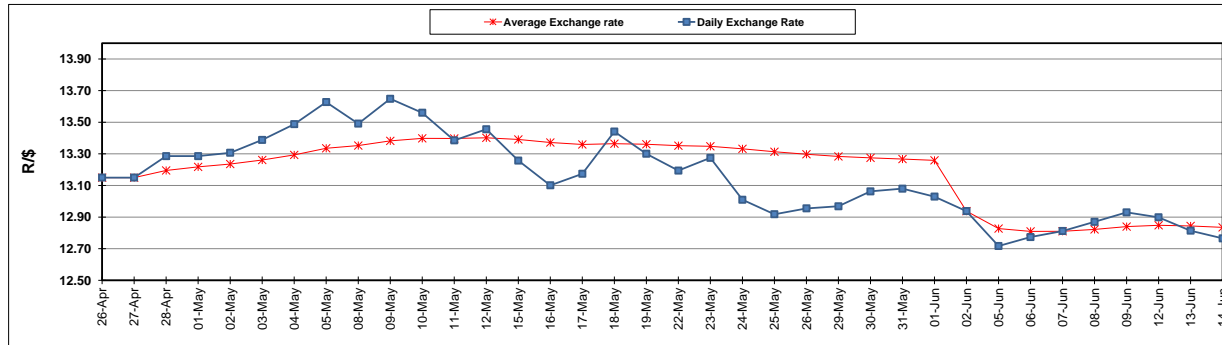
	PETROL 95 ULP	PETROL 93 ULP & LRP	DIESEL 0.05%	DIESEL 0.005%	ILL. PAR.
GAUTENG PUMP PRICE (SA c/l) AS FROM 07/06/2017	1 354.000	1 332.000	-	-	-
WHOLESALE PRICE (SA c/l) AS FROM 07/06/2017	-	-	1 157.330	1 161.730	714.088
SINGLE NATIONAL MAXIMUM RETAIL PRICE	-	-	-	-	917.000
BASIC FUEL PRICE - 14/06/2017 (SA c/l)	498.992	486.403	486.945	490.518	485.160
PRESS RELEASE CONTRIBUTION TO BFP 07/06/2017 - 14/06/2017 (SA c/l)	572.670	560.670	545.630	550.030	543.128
UNIT OVER/(UNDER) RECOVERY (SA c/l) - 14/06/2017	73.678	74.267	58.685	59.512	57.968
AVERAGE BASIC FUEL PRICE 02/06/2017 - 14/06/2017	520.722	508.163	494.218	498.096	493.396
AVERAGE UNIT OVER/(UNDER) RECOVERY 02/06/2017- 14/06/2017	60.282	60.841	59.078	59.601	57.065

ANALYSIS MOVEMENT OF AVERAGE OVER/(UNDER) RECOVERY

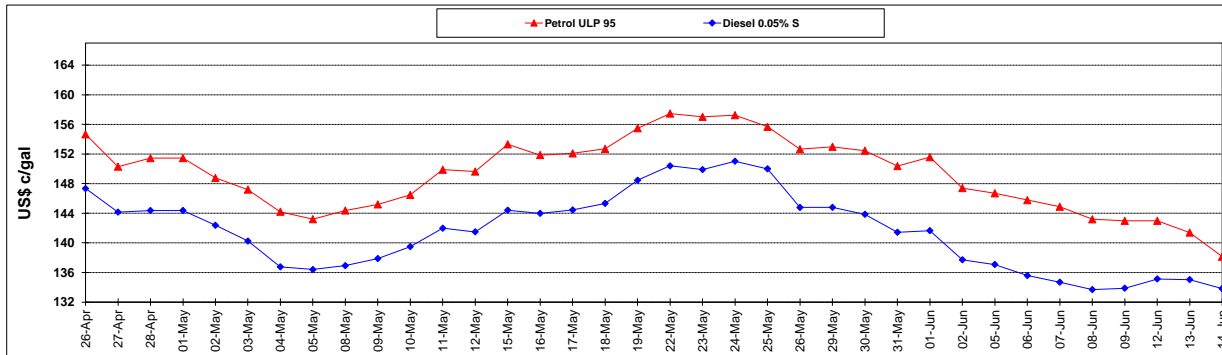
	PETROL 95	PETROL 93	DIESEL 0.05%	DIESEL 0.005%	ILL. PAR.
- MOVEMENT IN INTERNATIONAL PRODUCT PRICES	56.443	57.095	55.436	55.930	53.429
- MOVEMENT IN EXCHANGE RATE	3.838	3.745	3.643	3.671	3.636
AVERAGE UNIT OVER/(UNDER) RECOVERY 02/06/2017 - 14/06/2017	60.282	60.841	59.078	59.601	57.065

R/\$ EXCHANGE RATE - (R/\$ 12.7655 - 14/06/2017)

EXCHANGE RATE USED IN BASIC FUEL PRICE



INTERNATIONAL PRODUCT PRICES OF BASKET USED IN BASIC FUEL PRICE



BASIC FUEL PRICE IN SA CENTS PER LITRE

