

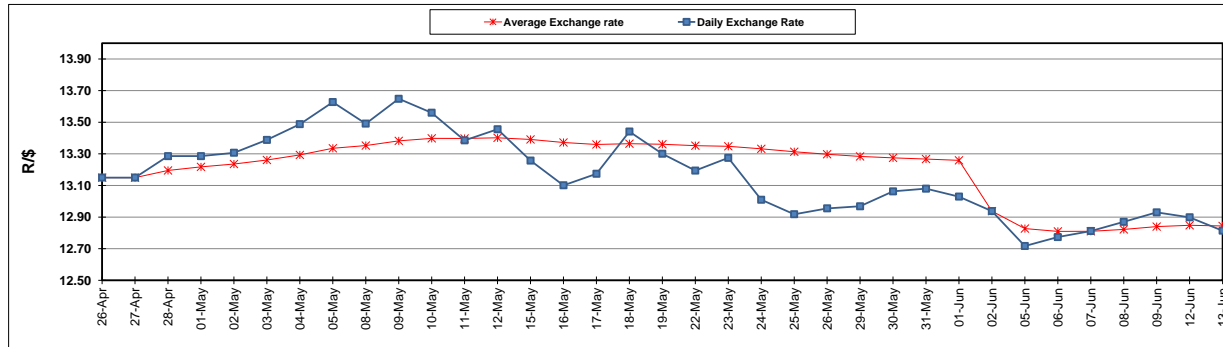
	PETROL 95 ULP	PETROL 93 ULP & LRP	DIESEL 0.05%	DIESEL 0.005%	ILL. PAR.
GAUTENG PUMP PRICE (SA c/l) AS FROM 07/06/2017	1 354.000	1 332.000	-	-	-
WHOLESALE PRICE (SA c/l) AS FROM 07/06/2017	-	-	1 157.330	1 161.730	714.088
SINGLE NATIONAL MAXIMUM RETAIL PRICE	-	-	-	-	917.000
BASIC FUEL PRICE - 13/06/2017 (SA c/l)	511.952	498.876	492.909	496.547	491.504
PRESS RELEASE CONTRIBUTION TO BFP 07/06/2017 - 13/06/2017 (SA c/l)	572.670	560.670	545.630	550.030	543.128
UNIT OVER/(UNDER) RECOVERY (SA c/l) - 13/06/2017	60.718	61.794	52.721	53.483	51.624
AVERAGE BASIC FUEL PRICE 02/06/2017 - 13/06/2017	523.438	510.883	495.137	499.061	494.425
AVERAGE UNIT OVER/(UNDER) RECOVERY 02/06/2017- 13/06/2017	58.607	59.162	59.118	59.594	56.953

ANALYSIS MOVEMENT OF AVERAGE OVER/(UNDER) RECOVERY

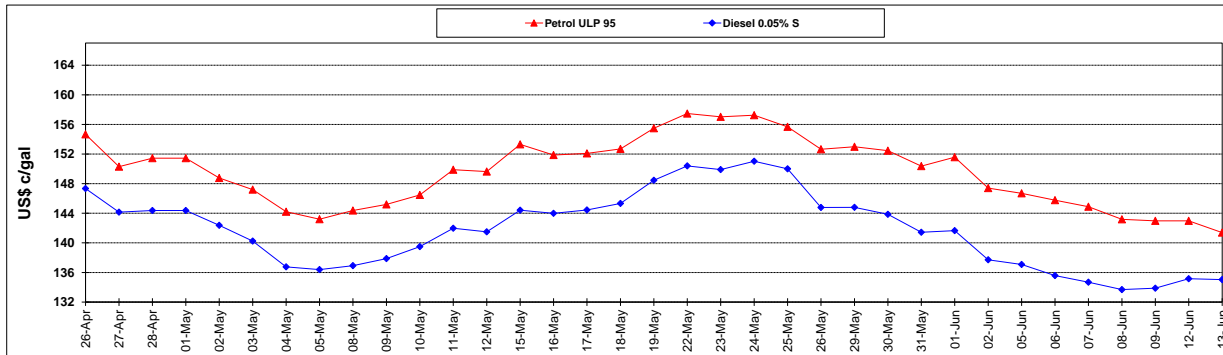
	PETROL 95	PETROL 93	DIESEL 0.05%	DIESEL 0.005%	ILL. PAR.
- MOVEMENT IN INTERNATIONAL PRODUCT PRICES	55.106	55.745	55.807	56.256	53.646
- MOVEMENT IN EXCHANGE RATE	3.501	3.417	3.311	3.338	3.307
AVERAGE UNIT OVER/(UNDER) RECOVERY 02/06/2017 - 13/06/2017	58.607	59.162	59.118	59.594	56.953

R/\$ EXCHANGE RATE - (R/\$ 12.8140 - 13/06/2017)

EXCHANGE RATE USED IN BASIC FUEL PRICE



INTERNATIONAL PRODUCT PRICES OF BASKET USED IN BASIC FUEL PRICE



BASIC FUEL PRICE IN SA CENTS PER LITRE

