

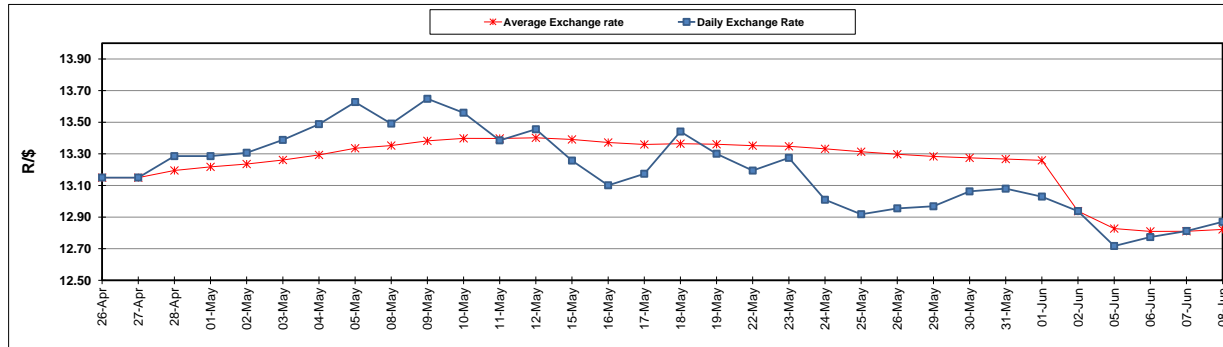
	PETROL 95 ULP	PETROL 93 ULP & LRP	DIESEL 0.05%	DIESEL 0.005%	ILL. PAR.
GAUTENG PUMP PRICE (SA c/l) AS FROM 07/06/2017	1 354.000	1 332.000	-	-	-
WHOLESALE PRICE (SA c/l) AS FROM 07/06/2017	-	-	1 157.330	1 161.730	714.088
SINGLE NATIONAL MAXIMUM RETAIL PRICE	-	-	-	-	917.000
BASIC FUEL PRICE - 08/06/2017 (SA c/l)	520.293	507.367	490.438	494.586	489.000
PRESS RELEASE CONTRIBUTION TO BFP 07/06/2017 - 08/06/2017 (SA c/l)	572.670	560.670	545.630	550.030	543.128
UNIT OVER/(UNDER) RECOVERY (SA c/l) - 08/06/2017	52.377	53.303	55.192	55.444	54.128
AVERAGE BASIC FUEL PRICE 02/06/2017 - 08/06/2017	526.570	514.356	495.665	499.663	495.180
AVERAGE UNIT OVER/(UNDER) RECOVERY 02/06/2017- 08/06/2017	61.100	61.314	63.765	64.167	61.148

### ANALYSIS MOVEMENT OF AVERAGE OVER/(UNDER) RECOVERY

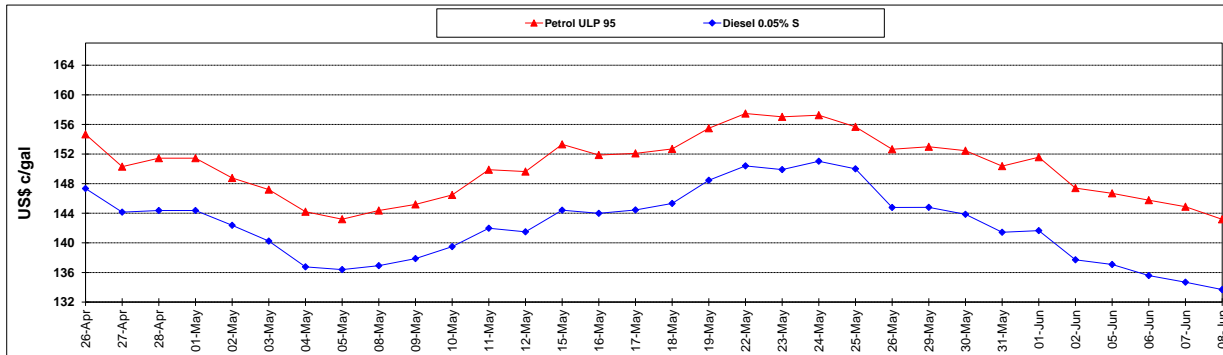
	PETROL 95	PETROL 93	DIESEL 0.05%	DIESEL 0.005%	ILL. PAR.
- MOVEMENT IN INTERNATIONAL PRODUCT PRICES	61.515	61.719	64.155	64.561	61.538
- MOVEMENT IN EXCHANGE RATE	(0.415)	(0.405)	(0.390)	(0.394)	(0.390)
AVERAGE UNIT OVER/(UNDER) RECOVERY 02/06/2017 - 08/06/2017	61.100	61.314	63.765	64.167	61.148

R/\$ EXCHANGE RATE - (R/\$ 12.8700 - 08/06/2017)

### EXCHANGE RATE USED IN BASIC FUEL PRICE



### INTERNATIONAL PRODUCT PRICES OF BASKET USED IN BASIC FUEL PRICE



### BASIC FUEL PRICE IN SA CENTS PER LITRE

