

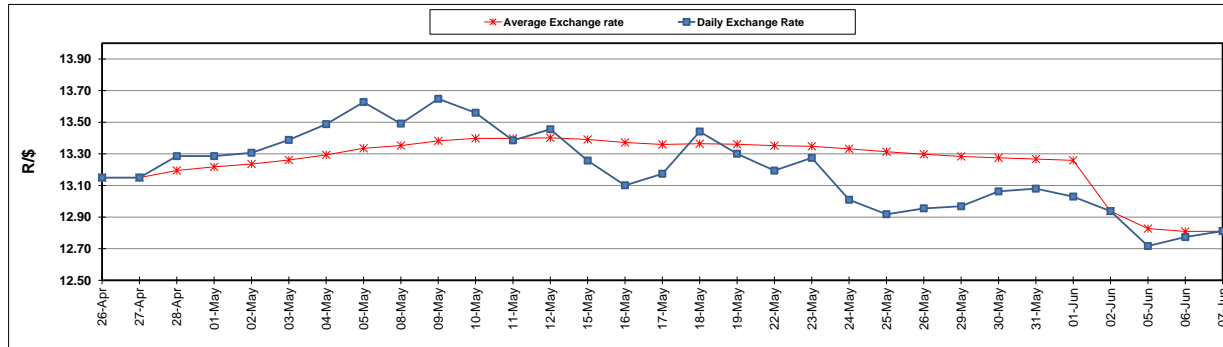
	PETROL 95 ULP	PETROL 93 ULP & LRP	DIESEL 0.05%	DIESEL 0.005%	ILL. PAR.
GAUTENG PUMP PRICE (SA c/l) AS FROM 07/06/2017	1 354.000	1 332.000	-	-	-
WHOLESALE PRICE (SA c/l) AS FROM 07/06/2017	-	-	1 157.330	1 161.730	714.088
SINGLE NATIONAL MAXIMUM RETAIL PRICE	-	-	-	-	917.000
BASIC FUEL PRICE - 07/06/2017 (SA c/l)	523.771	510.386	491.668	495.798	490.236
PRESS RELEASE CONTRIBUTION TO BFP 07/06/2017 - 07/06/2017 (SA c/l)	572.670	560.670	545.630	550.030	543.128
UNIT OVER/(UNDER) RECOVERY (SA c/l) - 07/06/2017	48.899	50.284	53.962	54.232	52.892
AVERAGE BASIC FUEL PRICE 02/06/2017 - 07/06/2017	528.140	516.103	496.972	500.932	496.725
AVERAGE UNIT OVER/(UNDER) RECOVERY 02/06/2017- 07/06/2017	63.280	63.317	65.909	66.348	62.903

ANALYSIS MOVEMENT OF AVERAGE OVER/(UNDER) RECOVERY

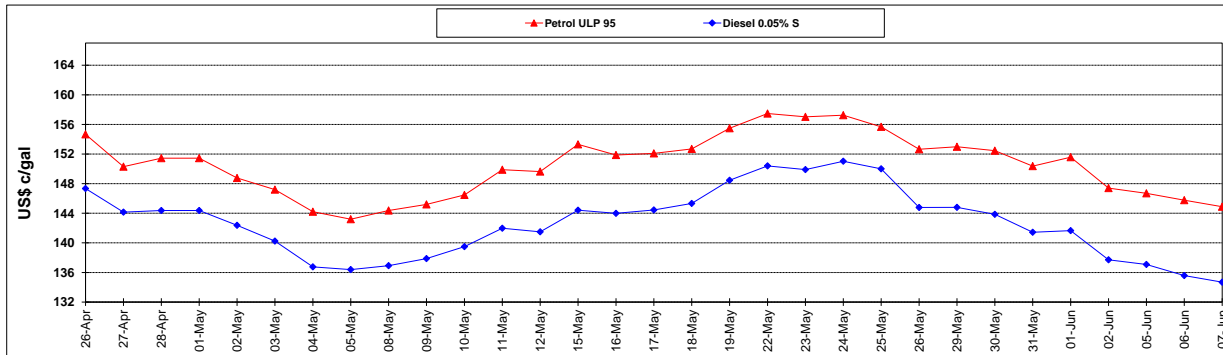
	PETROL 95	PETROL 93	DIESEL 0.05%	DIESEL 0.005%	ILL. PAR.
- MOVEMENT IN INTERNATIONAL PRODUCT PRICES	63.206	63.244	65.838	66.278	62.833
- MOVEMENT IN EXCHANGE RATE	0.074	0.073	0.070	0.070	0.070
AVERAGE UNIT OVER/(UNDER) RECOVERY 02/06/2017 - 07/06/2017	63.280	63.317	65.909	66.348	62.903

R/\$ EXCHANGE RATE - (R/\$ 12.8120 - 07/06/2017)

EXCHANGE RATE USED IN BASIC FUEL PRICE



INTERNATIONAL PRODUCT PRICES OF BASKET USED IN BASIC FUEL PRICE



BASIC FUEL PRICE IN SA CENTS PER LITRE

