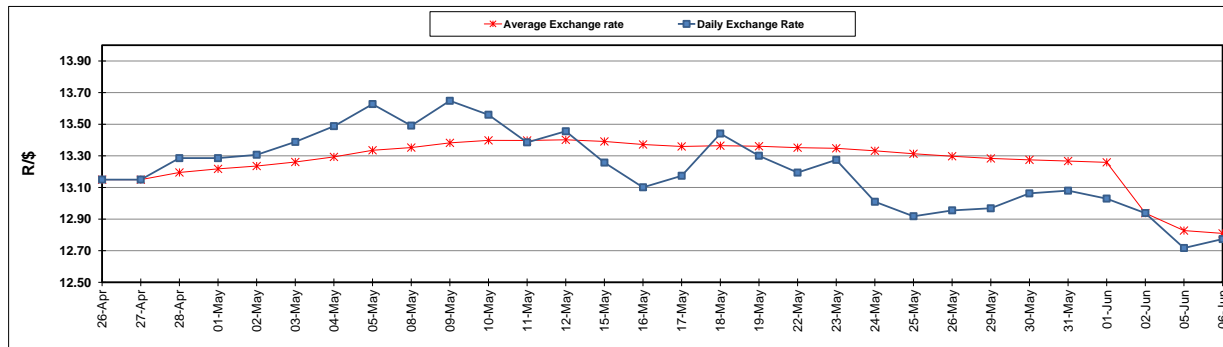


	PETROL 95 ULP	PETROL 93 ULP & LRP	DIESEL 0.05%	DIESEL 0.005%	ILL. PAR.
GAUTENG PUMP PRICE (SA c/l) AS FROM 07/06/2017	1 354.000	1 332.000	-	-	-
WHOLESALE PRICE (SA c/l) AS FROM 07/06/2017	-	-	1 157.330	1 161.730	714.088
SINGLE NATIONAL MAXIMUM RETAIL PRICE	-	-	-	-	917.000
BASIC FUEL PRICE - 06/06/2017 (SA c/l)	525.251	513.842	493.258	497.246	493.059
PRESS RELEASE CONTRIBUTION TO BFP 02/06/2017 - 06/06/2017 (SA c/l)	597.670	585.670	568.630	573.030	565.128
UNIT OVER/(UNDER) RECOVERY (SA c/l) - 06/06/2017	72.419	71.828	75.372	75.784	72.069
AVERAGE BASIC FUEL PRICE 02/06/2017 - 06/06/2017	529.596	518.009	498.739	502.643	498.888
AVERAGE UNIT OVER/(UNDER) RECOVERY 02/06/2017- 06/06/2017	68.074	67.661	69.891	70.387	66.240

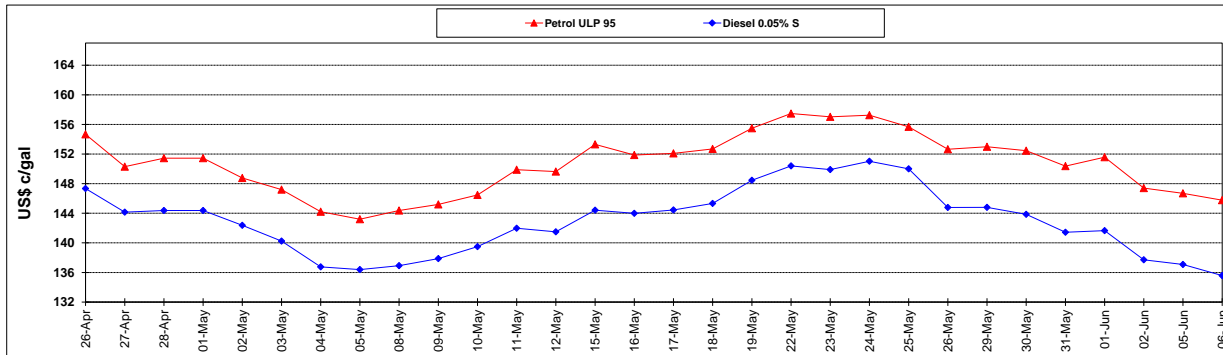
ANALYSIS MOVEMENT OF AVERAGE OVER/(UNDER) RECOVERY					
	PETROL 95	PETROL 93	DIESEL 0.05%	DIESEL 0.005%	ILL. PAR.
- MOVEMENT IN INTERNATIONAL PRODUCT PRICES	49.502	49.496	52.401	52.760	48.745
- MOVEMENT IN EXCHANGE RATE	18.572	18.165	17.490	17.627	17.495
AVERAGE UNIT OVER/(UNDER) RECOVERY 02/06/2017 - 06/06/2017	68.074	67.661	69.891	70.387	66.240

R/\$ EXCHANGE RATE - (R/\$ 12.7738 - 06/06/2017)

EXCHANGE RATE USED IN BASIC FUEL PRICE



INTERNATIONAL PRODUCT PRICES OF BASKET USED IN BASIC FUEL PRICE



BASIC FUEL PRICE IN SA CENTS PER LITRE

