

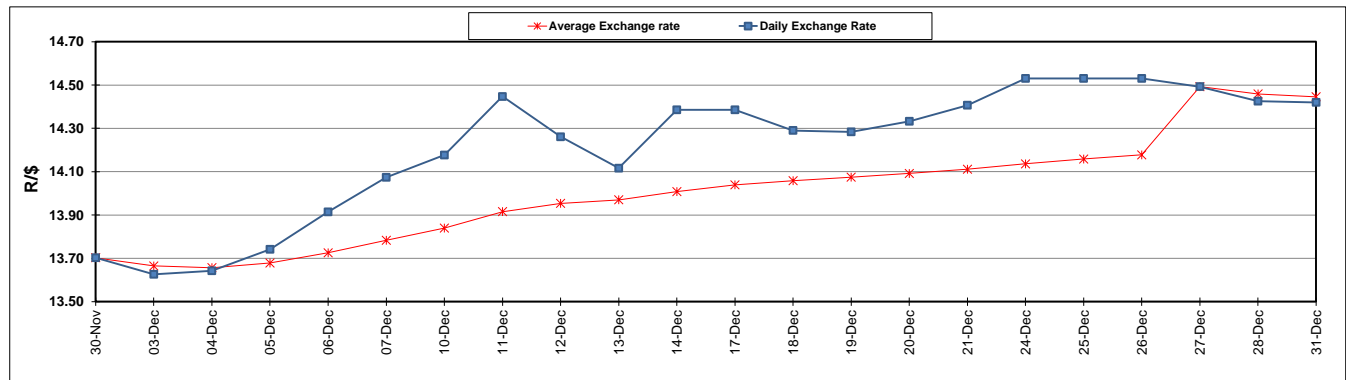
	PETROL 95 ULP	PETROL 93 ULP & LRP	DIESEL 0.05%	DIESEL 0.005%	ILL. PAR.
GAUTENG PUMP PRICE (SA c/l) AS FROM 05/12/2018	1 401.000	1 379.000	-	-	-
WHOLESALE PRICE (SA c/l) AS FROM 05/12/2018	-	-	1 313.420	1 316.820	828.678
SINGLE NATIONAL MAXIMUM RETAIL PRICE	-	-	-	-	1 067.000
BASIC FUEL PRICE - 31/12/2018 (SA c/l)	532.468	519.459	605.330	609.597	627.262
PRESS RELEASE CONTRIBUTION TO BFP 27/12/2018 - 31/12/2018 (SA c/l)	637.550	624.550	767.630	773.030	774.128
UNIT OVER/(UNDER) RECOVERY - 31/12/2018 (SA c/l)	105.082	105.091	162.300	163.433	146.866
AVERAGE BASIC FUEL PRICE 27/12/2018 - 31/12/2018	535.105	522.786	610.461	614.668	631.520
AVERAGE UNIT OVER/(UNDER) RECOVERY 27/12/2018 - 31/12/2018	102.445	101.764	157.169	158.362	142.608

ANALYSIS MOVEMENT OF AVERAGE OVER/(UNDER) RECOVERY

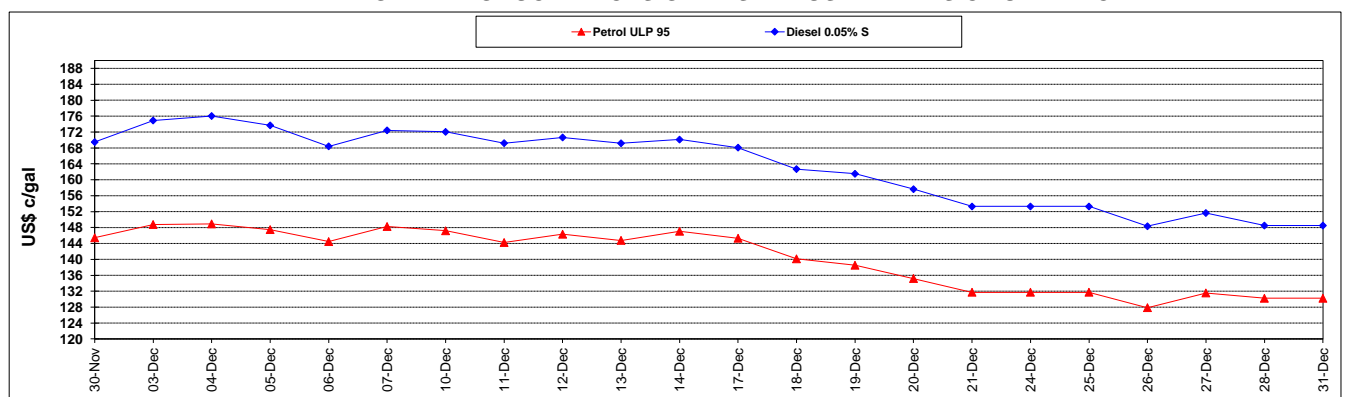
	PETROL 95	PETROL 93	DIESEL 0.05%	DIESEL 0.005%	ILL. PAR.
- MOVEMENT IN INTERNATIONAL PRODUCT PRICES	112.380	111.470	168.503	169.774	154.333
- MOVEMENT IN EXCHANGE RATE	(9.935)	(9.706)	(11.334)	(11.412)	(11.725)
AVERAGE UNIT OVER/(UNDER) RECOVERY 27/12/2018 - 31/12/2018	102.445	101.764	157.169	158.362	142.608

R/\$ EXCHANGE RATE - (R/\$14.4200 - 31/12/2018)

EXCHANGE RATE USED IN BASIC FUEL PRICE



INTERNATIONAL PRODUCT PRICES OF BASKET USED IN BASIC FUEL PRICE



BASIC FUEL PRICE IN SA CENTS PER LITRE

