

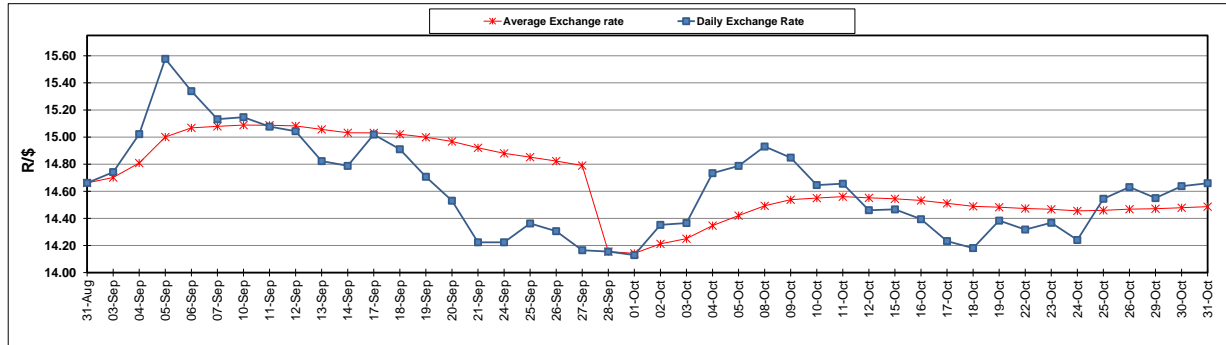
	PETROL 95 ULP	PETROL 93 ULP & LRP	DIESEL 0.05%	DIESEL 0.005%	ILL. PAR.
GAUTENG PUMP PRICE (SA c/l) AS FROM 03/10/2018	1 708.000	1 685.000	-	-	-
WHOLESALE PRICE (SA c/l) AS FROM 03/10/2018	-	-	1 564.830	1 569.230	1 057.088
SINGLE NATIONAL MAXIMUM RETAIL PRICE	-	-	-	-	1 372.000
BASIC FUEL PRICE - 31/10/2018 (SA c/l)	771.225	760.904	892.359	899.613	888.803
PRESS RELEASE CONTRIBUTION TO BFP 03/10/2018 - 31/10/2018 (SA c/l)	851.170	838.170	891.630	896.030	884.128
UNIT OVER/(UNDER) RECOVERY - 31/10/2018 (SA c/l)	79.945	77.266	(0.729)	(3.583)	(4.675)
AVERAGE BASIC FUEL PRICE 28/09/2018 - 31/10/2018	819.617	807.001	904.335	910.995	900.792
AVERAGE UNIT OVER/(UNDER) RECOVERY 28/09/2018 - 31/10/2018	19.053	18.794	(28.205)	(30.465)	(29.664)

ANALYSIS MOVEMENT OF AVERAGE OVER/(UNDER) RECOVERY

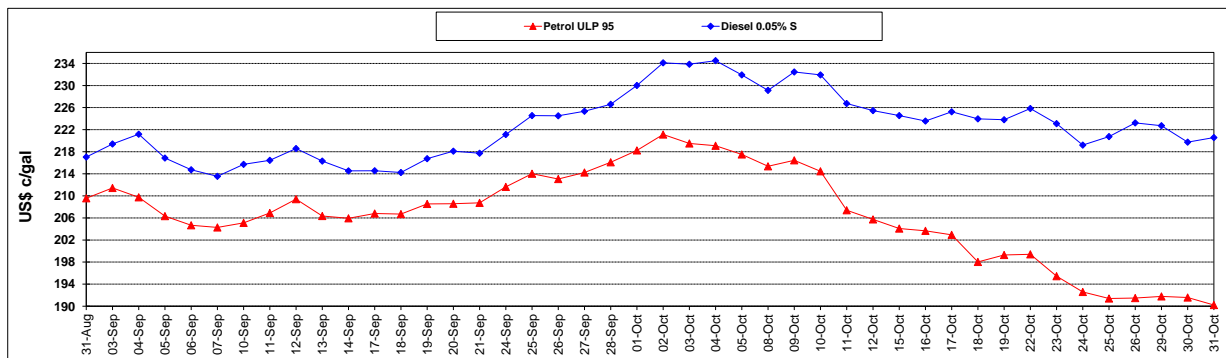
	PETROL 95	PETROL 93	DIESEL 0.05%	DIESEL 0.005%	ILL. PAR.
- MOVEMENT IN INTERNATIONAL PRODUCT PRICES	1.876	1.881	(47.158)	(49.557)	(48.543)
- MOVEMENT IN EXCHANGE RATE	17.177	16.913	18.953	19.092	18.879
AVERAGE UNIT OVER/(UNDER) RECOVERY 28/09/2018 - 31/10/2018	19.053	18.794	(28.205)	(30.465)	(29.664)

R/\$ EXCHANGE RATE - (R/\$14.6595 - 31/10/2018)

EXCHANGE RATE USED IN BASIC FUEL PRICE



INTERNATIONAL PRODUCT PRICES OF BASKET USED IN BASIC FUEL PRICE



BASIC FUEL PRICE IN SA CENTS PER LITRE

