

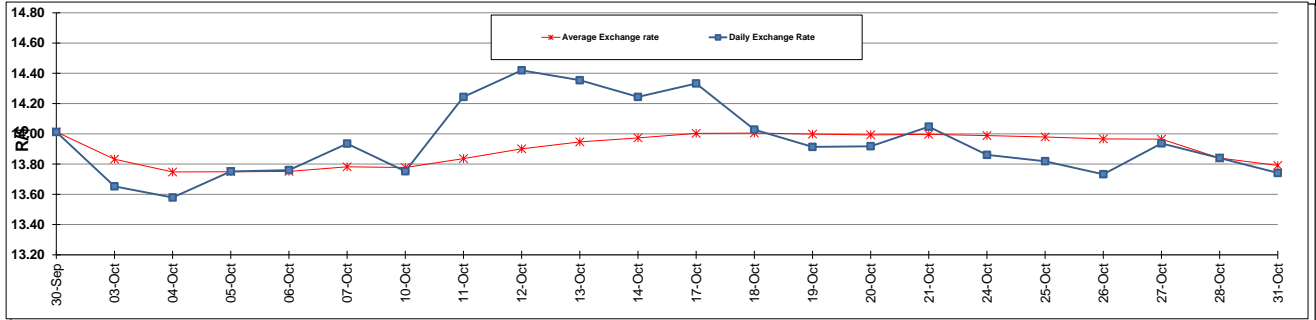
	PETROL 95 ULP	PETROL 93 ULP & LRP	DIESEL 0.05%	DIESEL 0.005%	ILL. PAR.
GAUTENG PUMP PRICE (SA c/l) AS FROM 02/11/2016	1 305.000	1 279.000	-	-	-
WHOLESALE PRICE (SA c/l) AS FROM 02/11/2016	-	-	1 134.870	1 138.270	726.628
SINGLE NATIONAL MAXIMUM RETAIL PRICE	-	-	-	-	934.000
BASIC FUEL PRICE - 31/10/2016 (SA c/l)	551.406	536.522	541.492	545.476	538.580
PRESS RELEASE CONTRIBUTION TO BFP 28/10/2016 - 31/10/2016 (SA c/l)	538.970	522.970	505.630	509.030	508.128
UNIT OVER/(UNDER) RECOVERY (SA c/l) - 31/10/2016	(12.436)	(13.552)	(35.862)	(36.446)	(30.452)
AVERAGE BASIC FUEL PRICE 28/10/2016 - 31/10/2016	563.149	545.961	550.781	555.066	547.153
AVERAGE UNIT OVER/(UNDER) RECOVERY 28/10/2016 - 31/10/2016	(24.179)	(22.991)	(45.151)	(46.036)	(39.025)

### ANALYSIS MOVEMENT OF AVERAGE OVER/(UNDER) RECOVERY

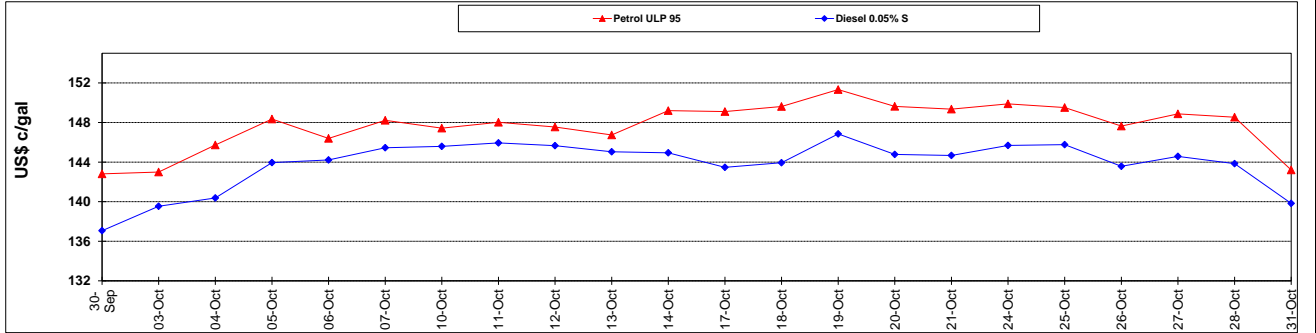
	PETROL 95	PETROL 93	DIESEL 0.05%	DIESEL 0.005%	ILL. PAR.
- MOVEMENT IN INTERNATIONAL PRODUCT PRICES	(31.276)	(29.872)	(52.092)	(53.031)	(45.921)
- MOVEMENT IN EXCHANGE RATE	7.097	6.881	6.941	6.995	6.896
AVERAGE UNIT OVER/(UNDER) RECOVERY 28/10/2016 - 31/10/2016	(24.179)	(22.991)	(45.151)	(46.036)	(39.025)

R/\$ EXCHANGE RATE - (R/\$ 13.7415- 31/10/2016)

### EXCHANGE RATE USED IN BASIC FUEL PRICE



### INTERNATIONAL PRODUCT PRICES OF BASKET USED IN BASIC FUEL PRICE



### BASIC FUEL PRICE IN SA CENTS PER LITRE

