

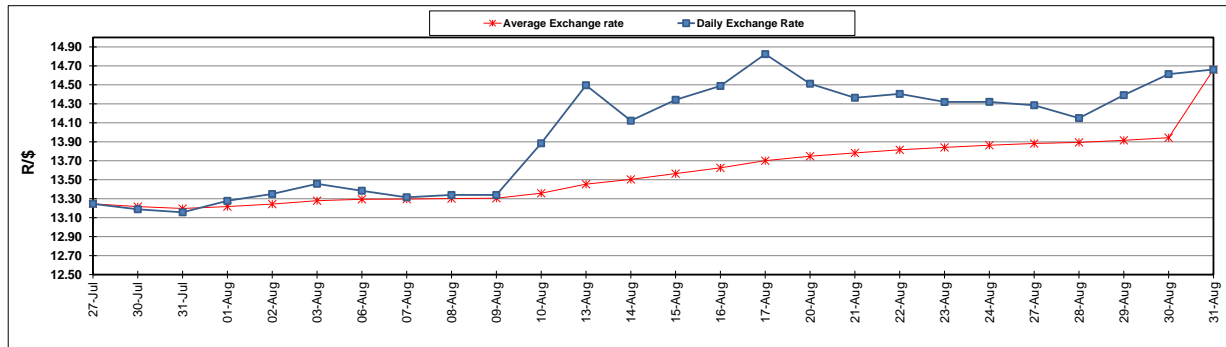
	PETROL 95 ULP	PETROL 93 ULP & LRP	DIESEL 0.05%	DIESEL 0.005%	ILL. PAR.
GAUTENG PUMP PRICE (SA c/l) AS FROM 05/09/2018	1 608.000	1 586.000	-	-	-
WHOLESALE PRICE (SA c/l) AS FROM 05/09/2018	-	-	1 440.830	1 445.230	953.088
SINGLE NATIONAL MAXIMUM RETAIL PRICE	-	-	-	-	1 233.000
BASIC FUEL PRICE - 31/08/2018 (SA c/l)	848.220	834.876	880.392	885.530	870.583
PRESS RELEASE CONTRIBUTION TO BFP 31/08/2018 - 31/08/2018 (SA c/l)	751.070	739.070	767.630	772.030	780.128
UNIT OVER/(UNDER) RECOVERY - 31/08/2018 (SA c/l)	(97.150)	(95.806)	(112.762)	(113.500)	(90.455)
AVERAGE BASIC FUEL PRICE 31/08/2018 - 31/08/2018	848.220	834.876	880.392	885.530	870.583
AVERAGE UNIT OVER/(UNDER) RECOVERY 31/08/2018 - 31/08/2018	(97.150)	(95.806)	(112.762)	(113.500)	(90.455)

### ANALYSIS MOVEMENT OF AVERAGE OVER/(UNDER) RECOVERY

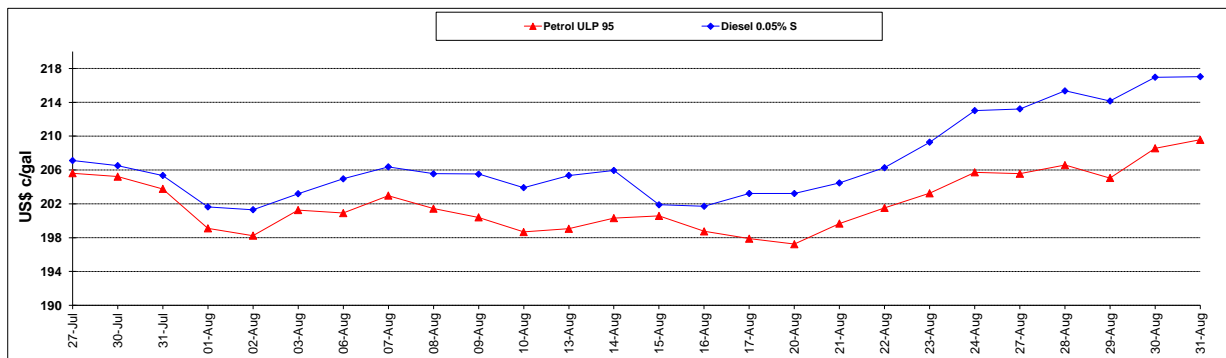
	PETROL 95	PETROL 93	DIESEL 0.05%	DIESEL 0.005%	ILL. PAR.
- MOVEMENT IN INTERNATIONAL PRODUCT PRICES	(55.566)	(54.876)	(69.600)	(70.087)	(47.774)
- MOVEMENT IN EXCHANGE RATE	(41.584)	(40.930)	(43.162)	(43.413)	(42.681)
AVERAGE UNIT OVER/(UNDER) RECOVERY 31/08/2018 - 31/08/2018	(97.150)	(95.806)	(112.762)	(113.500)	(90.455)

### R/\$ EXCHANGE RATE - (R/\$14.6618 - 31/08/2018)

#### EXCHANGE RATE USED IN BASIC FUEL PRICE



#### INTERNATIONAL PRODUCT PRICES OF BASKET USED IN BASIC FUEL PRICE



#### BASIC FUEL PRICE IN SA CENTS PER LITRE

