

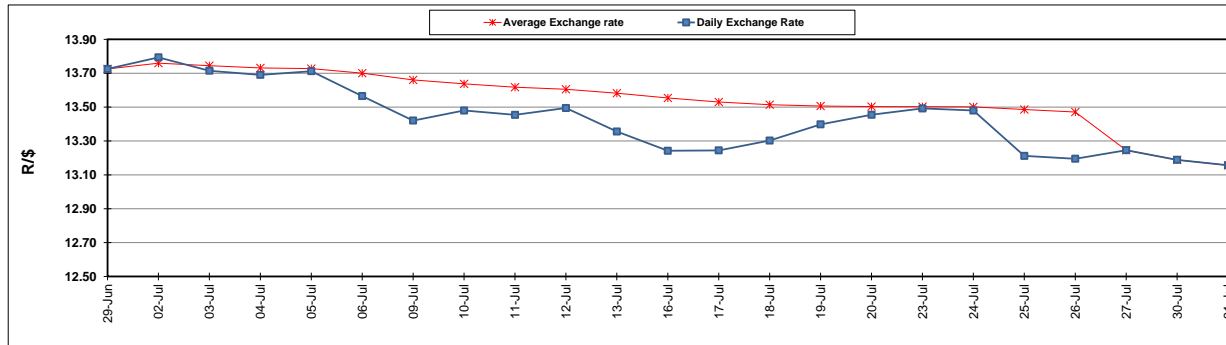
| | PETROL 95 ULP | PETROL 93 ULP & LRP | DIESEL 0.05% | DIESEL 0.005% | ILL. PAR. |
|--|------------------|------------------------|-----------------|------------------|-----------|
| GAUTENG PUMP PRICE (SA c/l) AS FROM 01/08/2018 | 1 603.000 | 1 582.000 | - | - | - |
| WHOLESALE PRICE (SA c/l) AS FROM 01/08/2018 | - | - | 1 440.830 | 1 445.230 | 953.088 |
| SINGLE NATIONAL MAXIMUM RETAIL PRICE | - | - | - | - | 1 233.000 |
| BASIC FUEL PRICE - 31/07/2018 (SA c/l) | 743.081 | 730.949 | 751.478 | 755.543 | 762.002 |
| PRESS RELEASE CONTRIBUTION TO BFP 27/07/2018 - 31/07/2018 (SA c/l) | 750.070 | 738.070 | 771.630 | 776.030 | 776.128 |
| UNIT OVER/(UNDER) RECOVERY - 31/07/2018 (SA c/l) | 6.989 | 7.121 | 20.152 | 20.487 | 14.126 |
| AVERAGE BASIC FUEL PRICE 27/07/2018 - 31/07/2018 | 749.210 | 736.417 | 757.171 | 761.503 | 768.070 |
| AVERAGE UNIT OVER/(UNDER) RECOVERY 27/06/2018 - 31/07/2018 | 0.860 | 1.653 | 14.459 | 14.527 | 8.058 |

ANALYSIS MOVEMENT OF AVERAGE OVER/(UNDER) RECOVERY

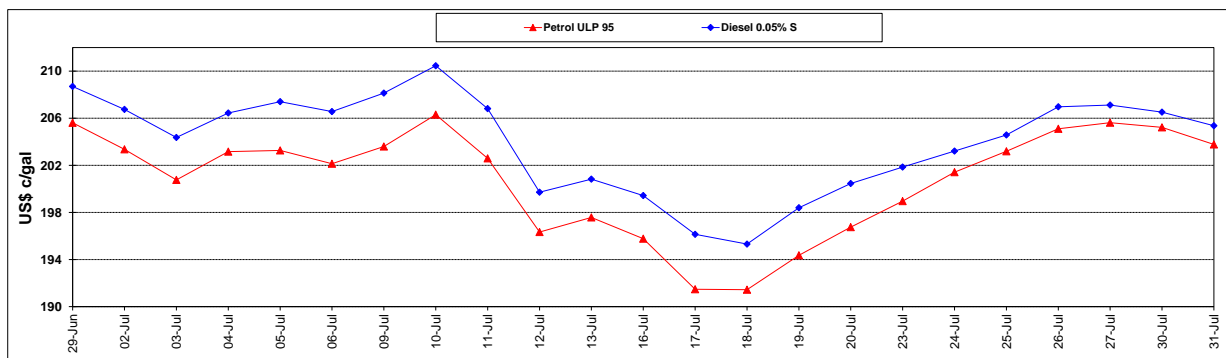
| | PETROL 95 | PETROL 93 | DIESEL 0.05% | DIESEL 0.005% | ILL. PAR. |
|--|-----------|-----------|--------------|---------------|-----------|
| - MOVEMENT IN INTERNATIONAL PRODUCT PRICES | (14.718) | (13.659) | (1.285) | (1.307) | (7.912) |
| - MOVEMENT IN EXCHANGE RATE | 15.578 | 15.312 | 15.744 | 15.834 | 15.970 |
| AVERAGE UNIT OVER/(UNDER) RECOVERY 27/07/2018 - 31/07/2018 | 0.860 | 1.653 | 14.459 | 14.527 | 8.058 |

R/\$ EXCHANGE RATE - (R/\$13.1565 - 31/07/2018)

EXCHANGE RATE USED IN BASIC FUEL PRICE



INTERNATIONAL PRODUCT PRICES OF BASKET USED IN BASIC FUEL PRICE



BASIC FUEL PRICE IN SA CENTS PER LITRE

