

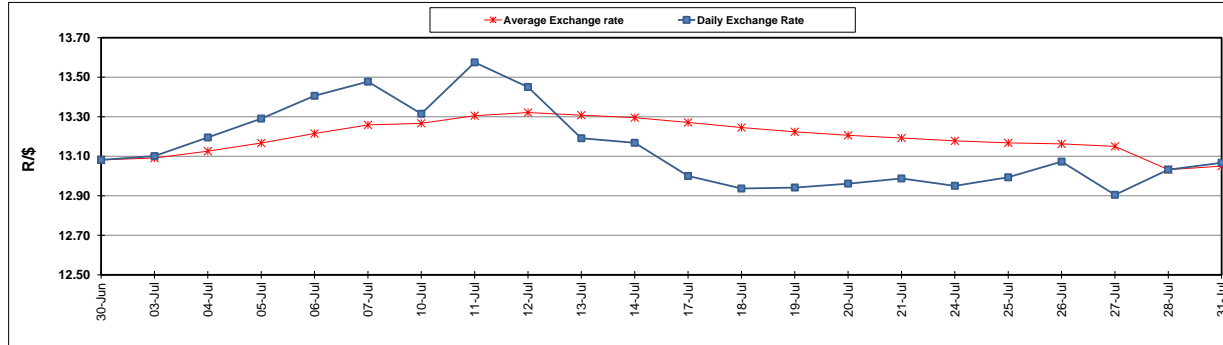
	PETROL 95 ULP	PETROL 93 ULP & LRP	DIESEL 0.05%	DIESEL 0.005%	ILL. PAR.
GAUTENG PUMP PRICE (SA c/l) AS FROM 02/08/2017	1 305.000	1 282.000	-	-	-
WHOLESALE PRICE (SA c/l) AS FROM 02/08/2017	-	-	1 126.330	1 131.730	683.088
SINGLE NATIONAL MAXIMUM RETAIL PRICE	-	-	-	-	876.000
BASIC FUEL PRICE - 31/07/2017 (SA c/l)	570.334	555.246	562.217	568.500	560.153
PRESS RELEASE CONTRIBUTION TO BFP 28/07/2017 - 31/07/2017 (SA c/l)	504.670	491.670	485.630	490.030	486.128
UNIT OVER/(UNDER) RECOVERY (SA c/l) - 31/07/2017	(65.664)	(63.576)	(76.587)	(78.470)	(74.025)
AVERAGE BASIC FUEL PRICE 28/07/2017 - 31/07/2017	566.834	551.957	557.707	564.015	554.566
AVERAGE UNIT OVER/(UNDER) RECOVERY 28/07/2017 - 31/07/2017	(62.164)	(60.287)	(72.077)	(73.985)	(68.438)

ANALYSIS MOVEMENT OF AVERAGE OVER/(UNDER) RECOVERY

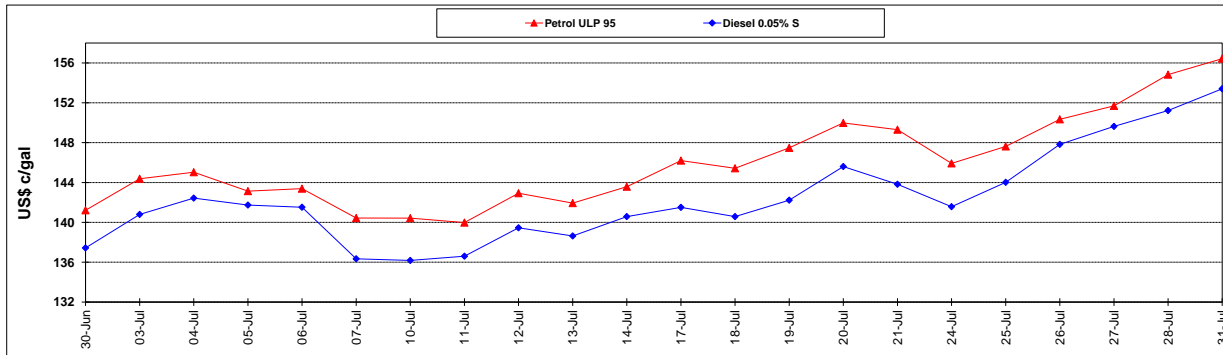
	PETROL 95	PETROL 93	DIESEL 0.05%	DIESEL 0.005%	ILL. PAR.
- MOVEMENT IN INTERNATIONAL PRODUCT PRICES	(66.516)	(64.525)	(76.359)	(78.316)	(72.696)
- MOVEMENT IN EXCHANGE RATE	4.352	4.238	4.282	4.331	4.258
AVERAGE UNIT OVER/(UNDER) RECOVERY 28/07/2017 - 31/07/2017	(62.164)	(60.287)	(72.077)	(73.985)	(68.438)

R/\$ EXCHANGE RATE - (R/\$ 13.0670- 31/07/2017)

EXCHANGE RATE USED IN BASIC FUEL PRICE



INTERNATIONAL PRODUCT PRICES OF BASKET USED IN BASIC FUEL PRICE



BASIC FUEL PRICE IN SA CENTS PER LITRE

