

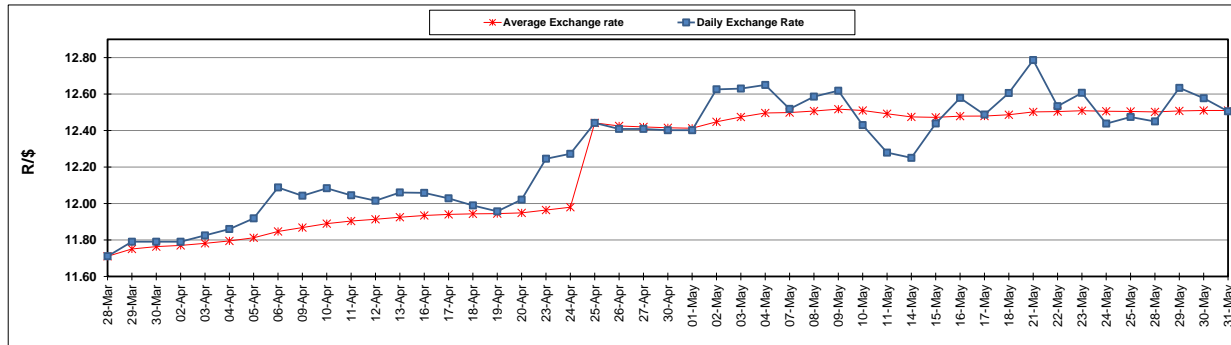
|  | PETROL 95<br>ULP | PETROL 93<br>ULP & LRP | DIESEL<br>0.05% | DIESEL<br>0.005% | ILL. PAR. |
|--|------------------|------------------------|-----------------|------------------|-----------|
| GAUTENG PUMP PRICE (SA c/l) AS FROM 02/05/2018                     | 1 497.000        | 1 472.000              | -               | -                | -         |
| WHOLESALE PRICE (SA c/l) AS FROM 02/05/2018                        | -                | -                      | 1 333.830       | 1 338.230        | 845.088   |
| SINGLE NATIONAL MAXIMUM RETAIL PRICE                               | -                | -                      | -               | -                | 1 089.000 |
| BASIC FUEL PRICE - 31/05/2018 (SA c/l)                             | 724.440          | 712.049                | 743.935         | 749.430          | 746.685   |
| PRESS RELEASE CONTRIBUTION TO BFP 02/05/2018 - 31/05/2018 (SA c/l) | 645.070          | 630.070                | 660.630         | 665.030          | 672.128   |
| UNIT OVER/(UNDER) RECOVERY - 31/05/2018 (SA c/l)                   | (79.370)         | (81.979)               | (83.305)        | (84.400)         | (74.557)  |
| AVERAGE BASIC FUEL PRICE 25/04/2018 - 31/05/2018                   | 718.697          | 706.022                | 735.525         | 741.381          | 744.032   |
| AVERAGE UNIT OVER/(UNDER) RECOVERY 25/04/2018 - 31/05/2018         | (82.701)         | (85.026)               | (85.821)        | (87.092)         | (81.534)  |

### ANALYSIS MOVEMENT OF AVERAGE OVER/(UNDER) RECOVERY

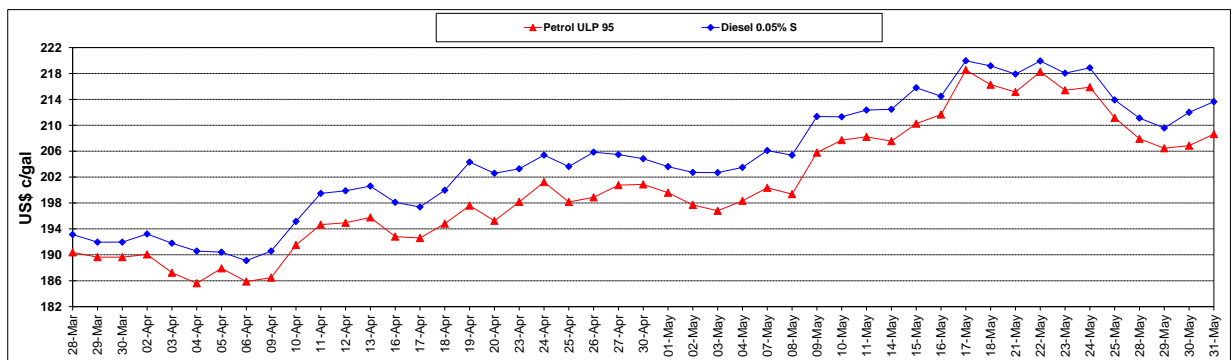
|  | PETROL 95 | PETROL 93 | DIESEL 0.05% | DIESEL 0.005% | ILL. PAR. |
|--|-----------|-----------|--------------|---------------|-----------|
| - MOVEMENT IN INTERNATIONAL PRODUCT PRICES                 | (52.241)  | (55.103)  | (54.648)     | (55.670)      | (50.000)  |
| - MOVEMENT IN EXCHANGE RATE                                | (30.460)  | (29.923)  | (31.173)     | (31.422)      | (31.534)  |
| AVERAGE UNIT OVER/(UNDER) RECOVERY 25/04/2018 - 31/05/2018 | (82.701)  | (85.026)  | (85.821)     | (87.092)      | (81.534)  |

### R/\$ EXCHANGE RATE - (R/\$12.5055 - 31/05/2018)

### EXCHANGE RATE USED IN BASIC FUEL PRICE



### INTERNATIONAL PRODUCT PRICES OF BASKET USED IN BASIC FUEL PRICE



### BASIC FUEL PRICE IN SA CENTS PER LITRE

